

广州诺构舞台设备有限公司

地址：广州市番禺区石基大龙文桥路13号之

电话：139 2648 6862

传真：139 2648 6862

网址：<https://www.nuogoustage.com>

Guangzhou Nuogou Stage Equipment Co.,Ltd

Address: No.109, No.13, Dalongwenqiao Road, Shiji, Panyu District, Guangzhou, China.

Tel: 139 2648 6862

Fax: 139 2648 6862

Website: <https://www.nuogoustage.com>



目录

catalogues

公司介绍 Company Profile	1-2	立柱系统 Column system	67-70
企业文化 corporate culture	3-6	吊挂系统 Suspension systems	71-72
工程案例 Project Cases	7-16	顶棚系统 roof system	73-80
插销式灯光桁架 Pin Lighting Truss	17-42	龙门桁架 gantry truss	81-82
附属品 adjunct	43-46	A 字架 A-frame	83-86
螺丝式灯光桁架 Screw Lighting Lighting Truss	47-62	扬声器音响架 Speaker Sound Stands	84-86
背景小桁架 background truss	63-66	舞台 theatrical	87-100
		定制异形舞台 Customised shaped stages	101-102
		合唱台合影台 Photo booth	103-104

广州市诺构舞台设备有限公司

公司介绍

诺构的核心结构:

诺构舞台设备有限公司核心成员从业舞台结构设计及现场施工长达十几年,在这些年里,一直秉承“安全第一、合理组合产品”为第一要素,为了让广大客户能更合理的选配各种型号的灯光桁架、舞台等舞台结构设备,我们从需求分析、产品、方案等多个角度为客户提供投资建议,充分体现业务及技术方面的“专”、“精”、“细”。以价值的有效传递为基点,快速促进互信合作。而在产品质量的重要环节上诺构人对于原材料的选用上严格按照设计需求进行采购配置,同时核心的铝合金焊接工人均在灯光桁架行业从业10年以上。

诺构的核心价值

诺构舞台设备有限公司一直努力致力成为“直接用户、目标客户的终身服务提供商”因为不能给最终用户提供长期的服务及技术支持,不能算是完整提供了好的产品解决方案,因此“直接用户、目标客户的终身服务提供商”是诺构公司经营的核心内容。我们的方案涵盖前期舞台结构沟通策划设计,技术解决方案、客户发展前瞻性分析考虑、产品的合理选用及产品的后期使用维护建议等方面。

精艺求精

Essence is an attitude

Refinement and refinement

精是一种态度 **Craftsmanship**

匠心制作

www.nuogoustage.com www.gdnuogou.net

Guangzhou Nuogou Stage Equipment Co. Ltd

Company Profile

The core structure of Noochem:

The core members of Nuogou Stage Equipment Co., Ltd. have been engaged in stage structure design and on-site construction for more than ten years, in these years, has been adhering to the "safety first, reasonable combination of products" as the first element, in order to allow customers to more reasonable selection of various types of lighting trusses, stage and other stage structure equipment, we provide customers with investment advice from multiple perspectives such as demand analysis, products, programs, etc., fully reflecting the "specialized", "refined" and "meticulous" in business and technology. Based on the effective transmission of value, we can quickly promote mutual trust and cooperation. In the important link of product quality, the selection of raw materials is strictly in accordance with the design requirements for procurement configuration, and the core aluminum alloy welding workers have been working in the lighting truss industry for more than 10 years.

The core values of Noochem

Noki Stage Equipment Co., Ltd. has been striving to become a "direct user, target customer lifelong service provider" because it can not provide long-term continuous service and technical support to end users, can not be regarded as a complete provision of good products and solutions, so "direct user, target customer lifetime service provider" is the core content of Noki's operation. Our solutions cover early stage structure communication planning and design, technical solutions, customer development forward-looking analysis and consideration, reasonable selection of products and later use and maintenance suggestions of products.





诺构始于2014年8月15日 广州番禺石基

Nuogou began on August 15, 2014 in Panyu, Guangzhou



生产工艺

PRODUCTION PROCESS

<p>原材料</p>  <p>raw materials</p>	<p>原材料检测</p>  <p>Testing material</p>	<p>硬度计</p>  <p>durometer</p>	<p>设计</p>  <p>devise</p>
<p>数控CNC</p>  <p>digital control</p>	<p>铣床</p>  <p>machining center</p>	<p>开料机</p>  <p>open a seam</p>	<p>焊接</p>  <p>soldered</p>
<p>Molding</p>  <p>插销单管成型</p>	<p>offerings</p>  <p>四方架成型</p>	<p>Load-bearing test</p>  <p>载重测试</p>	<p>TUV Inspection</p>  <p>TUV检测</p>

办公室文化与工厂生产

Office Culture and Factory Production



办公室文化与工厂

Office Culture and Factory Production

精艺求精
Refinement and refinement

Essence is an attitude
精是一种态度

Craftsmanship
匠心制作



工程案例 Engineering Cases

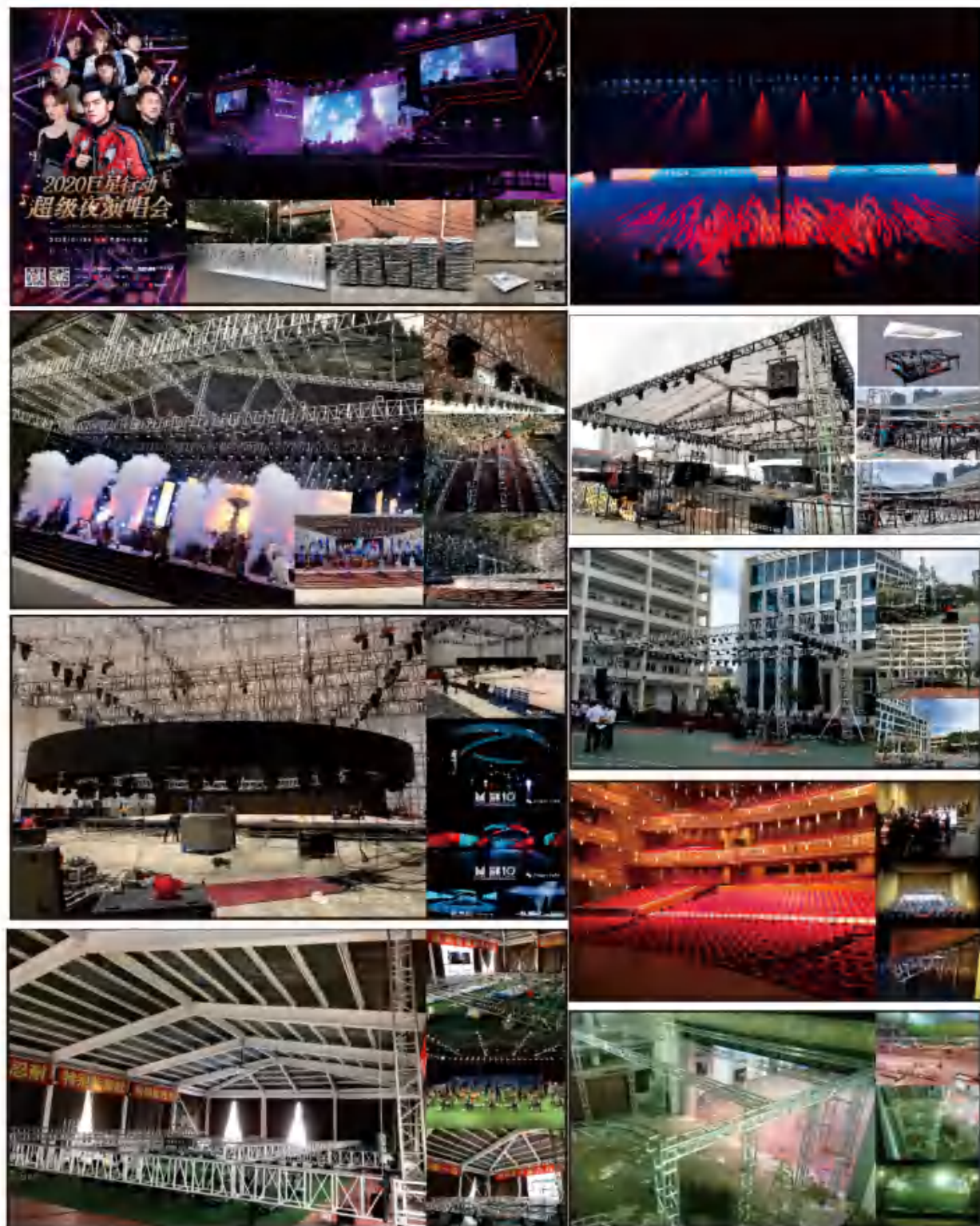


工程案例 Engineering Cases

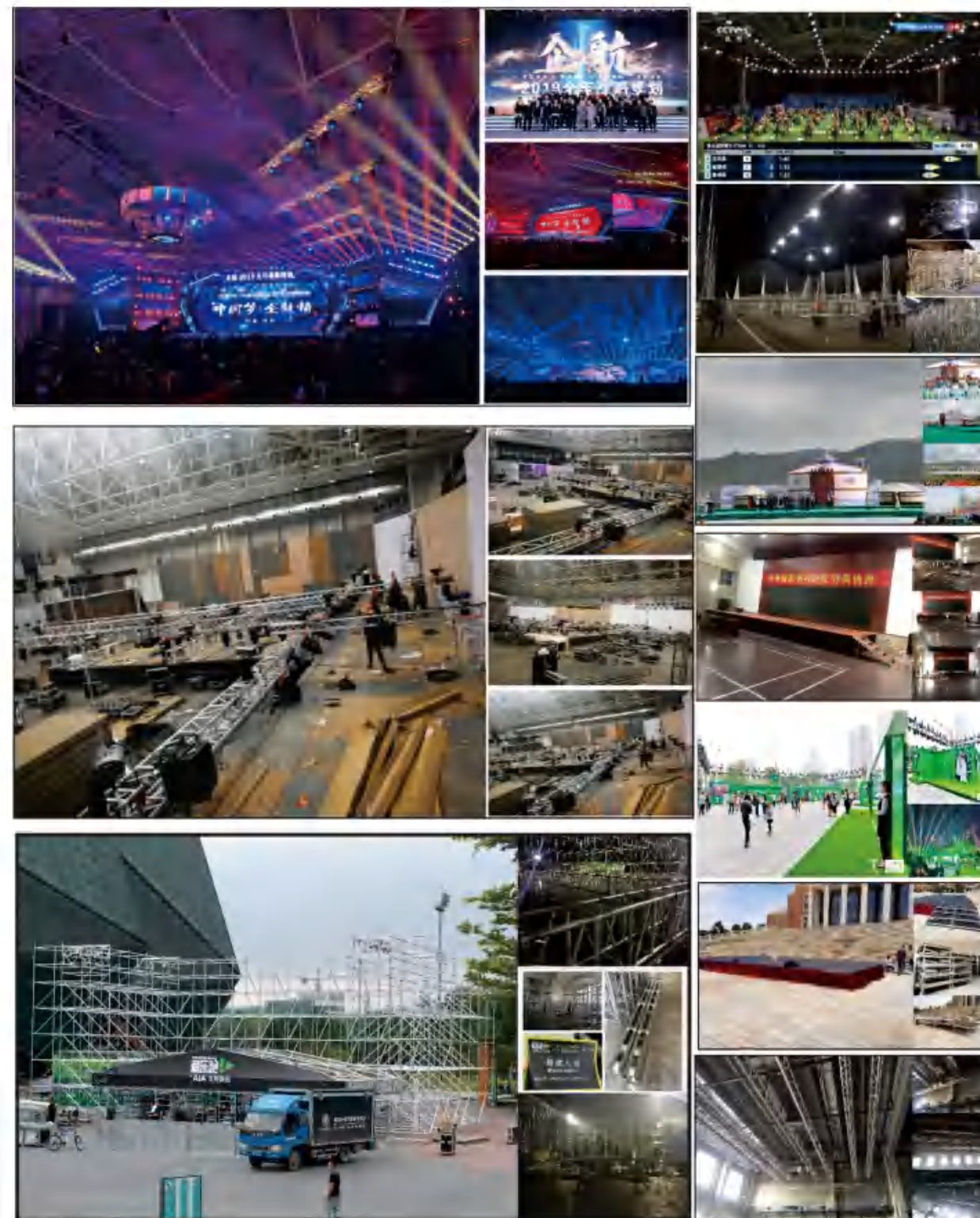




工程案例 Engineering Cases



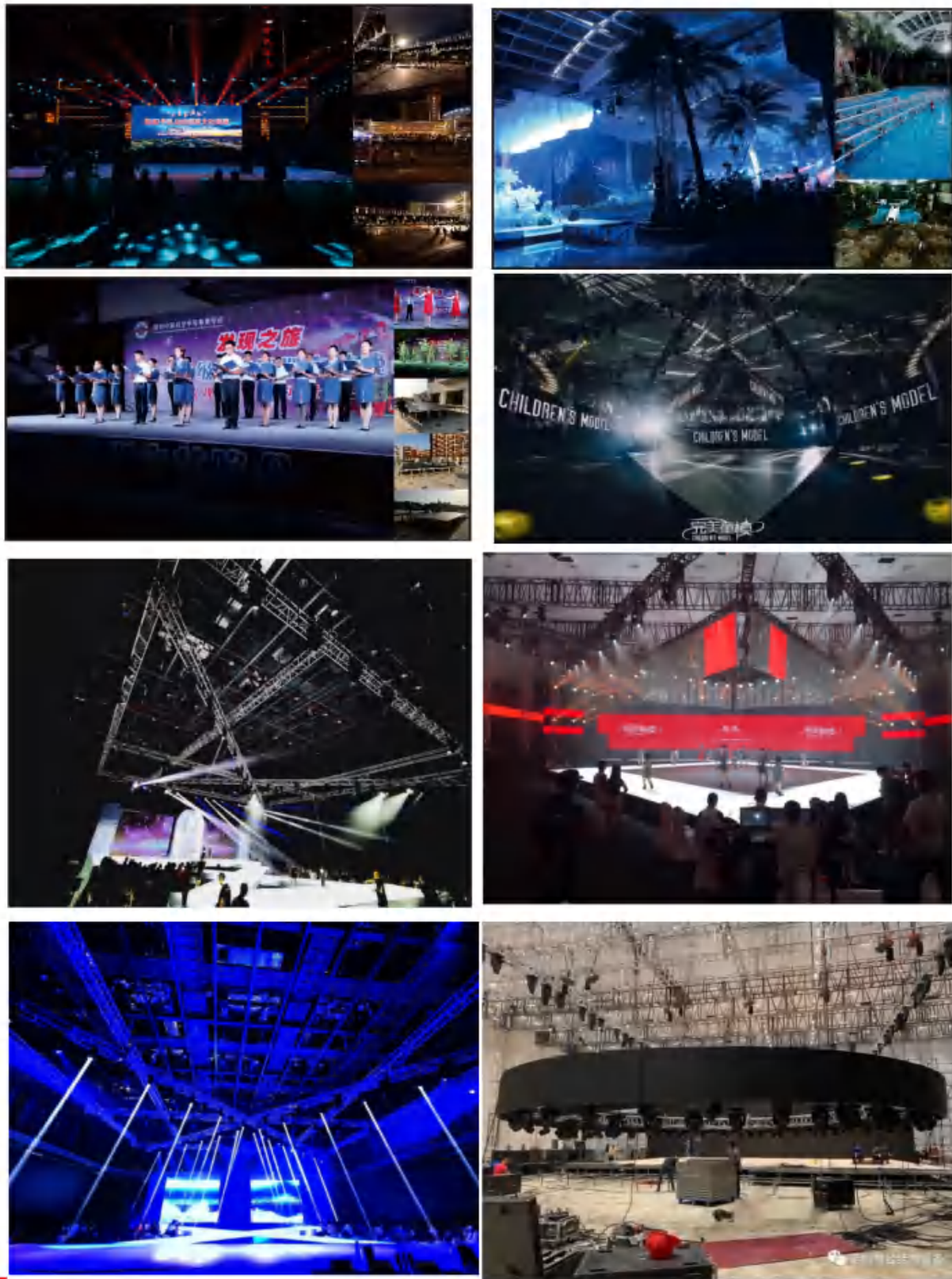
工程案例 Engineering Cases



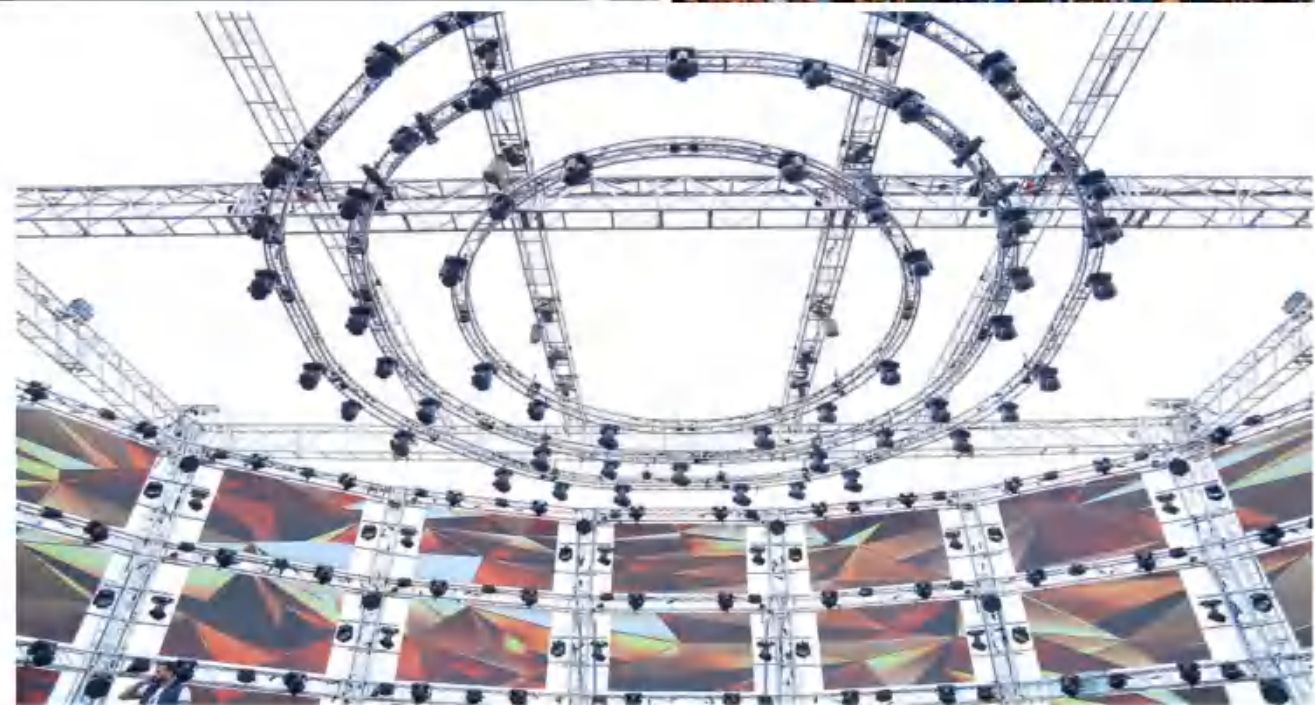
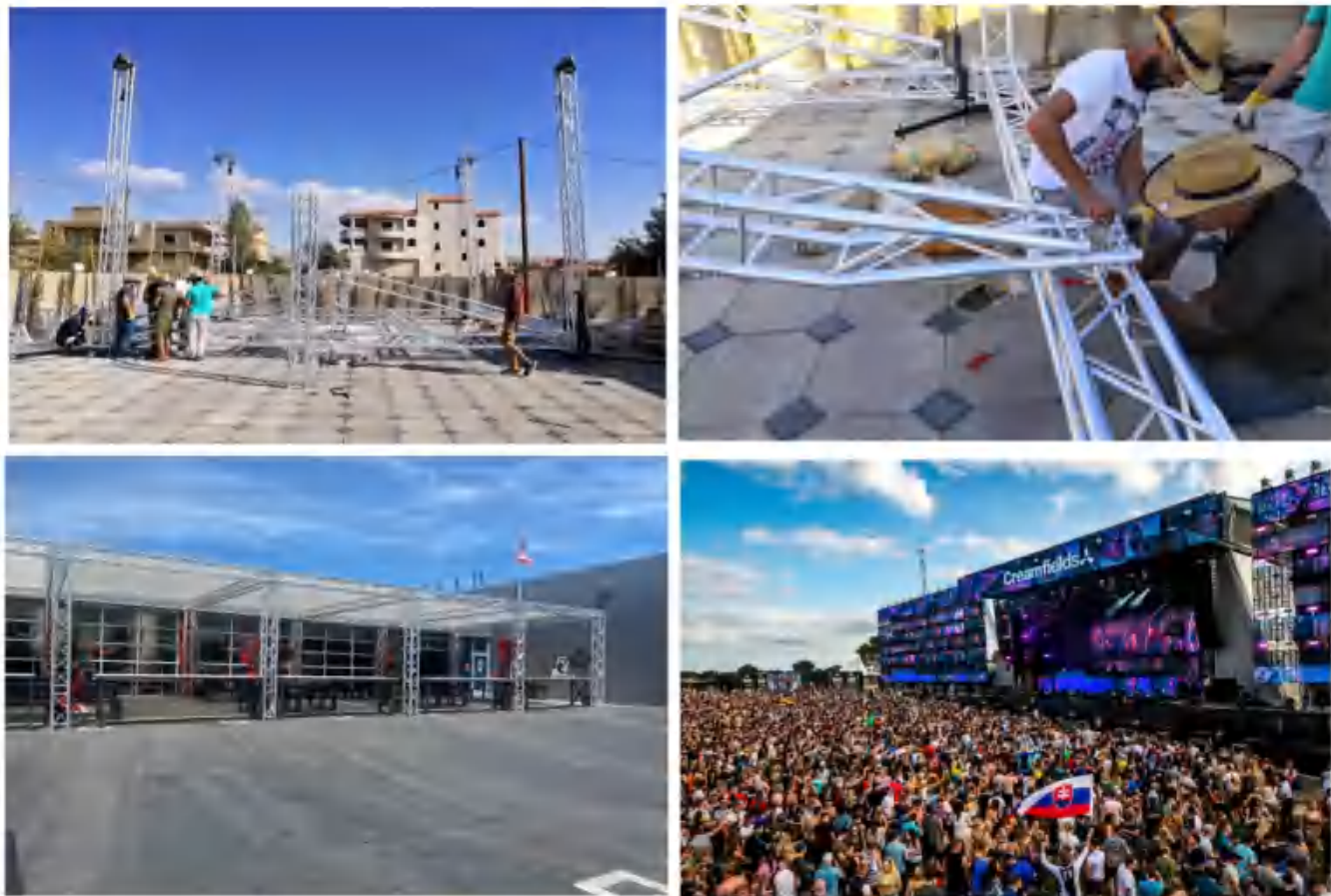


工程案例 Engineering Cases

工程案例 Engineering Cases



工程案例 Engineering Cases

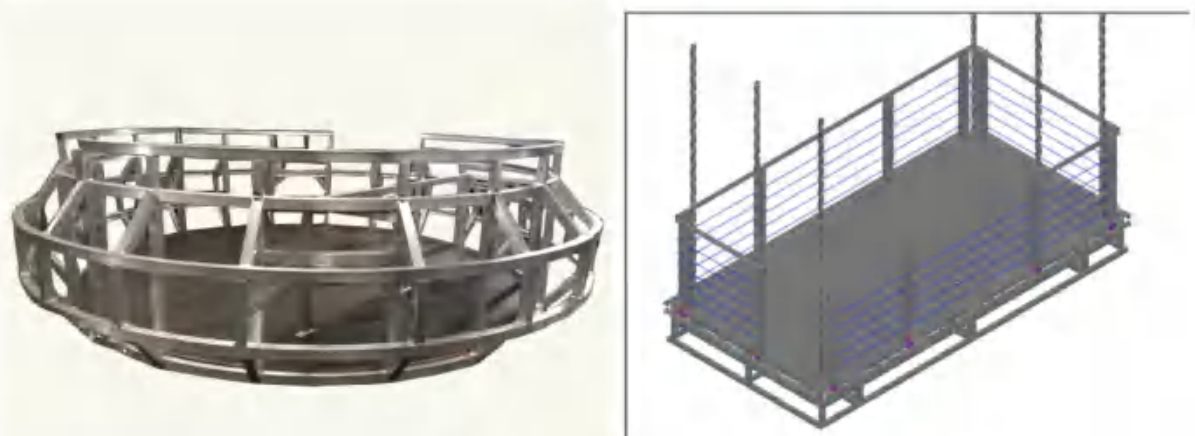
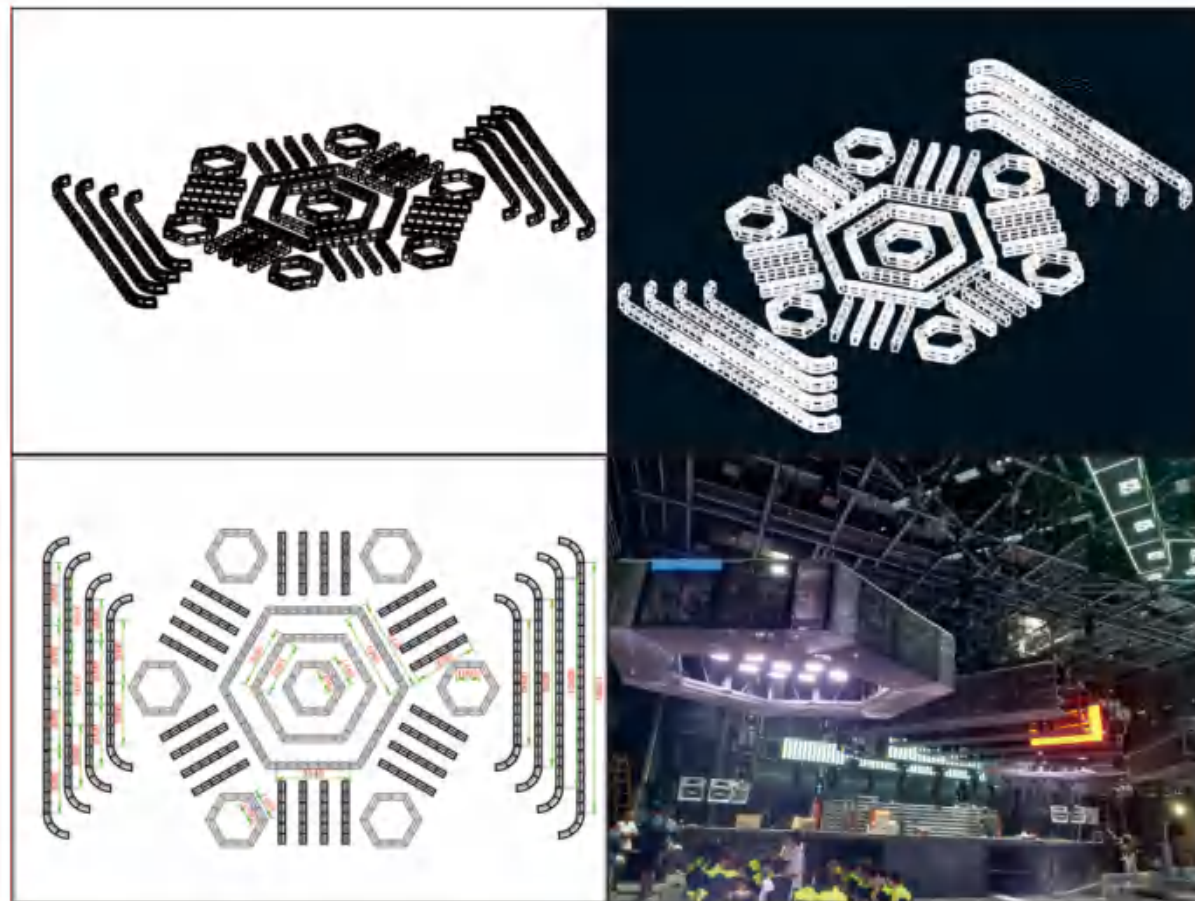


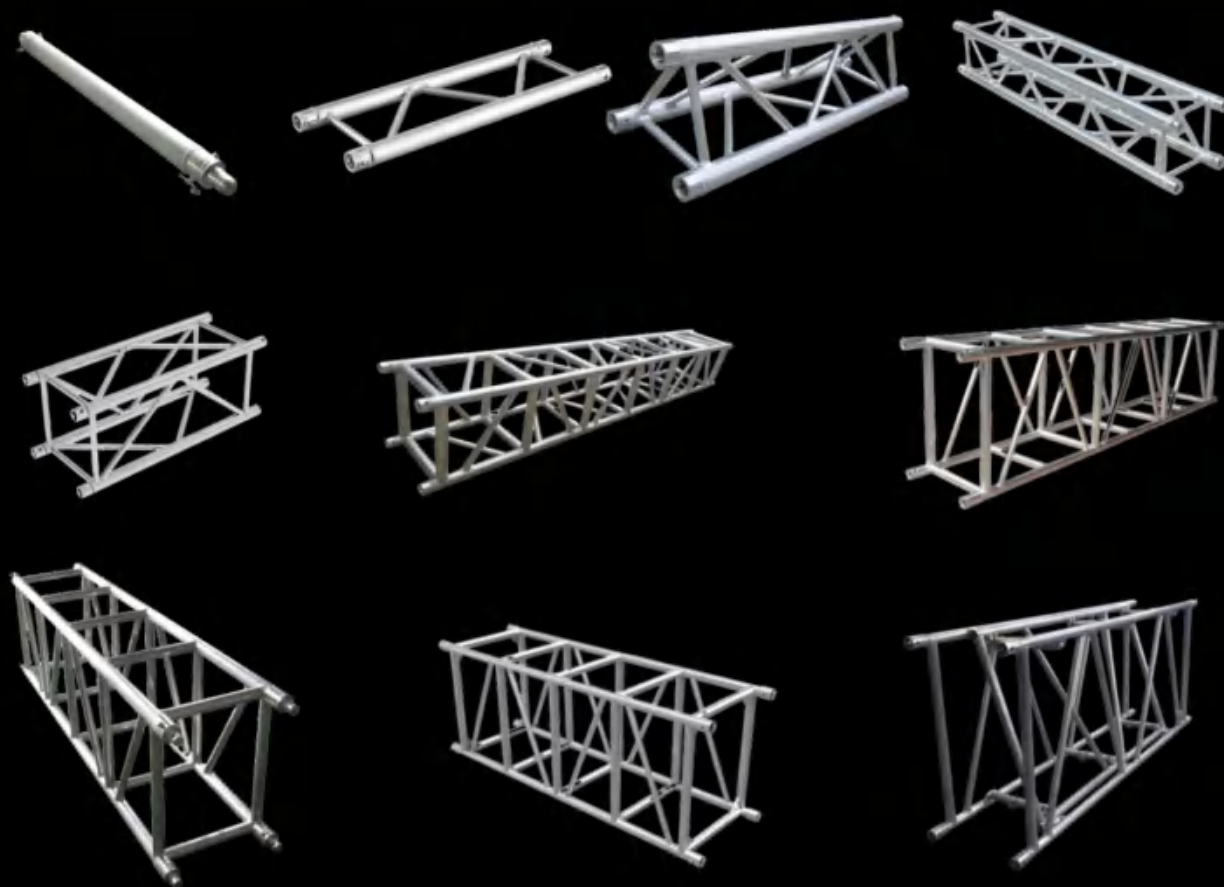
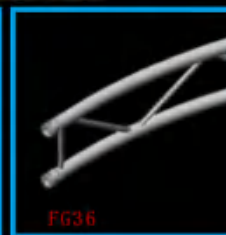
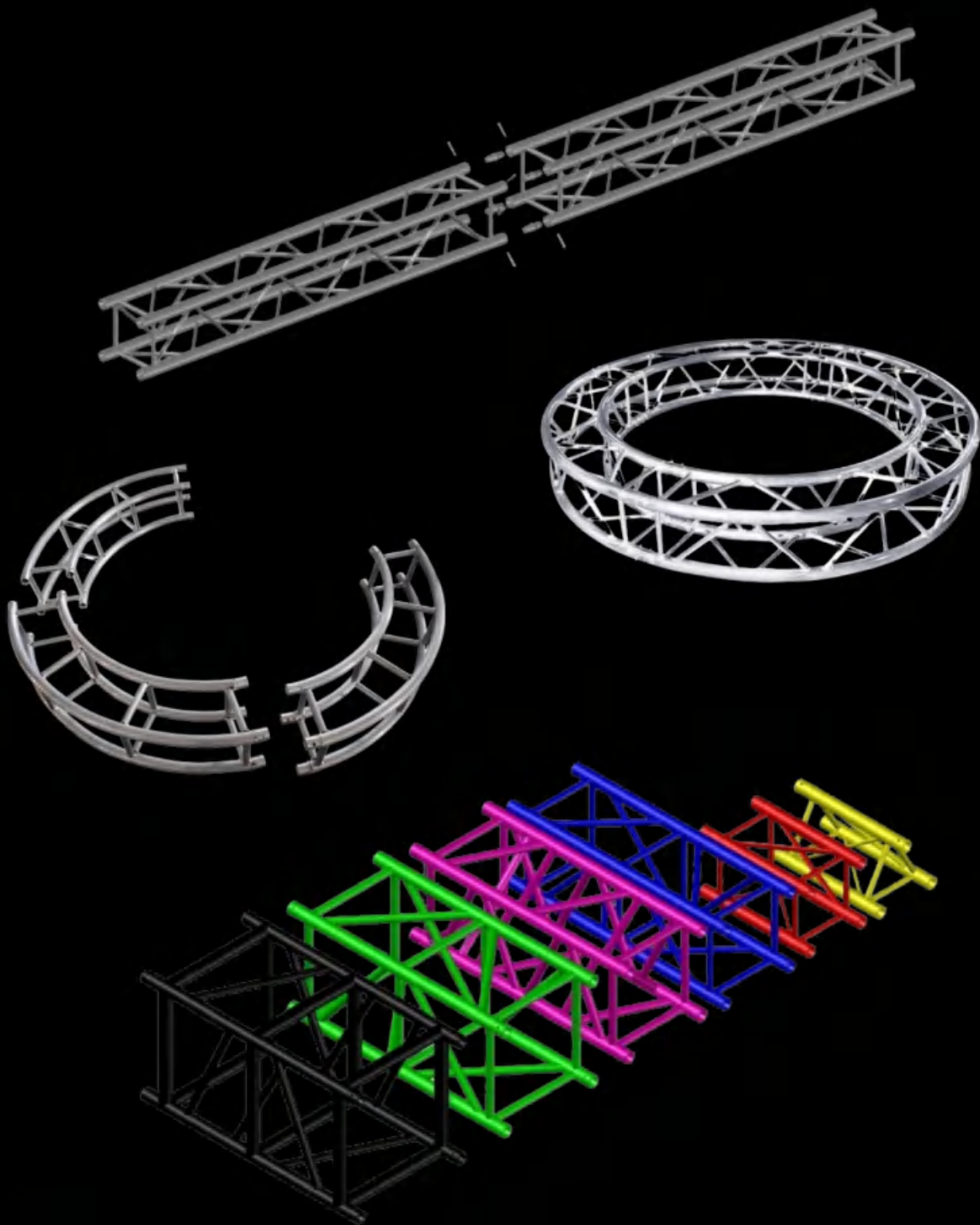
工程案例 Engineering Cases



工程案例 Engineering Cases

工程案例 Engineering Cases







F34架系列是一个单点系统，用于低负荷的柔性支撑。它可以根据需要与F34系统的其他桁架配合使用，其主要应用是展览架50(48)x2(3)毫米的主管由铝制成。架对象与包括的圆锥体连接。

The F34 truss series is a 1-point system and is used as flexible support for low loads. It can be used with other truss from the F34 system as needed and its main application is exhibition stands. The 50 (48) x 2 (3) mm main tube is made of aluminum. The truss

FG34



FG35系列展示架重量轻，体积小适用于顶棚支撑架，展览吊装灯光架，表面可以做烤漆，阳极处理。

FG35series display rack is light in weight and small in size, suitable for ceiling support frame, exhibition hoisting light stand, surface can be painted, anodic treatment.

FG35



FG36系列单排弧形架，可做各种造型，婚庆花栏，圆架，各种简易造型，表面可以做烤漆，阳极处理。

FG36 series single-row arc frame, can do a variety of shapes, wedding flower bars, round frames, all kinds of simple shapes, the surface can be done Lacquered, anodized.

FG36



FG37系列三角型插销桁架，轻型结构，适用与固定安装，剧院，酒店展会学校教堂吊装，支持各种尺寸定制，圆形 椭圆，表面可以做烤漆，阳极处理。

FG37 Series Triangular Bolt Truss, Light Construction, Suitable for Fixed Installation, Theater, Hotel Exhibition School church hoisting, support various sizes of customization, round oval, the surface can be baked paint, anodizing.

FG37



FG38系列四方型插销桁架，中大型活动通用桁架，规格有300*300 400*400 450*450 500*500 400*600 500*600 520*760 600*760 600*800 600*1200支持各种尺寸定制及代工生产。

FG38 series square bolt truss, medium and large activity general truss, specification 300*300 400*400 450*450 500*500 400*600 500*600 520*760 600*760 600*800 600*1200 Support various sizes of customization and OEM production.

FG38

Truss Pipe 桁架管

桁架管铝架管有多种长度可供选择，这种桁架管是伟大的T型杆，夹具支持和旗帜的立场使用。

Truss Tube Aluminum Frame Tube is available in a variety of lengths and this truss tube is great for use with T-bars, clamp supports and flag stands.



桁架图腾是一个专业的高科技设计的直立显示结构，易于设置，建造坚固，不需要额外的支持。根据您的需要，在架框架内或外放置照明。与桁架盖一起使用，创造一个引人注目的，显著的照明显示，将离开你的人群敬畏！架图腾甚至可以用于安装视频屏幕使用在本育活动酒吧和更多。架图腾适用于夜总会、酒吧、酒店、婚礼/正式活动和餐厅。特点包括：工业级桁架和坚固的底板，提供最佳的支撑。

Truss totem is a professional high tech design upright display structure which is easy to set up, built rock solid requires simply no additional support. Place lighting inside or outside the truss framework according to your need. Use in conjunction with truss covers to create an eye catching, remarkable lighting display that will leave crowd in awe! Truss totems can even be used for mounting video screens used in sports activities bars and more. Truss totems are suitable for night clubs, bars, hotels, wedding/formal events and restaurants. Features include: Industrial grade trussing and sturdy base plate for optimum support.



> 销钉单排架 pin single row rack



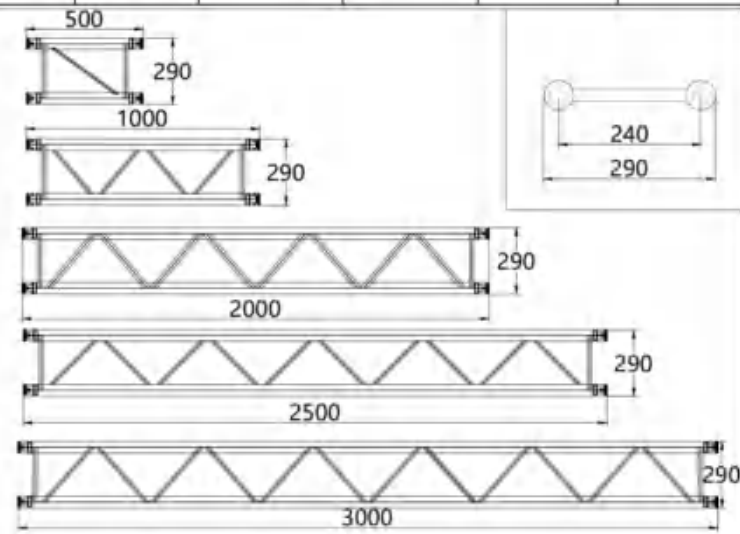
材质: 铝合金6082 Alloy Material: 6082
 连接配件: 直径35MM铝抽心 Connectors: 35mm Conical Coupler
 端口规格: 290单排架 Size: 290 single rack
 端口: 直径50MM铝驳接头 ConnectEnd: 50mm aluminum splicing
 主管: 50*3MM铝管 Tube Main tube: 50x3mm
 竖管: 30*2MM铝管 Brace tube: 20x2mm
 最大安全受力跨度12M*17KG/M Max Load /Span: 12m-17kg/m
 桁架重量: 4.5KG/M Self weight: 4.5KG/M

通过我们大量的扁平桁架、方形桁架、箱形桁架、三角形桁架、工字钢桁架、贸易展览展示桁架、铝桁架、舞台灯光桁架 铝方形桁架、桁架角、桁架接头、角连接、圆弧桁架、十字桁架、铝圆桁架、模块化铝桁架系统、舞台桁架、DJ桁架、DJ灯光桁架, 实现每场演出的专业外观!
 Set the stage for your special events with our large selection of Flat Truss, Square Truss, Box Truss, Triangular Truss, I-Beam Truss, Trade Show Display Truss, Aluminum Truss, Stage Lighting Truss, Aluminum Square Truss, Truss Corner, Truss Joint, Corner Junctions, Circular Arcs Truss, Cross Truss, Aluminum Circular Truss, Modular Aluminum Truss Systems, Stage Truss, DJ Truss, DJ Lighting Truss, and achieve a professional look at every show!

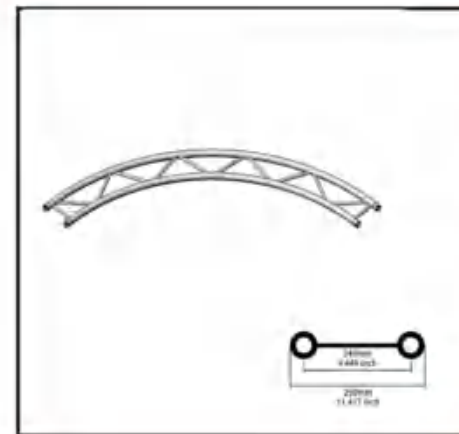
Span(m) 跨度 (m)	2m	4m	6m	8m	10m	12m
Distrib. Load(kg/m) 分配负载	673	166	76	43	27	18
Deflection(mm) 挠度	2.3	9.3	21.9	39.8	63.7	94
Point Load(kg)点载荷	673	333	228	170	135	110
Deflection(mm) 挠度	1.9	7.4	17.6	32.3	52.5	77.7

CODE LENGTH

- FG35-TR01 1.64ft/0.5m
- FG35-TR02 3.28ft/1m
- FG35-TR03 4.92ft/1.5m
- FG35-TR04 6.56ft/2m
- FG35-TR05 8.20ft/2.5m
- FG35-TR06 9.84ft/3m
- FG35-TR07 11.48ft/3.5m
- FG35-TR02 13.12ft/4m
- FG35-TR03 14.76ft/4.5m
- FG35-TR04 16.40ft/5m
- FG35-TR02 18.04ft/5.5m



> 平行弧形桁架-Planar arc truss



材质: 铝合金6082 Alloy Material: 6082
 连接配件: 直径35MM铝抽心 Connectors: 35mm Conical Coupler
 端口规格: 290单排架 Size: 290*290mm Set the stage
 端口: 直径50MM铝驳接头 ConnectEnd: 50mm aluminum splicing
 主管: 50*3MM铝管 Tube Main tube: 50x3mm
 竖管: 20*2MM铝管 Brace tube: 20x2mm
 最大负载/跨度: 17KG*12M Max Load /Span: 12m-17kg/m
 桁架重量: 4.5KG/M Self weight: 4.5KG/M

为您的特殊活动搭建舞台, 我们有大量的平面架, 方形架, 箱形架, 三角形架, 工字梁桁架, 贸易展展示架, 铝合金钢架, 舞台灯光钢架, 铝合金方形钢架钢架转角, 钢架接头, 转角接头, 圆弧钢架, 十字钢架, 铝合金圆钢架, 模块化铝合金钢架系统, 舞台钢架, DJ钢架, DJ灯光钢架, 实现专业化看每一场

Set the stage for your special events with our large selection of Flat Truss, Square Truss, Box Truss, Triangular Truss, I-Beam Truss, Trade Show Display Truss, Aluminum Truss, Stage Lighting Truss, Aluminum Square Truss, Truss Corner, Truss Joint, Corner Junctions, Circular Arcs Truss, Cross Truss, Aluminum Circular Truss, Modular Aluminum Truss Systems, Stage Truss, DJ Truss, DJ Lighting Truss, and achieve a professional look at every show!



F36梯形桁架, 用于垂直和水平钻机的桁架, 该系统通过一个特殊的圆锥形连接器系统连接, 通过铜锤连接在一起形成一个完整的形式, 创造最佳的牵引力。与无公差的圆锥形连接系统一起, 直杆单元可以完美地使用承受弯曲应力的跨度。

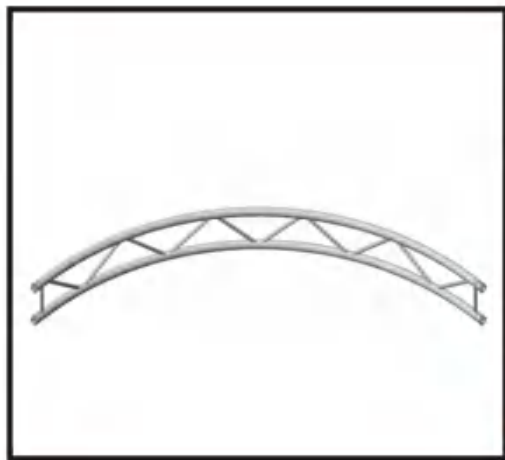
与FG36Truss相结合, 它们具有广泛的应用范围。
 The FG36 Ladder truss, a truss for vertical and horizontal rigs. This system is connected via a special conical

connector system, which is joined together to a complete form by means of a copper hammer, creating optimal traction. Together with the Tolerance free conical connector system the straight elements lend themselves perfectly to use a span exposed to bending stress

Combined with FG36 Truss they possess a broad range of applications.



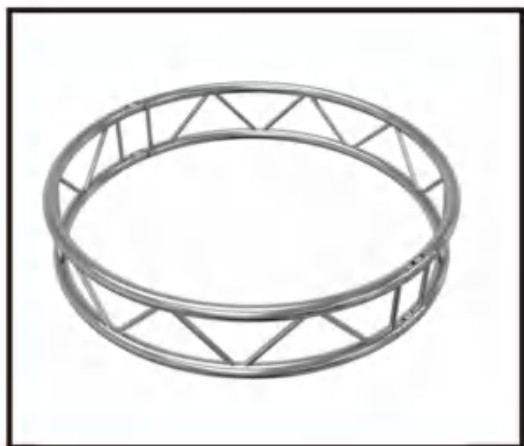
Vertical curved trusses



材质: 铝合金6082	Alloy Material: 6082
连接配件: 直径35MM铝抽心	Connectors: 35mm Conical Coupler
端口规格: 290单排架	Size: 290*290mm Set the stage
端口: 直径50MM铝驳接头	ConnectEnd : 50mm aluminum splicing
主管: 50*3MM铝管	Tube Main tube: 50x3mm
竖管: 20*2MM铝管	Brace tube: 20x2mm
最大负载/跨度: 17KG*12M	Max Load /Span: 12m-17kg/m
桁架重量: 4.5KG/M	Self weight: 4.5KG/M



垂直圆: 2 x 180度圆弧
 产品尺寸: 直径4.92英尺11 7/16英寸 (290mm)
 全宽2英寸 (50mm) 外径管
 3/4 (20mm) 斜撑0.08英寸 (2mm) 壁厚
 SUNIT重量24磅。
 结构: 铝



Vertical Circle: 2 x 180 DEGREE ARCS
 Product Dimensions: 4.92 ft Diameter
 11 7/16" (290mm) OVERALL WIDTH
 2" (50mm) OUTER DIAMETER TUBING
 3/4" (20mm) DIAGONAL BRACING
 0.08" (2mm) WALL THICKNESS
 UNIT WEIGHT 24 lbs.
 Construction: Aluminum

FG35-1-v 2向45度角垂直 2-way 45° corner vertical	FG35-1-H 2向45度角水平 2-way 45° corner horizontal	FG35-2-H 2向60°角水平 2-way 60° corner horizontal	FG35-2-V 2向60°角垂直 2-way 60° corner vertical
FG35-3-H 2向90°角水平 2-way 90° corner horizontal	FG35-3-V 2向90°角垂直 2-way 90° corner vertical	FG35-4-V 2向120°水平 2-way 120° corner horizontal	FG35-4-H 2向120°角垂直 2-way 120° corner vertical
FG35-5-H 2向135°角垂直 2-way 135° corner vertical	FG35-5-V 2向135°角水平 2-way 135° corner horizontal	FG35-6-H 3向90°角水平 3-way 90° corner horizontal	FG35-6-V 3向120°角垂直 3-way 90° corner vertical
FG35-7-H 3向T型角水平 3-way horizontal T-junction	FG-357-V 3向垂直T型 3-way vertical T-junction	FG35-7-H 4向水平交叉型 4-way horizontal cross junction	FG358-V 4向十字交叉型 4-way horizontal cross junction
FG35-8-H 4向水平T型 4-way horizontal T-junction	FG35-9-V 四向90°转角水平 4-way 90° corner horizontal	FG35-10-V 三向90°转角垂直 2-way 90° corner vertical	FG35-10-H 4向90°转角垂直 4-way 90° corner vertical
FG001 铝套筒 Aluminum sleeve	FG002 铝抽心 Aluminum core pulling	FG003 铁插销+保险扣 Iron bolt+safety buckle	FG004 铁半抽 Iron half extraction

> FG290V插销三角架 - 290*290mm triangle

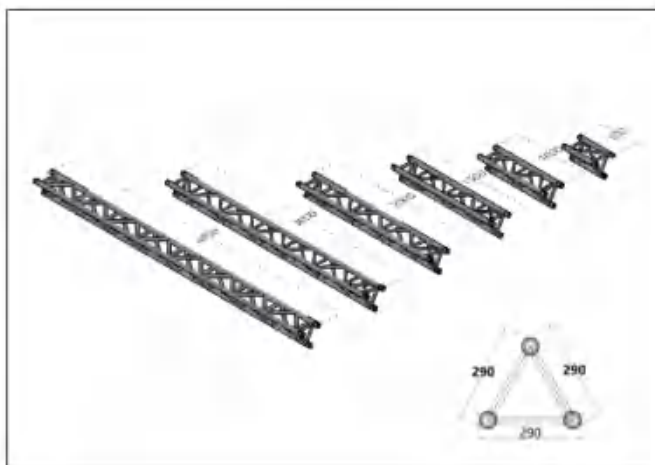


材质: 铝合金6082	Alloy Material: 6082
连接配件: 直径35MM铝抽心	Connectors: 35mm Conical Coupler
端口规格: 290*290三角架	Size: 290*290mm triangle
端口: 直径50MM铝驳接头	ConnectEnd : 50mmaluminum splicing
主管: 50*3MM铝管	TubeMain tube: 50x3mm
竖管: 20*2MM铝管	Brace tube: 20x2mm
最大负载/跨度: 17KG*12M	Max Load /Span: 12m-17kg/m
桁架重量: 6.5KG/M	Self weight: 6.5KG/M

TUV CE I9001 FG290V插销三角架 - 290*290mm triangle								
length		total load	Load per meter	1点	2点	3点	4点	sink
(M)	(ft)	(KG)	(KG)	(KG)	(KG)	(KG)	(KG)	(mm)
4.0	13.1	683.8	170.9	341.9	256.4	170.9	142.1	9
5.0	16.4	546.7	109.3	273.4	205.0	136.6	113.6	16
6.0	19.7	457.4	76.2	228.7	171.5	114.3	95.2	27
7.0	23	388.1	55.4	194.0	145.5	97.0	80.6	37
8.0	26.2	338.8	42.4	169.4	127.1	84.7	70.5	49
9.0	29.5	298.0	33.1	149.4	112.0	74.7	62.0	61
10.0	32.8	269.5	27.0	134.8	101.1	67.3	56.0	78
11.0	36	245.6	22.3	123.2	92.4	61.6	51.3	95
12.0	39.2	221.8	18.5	110.9	83.2	55.4	46.1	113

CODE LENGTH

- FG37-TR01 1.64ft/0.5m
- FG37-TR02 3.28ft/1m
- FG37-TR03 4.92ft/1.5m
- FG37-TR04 6.56ft/2m
- FG37-TR05 8.20ft/2.5m
- FG37-TR06 9.84/3m
- FG37-TR07 11.48ft/3.5m
- FG37-TR02 13.12ft/4m
- FG37-TR03 14.76ft/4.5m
- FG37-TR04 16.40ft/5m
- FG37-TR02 16.5ft/5.5m
- FG37-TR08 19.68ft/6m



> FG390V插销三角架 - 390*390mm triangle



材质: 铝合金6082	Alloy Material: 6082
连接配件: 直径35MM铝抽心	Connectors: 35mm Conical Coupler
端口规格: 390*390三角架	Size: 390*390mm triangle
端口: 直径50MM铝驳接头	ConnectEnd : 50mmaluminum splicing
主管: 50*3MM铝管	TubeMain tube: 50x3mm
竖管: 20*2MM铝管	Brace tube: 20x2mm
最大载重: 37KG*12M	Max Load /Span: 12m-37kg/m
桁架重量: 7.5KG/M	Self weight: 7.5KG/M

三角架型桁架属于室内桁架, 利用于三角型稳固, 坚定, 耐压的特点, 具有外形美观, 体积小, 室内安装方便等优点。

材料采用优质国标铝型材, 适用于各种大小型, 商场, 酒店, 聚餐, 商业展会, 室外篷房等活动, 不同规格尺寸可根据客户要求定制。

Triangle truss is an indoor truss that utilizes the characteristics of stability, firmness, and pressure resistance of the triangle. It has the advantages of beautiful appearance, small size, and convenient indoor installation.

Triangle truss is an indoor truss that utilizes the characteristics of stability, firmness, and pressure resistance of the triangle. It has the advantages of beautiful appearance, small size, and convenient indoor installation. The material adopts high-quality national standard aluminum profiles, suitable for various sizes, shopping malls, hotels, gatherings, commercial exhibitions, outdoor tents and other activities. Different specifications and sizes can be customized according to customer requirements.

TUV CE I9001 FG390V插销三角架 - 390*390mm triangle

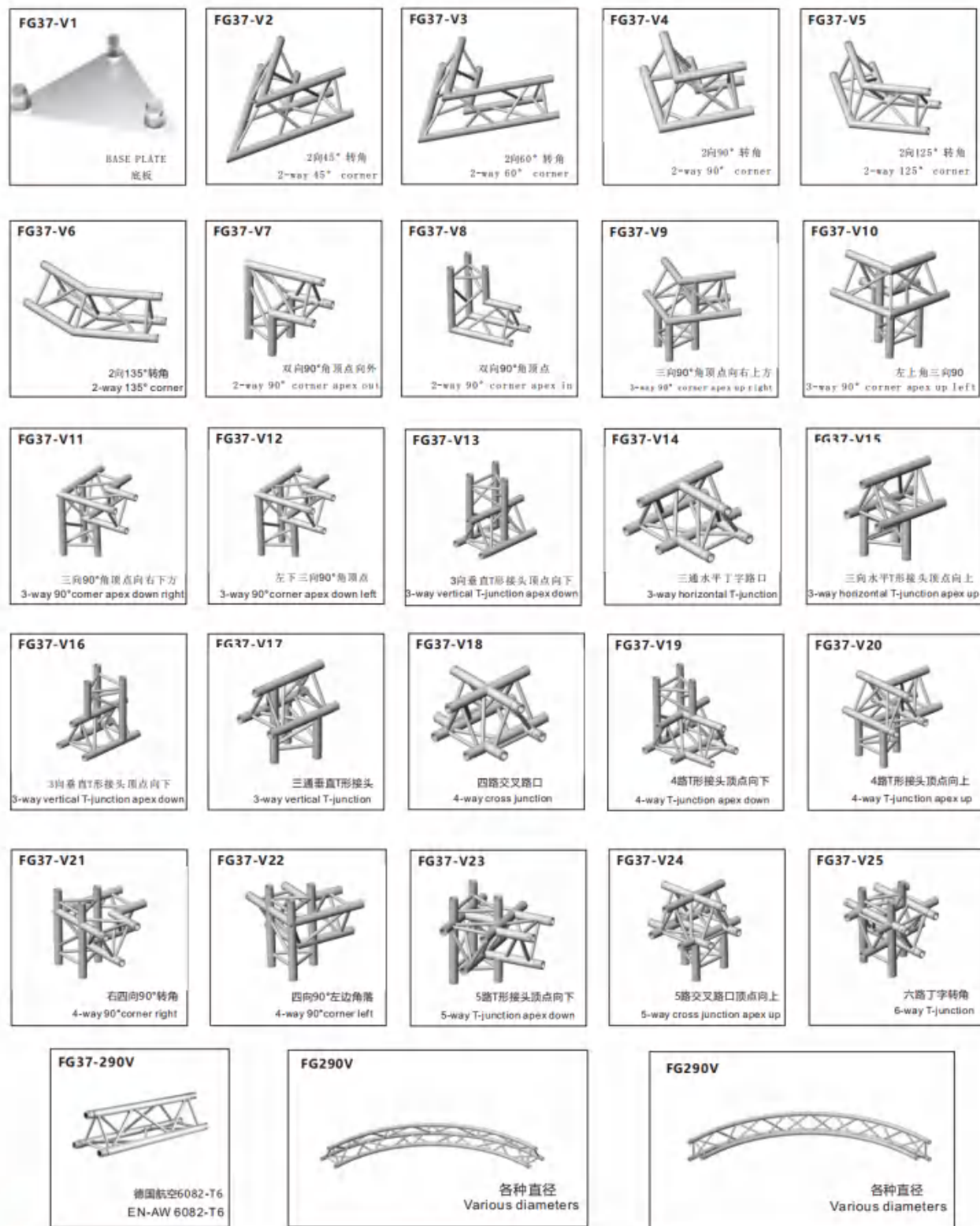
TUV CE I9001 FG390V插销三角架 - 390*390mm triangle								
length		total load	Load per meter	1点	2点	3点	4点	sink
(M)	(ft)	(KG)	(KG)	(KG)	(KG)	(KG)	(KG)	(mm)
4.0	13.1	778.4	194.6	388.9	291.6	194.4	161.7	6
5.0	16.4	777.7	155.5	388.9	291.6	194.4	161.7	11
6.0	19.7	776.2	129.4	388.1	291.1	194.0	160.9	19
7.0	23	765.4	109.3	382.7	287.0	191.3	159.2	30
8.0	26.2	671.4	83.9	335.7	251.8	167.9	139.6	39
9.0	29.5	596.0	66.2	298.0	223.5	148.9	124.0	49
10.0	32.8	539.0	53.9	269.5	202.1	134.8	112.1	61
11.0	36	491.3	44.7	245.6	184.3	122.8	102.2	73
12.0	39.2	452.8	37.7	226.4	169.7	113.2	94.2	88





> FG290V转角接头 - FG290V corner joint

> 插销式灯光桁架.Square Spigot Truss



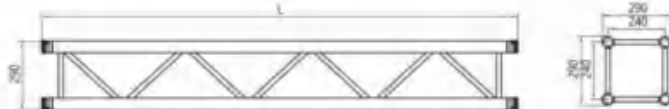
FG290D插销四方架 - 290*290Pin square bracket



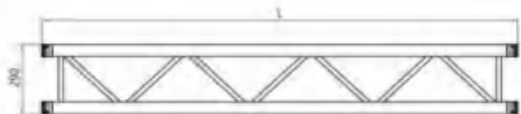
材质: 铝合金6082
 连接配件: 直径35MM铝轴心
 端口规格: 290*290四方架
 端口: 直径50MM铝驳接头
 主管: 50*3MM铝管
 竖管: 20*2MM铝管
 最大负载/跨度: 43KG*12M
 桁架重量: 7.5KG/M

Alloy Material: 6082
 Connectors: 35mm Conical Coupler
 Size: 290*290mm Quadrangle frame
 ConnectEnd: 50mm aluminum splicing
 Tube Main tube: 50x3mm
 Brace tube: 20x2mm
 Max Load /Span: 12m-43kg/m
 Self weight: 7.5KG/M

Top View



Side View



CODE	LENGTH
F38-050	290*290*500
F38-100	290*290*1000
F38-150	290*290*1500
F38-200	290*290*2000
F38-250	290*290*2500
F38-300	290*290*3000
F38-350	290*290*3500
F38-400	290*290*4000

TUV CE 19001

FG290D插销四方架 - 290*290Pin square bracket

Alloy Material: 6082 Tube Main tube: 50x3mm Brace tube: 20x2mm

length	total load	Load per meter	1点	2点	3点	4点	sink	
(M)	(ft)	(KG)	(KG)	(KG)	(KG)	(KG)	(mm)	
4.0	13.1	809.6	202.4	404.3	303.2	202.1	168.2	8
5.0	16.4	808.5	161.7	404.3	303.2	202.1	168.2	16
6.0	19.7	808.5	134.8	404.3	303.2	202.1	168.2	27
7.0	23.0	808.5	115.5	404.3	303.2	202.1	168.2	43
8.0	26.2	788.5	98.6	394.2	295.7	197.1	164.0	63
9.0	29.5	699.9	77.8	350.4	262.8	174.8	145.8	80
10.0	32.8	631.4	63.1	315.7	236.7	157.9	131.3	99
11.0	36.0	576.0	52.4	288.0	216.0	144.0	119.8	120
12.0	39.3	526.7	43.9	263.3	197.6	131.7	109.6	142



FG290D转角接头 - FG290D corner joint

<p>Aluminum plate</p> <p>FG38-D001</p> <p>铝板</p>	<p>FG290D aluminum motherboard</p> <p>FG38-D002</p> <p>FG290D 铝母板</p>	<p>angle aluminum motherboard</p> <p>FG38-D003</p> <p>FG290D 角度铝母板</p>	<p>Universal block</p> <p>FG-D004</p> <p>通用模块</p>
<p>3-way 90° corner</p> <p>FG38-D004</p> <p>三向90°转角</p>	<p>2-way 45° corner</p> <p>FG38-D005</p> <p>双向45°转角</p>	<p>2-way 60° corner</p> <p>FG38-D006</p> <p>双向60°转角</p>	<p>2-way 90° corner</p> <p>FG-D007</p> <p>双向90°转角</p>
<p>2-way 120° corner</p> <p>FG38-D008</p> <p>双向120°转角</p>	<p>2-way 135° corner</p> <p>FG38-D009</p> <p>双向135°转角</p>	<p>3-way T-junction</p> <p>FG38-D010</p> <p>三通T形接头</p>	<p>4-way cross junction</p> <p>FG38-D011</p> <p>四路交叉接头</p>
<p>4-way T-junction</p> <p>FG38-D012</p> <p>四路T形接头</p>	<p>5-way T-junction</p> <p>FG38-D013</p> <p>五路十字接头</p>	<p>6-way T-junction</p> <p>FG38-D014</p> <p>六路丁字接头</p>	<p>2-way 90° corner</p> <p>FG390-D015</p> <p>双向90°转角</p>
<p>180 DEGREE CENTER PIVOT</p> <p>FG38-D016</p> <p>180度中心枢轴</p>	<p>0-180 DEGREE VARIABLE ANGLE CO</p> <p>FG38-D017</p> <p>0-180度可变角</p>	<p>EN-AW 6082-T6</p> <p>FG38-290D</p> <p>德国航空6082-T6</p>	<p>Various diameters</p> <p>FG38-290D</p> <p>各种直径</p>

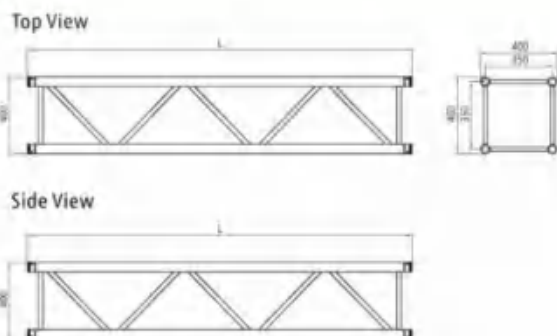


FG390D插销四方架 - 390*390Pin square bracket



材质: 铝合金6082	Alloy Material: 6082
连接配件: 直径35MM铝抽心	Connectors: 35mm Conical Coupler
端口规格: 390*390四方架	Size: 390*390mm triangle
端口: 直径50MM铝驳接头	ConnectEnd : 50mm
主管: 50*3MM铝管	TubeMain tube: 50x3mm
竖管: 20*2MM铝管	Brace tube: 20x2mm
最大负载/跨度: 41KG*16M	Max Load /Span: 16m-41kg/m
桁架重量: 9.5KG/M	Self weight: 9.5KG/M

CODE	LENGTH
FG39-050	390*390*500
FG39-100	390*390*1000
FG39-150	390*390*1500
FG39-200	390*390*2000
FG39-250	390*390*2500
FG39-300	390*390*3000
FG39-350	390*390*3500
FG39-400	390*390*4000



JUNCTIONS OR CONNECTION SYSTEM

2-WAY 90 DEGREE CORNER FG39-D001 	2-WAY 120 DEGREE CORNER FG39-D002 	2-WAY 135 DEGREE CORNER FG39-D003
3-WAY 90 DEGREE CORNER FG39-D005 	4-WAY CROSS JUNCTION FG39-D006 	5-WAY T-JUNCTION FG39-D007
3-WAY T-JUNCTION FG39-D008 	4-WAY T-JUNCTION FG39-D009 	BASE PLATE FG39-D010
6-WAY UNIVERSAL JUNCTION BLOCK FG39-D011 		



TUV CE I9001 FG390D插销四方架 - 390*390Pin square bracket								
Alloy Material:6082 TubeMain tube:50x3mm Brace tube:25x25mm								
length	total load	load per meter	1点	2点	3点	4点	sink	
(M)	(ft)	(KG)	(KG)	(KG)	(KG)	(KG)	(KG)	(mm)
4.0	13.1	897.2	224.3	406.6	336.1	224.1	186.3	2.0
5.0	16.4	897.1	179.4	406.6	336.1	224.1	186.3	4.0
6.0	19.7	896.3	149.4	406.6	336.1	224.1	186.3	9.0
7.0	23.0	894.7	127.8	405.1	335.5	223.6	186.0	16.0
8.0	26.2	893.2	111.7	405.1	335.0	223.3	185.8	24.0
9.0	29.5	894.0	99.3	405.1	335.0	223.3	185.8	35.0
10.0	32.8	893.2	89.3	405.1	335.0	223.3	185.8	49.0
11.0	36.0	897.8	81.6	405.1	335.0	223.3	186.0	66.0
12.0	39.3	887.0	73.9	405.1	332.6	221.8	184.5	85.0
13.0	42.6	820.8	63.1	385.4	307.2	205.2	171.3	101.0
14.0	46.0	765.4	54.7	371.7	286.4	191.3	159.2	117.0
15.0	49.2	716.1	47.7	358.1	268.5	179.0	148.8	135.0
16.0	52.5	665.3	41.6	332.6	249.5	166.3	138.3	153.0

> FG450D插销四方架 - 450*450Quadrangle frame



材质: 铝合金6082 Alloy Material:6082
 连接配件: 直径35MM铝抽心 Connectors:35mm Conical Coupler
 端口规格: 450*450四方架 Size:450*450mm Quadrangle frame
 端口: 直径50-60MM铝驳接头 ConnectEnd :50mm-60mm
 主管: 50*3MM铝管 TubeMain tube:50x3mm
 竖管: 50*2MM铝管 Brace tube:50x2mm
 最大负载/跨度: 43KG*18M Max Load /Span:18m-43kg/m
 桁架重量: 12KG/M Self weight: 12KG/M

CODE LENGTH

FG45-050	450*450*500
FG45-100	450*450*1000
FG45-150	450*450*1500
FG45-200	450*450*2000
FG45-250	450*450*2500
FG45-300	450*450*3000
FG45-350	450*450*3500
FG45-400	450*450*4000



> FG4060D插销四方架 - 400*600Quadrangle frame



材质: 铝合金6082 Alloy Material:6082
 连接配件: 直径35MM铝抽心 Connectors:35mm Conical Coupler
 端口规格: 400*600四方架 Size:400*600mm Quadrangle frame
 端口: 直径50MM铝驳接头 ConnectEnd :50mm cross tube
 主管: 50*3MM铝管 TubeMain tube:50x3mm
 竖管: 50*2MM铝管 Brace tube:20x2mm
 最大载重: 30KG*22M Max Load /Span: 22m-30kg/m
 桁架重量: 16KG/M Self weight: 16KG/M

CODE LENGTH

FG50-050	400*600*500
FG50-100	400*600*1000
FG50-150	400*600*1500
FG50-200	400*600*2000
FG50-250	400*600*2500
FG50-300	400*600*3000
FG50-350	400*600*3500
FG50-400	400*600*4000



TUV CE I9001 GF450D bolt square frame force gauge							
Alloy Material:6082		TubeMain tube:50x3mm		Brace tube:30x2mm			
length	total load	Load per meter	1点	2点	3点	4点	sink
(M)	(KG)	(KG)	(KG)	(KG)	(KG)	(KG)	(mm)
4.0	1070	267	536	402	273	222	3
5.0	1072	214	536	402	273	222	4
6.0	1072	179	536	402	273	222	7
7.0	1065	152	535	401	273	222	9
8.0	1070	134	535	401	273	222	18
9.0	1068	119	535	401	273	222	22
10.0	1060	106	535	401	273	222	40
11.0	1065	97	535	401	273	222	54
12.0	1051	88	530	398	271	220	73
13.0	974	75	491	368	251	204	89
14.0	904	65	458	342	233	190	107
15.0	847	56	429	320	219	178	123
16.0	793	50	398	299	202	159	140
18.0	768	43	371	277	175	133	158

TUV CE I9001 GF4060D bolt square frame force gauge							
Alloy Material:6082		TubeMain tube:50x3mm		Brace tube:30x2mm			
length	total load	sink	1点	sink	2点	3点	4点
跨度		下沉	1点	下沉	2点	3点	4点
m	kg /m	mm	kg	mm	kg	kg	kg
2.0	1718.4	2.0	3436.8	2.0	1718.4	1142.6	859.2
3.0	1142.6	5.0	3116.3	4.0	1713.9	1138.1	856.9
4.0	854.7	9.0	2329.4	7.0	1709.4	1133.6	854.7
5.0	682.0	13.0	1855.4	11.0	1391.5	927.7	770.0
6.0	512.6	19.0	1537.9	15.0	1153.4	769.0	638.2
7.0	374.2	26.0	1309.9	21.0	982.4	654.9	543.6
8.0	284.4	34.0	1137.7	27.0	853.3	568.9	472.1
9.0	222.8	43.0	1002.8	35.0	752.1	501.4	416.2
10.0	178.8	53.0	893.9	43.0	670.4	447.0	371.0
11.0	146.2	65.0	804.1	52.0	603.1	402.1	333.7
12.0	121.4	77.0	728.5	62.0	546.4	364.2	302.3
13.0	102.1	90.0	663.8	72.0	497.8	331.9	275.5
14.0	86.8	105.0	607.7	84.0	455.8	303.8	252.2
15.0	74.5	120.0	558.5	96.0	418.9	279.2	231.8
16.0	64.4	137.0	514.9	109.0	386.1	257.4	213.7
17.0	56.0	154.0	475.8	123.0	356.9	237.9	197.5
18.0	49.0	173.0	440.6	138.0	330.5	220.3	182.9
19.0	43.0	193.0	408.7	154.0	306.5	204.4	169.6
20.0	37.9	214.0	379.5	171.0	284.6	189.7	157.5
21.0	33.6	235.0	352.6	188.0	264.5	176.3	146.3
22.0	29.8	258.0	327.8	207.0	245.8	163.9	136.0

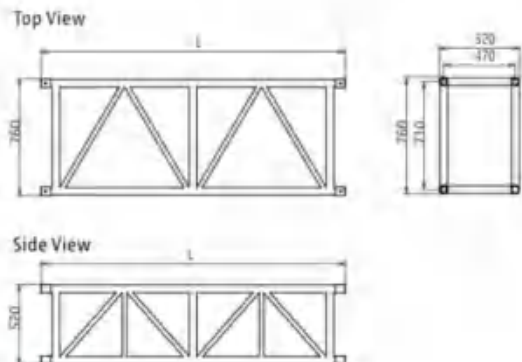
FG5276D插销四方架 - 520*760Quadrangle frame



材质: 铝合金6082 Alloy Material:6082
 连接配件: 直径55MM铝抽心 Connectors:55mm Conical Coupler
 端口规格: 520*760四方架 Size:520*760mm Quadrangle frame
 端口: 直径60MM铝驳接头 ConnectEnd :60mm
 主管: 50*4MM铝管 TubeMain tube:50x4mm
 竖管: 50*2MM铝管 Brace tube:50x2mm
 最大负载/跨度: 34KG*24M Max Load /Span:24m-34kg/m
 桁架重量: 21KG/M Self weight: 21KG/M

FG60在24米(80英尺)的自由跨度上具有出色的负载能力, 或用作一侧带有额外焊接攀爬支撑的塔构件。FG60在主管道中使用了4mm的壁厚, 确保了耐久性和额外的强度。专为需要更高负载的高频使用或安装而设计

FG60 with excellent load capacity on free spans of 24m (80feet) or to be used as tower elements with an extra welded climbing brace on one side. F60 is using the 4mm wallthickness in the maintube which assures durability andextra strength. Designed for high frequency usage orinstallations, which demands higher loading



CODE	LENGTH
FG60-050	520*760*500
FG60-100	520*760*1000
FG60-150	520*760*1500
FG60-200	520*760*2000
FG60-250	520*760*2500
FG60-300	520*760*3000
FG60-350	520*760*3500
FG60-400	520*760*4000

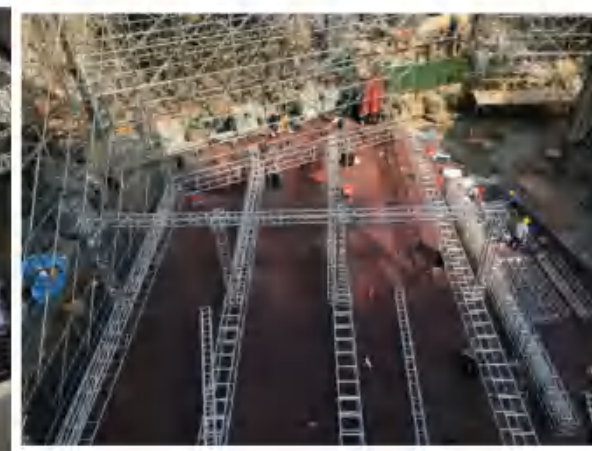
length	Alloy Material:6082		TubeMain tube:50x4mm		Brace tube:50x2mm	
	Total load	Load per meter	shifting	1m	2m	4m
2.0	3995.0	1997.5	1.3	3795.5	1997.5	1322.5
3.0	5972.5	1990.8	1.9	3795.5	1997.5	1322.5
4.0	7950.0	1975.0	2.6	3801.9	1997.5	1315.1
5.0	9927.5	1970.3	3.3	3818.3	1997.5	1307.7
6.0	11905.0	1973.3	4.0	3834.7	1997.5	1300.3
7.0	13882.5	1977.1	4.7	3851.1	1997.5	1292.9
8.0	15860.0	1981.0	5.4	3867.5	1997.5	1285.5
9.0	17837.5	1984.9	6.1	3883.9	1997.5	1278.1
10.0	19815.0	1988.8	6.8	3900.3	1997.5	1270.7
11.0	21792.5	1992.7	7.5	3916.7	1997.5	1263.3
12.0	23770.0	1996.7	8.2	3933.1	1997.5	1255.9
13.0	25747.5	1999.8	8.9	3949.5	1997.5	1248.5
14.0	27725.0	2002.9	9.6	3965.9	1997.5	1241.1
15.0	29702.5	2006.0	10.3	3982.3	1997.5	1233.7
16.0	31680.0	2009.1	11.0	3998.7	1997.5	1226.3
17.0	33657.5	2012.2	11.7	4015.1	1997.5	1218.9
18.0	35635.0	2015.3	12.4	4031.5	1997.5	1211.5
19.0	37612.5	2018.4	13.1	4047.9	1997.5	1204.1
20.0	39590.0	2021.5	13.8	4064.3	1997.5	1196.7
21.0	41567.5	2024.6	14.5	4080.7	1997.5	1189.3
22.0	43545.0	2027.7	15.2	4097.1	1997.5	1181.9
23.0	45522.5	2030.8	15.9	4113.5	1997.5	1174.5
24.0	47500.0	2033.9	16.6	4129.9	1997.5	1167.1
25.0	49477.5	2037.0	17.3	4146.3	1997.5	1159.7
26.0	51455.0	2040.1	18.0	4162.7	1997.5	1152.3
27.0	53432.5	2043.2	18.7	4179.1	1997.5	1144.9
28.0	55410.0	2046.3	19.4	4195.5	1997.5	1137.5
29.0	57387.5	2049.4	20.1	4211.9	1997.5	1130.1
30.0	59365.0	2052.5	20.8	4228.3	1997.5	1122.7



FG60120D插销四方架 - 600*1200Quadrangle frame



材质: 铝合金6082 Alloy Material:6082
 连接配件: 直径55MM铝抽心 Connectors:55mm Conical Coupler
 端口规格: 600*1200四方架 Size:600*1200mm Quadrangle frame
 端口: 直径60MM铝驳接头 ConnectEnd :60mm aluminium barge joint
 主管: 50*5MM 铝管 TubeMain tube:50x5mm
 竖管: 50*3MM铝管 Brace tube:50x3mm
 最大载重: 26KG*30M Max Load /Span:30m-26kg/m
 桁架重量: 28KG/M Self weight: 28KG/M



length	Alloy Material:6082		TubeMain tube:50x4mm cross tube		Brace tube:50x3mm	
	Total load	Load per meter	shifting	1m	2m	4m
2.0	4735.4	2367.7	1.0	4746.9	2373.1	1547.7
3.0	4722.4	1574.1	4.0	4733.9	2367.0	1540.9
4.0	4708.0	1177.0	7.0	3853.0	2360.1	1534.9
5.0	4695.8	939.2	10.0	3070.6	2302.8	1505.7
6.0	4683.6	780.6	15.0	2517.3	1910.1	1249.4
7.0	4332.9	619.0	20.0	2171.4	1628.2	1065.0
8.0	3762.7	470.3	26.0	1887.2	1415.8	925.6
9.0	3320.6	369.0	33.0	1665.6	1249.2	816.9
10.0	2973.0	297.3	40.0	1486.8	1114.7	729.2
11.0	2666.5	242.4	50.0	1338.6	1003.9	656.5
12.0	2424.1	202.0	59.0	1214.8	910.7	595.8
13.0	2209.9	170.0	70.0	1108.6	831.3	543.4
14.0	2027.7	144.8	81.0	1016.9	762.5	499.1
15.0	1863.8	124.3	93.0	936.7	702.1	459.4
16.0	1719.7	107.5	105.0	865.6	649.4	424.2
17.0	1594.0	93.8	119.0	802.2	601.3	393.5
18.0	1481.9	82.3	134.0	744.9	558.5	365.0
19.0	1376.0	72.4	149.0	693.0	519.5	339.5
20.0	1280.7	64.0	165.0	645.6	484.4	316.3
21.0	1200.6	57.2	182.0	602.1	451.5	295.3
22.0	1106.9	50.3	199.0	562.3	421.7	275.8
23.0	1031.4	45.0	218.0	524.9	393.5	257.1
24.0	969.6	40.4	237.0	490.5	367.5	237.4
25.0	1089.0	43.6	240.0	455.6	337.953	218.0
26.0	1019.3	39.2	252.0	420.7	307.692	200.3
27.0	980.1	36.3	264.0	386.3	278.0085	180.6
28.0	935.1	33.4	276.0	351.7	247.863	161.6
29.0	842.2	29.0	288.0	312.5	217.9485	141.9
30.0	784.1	26.1	300.0	278.0	187.572	122.8



> FG5810D插销四方架 - 580*1010Quadrangle frame



材质: 铝合金6082
 连接配件: 直径55MM铝抽心
 端口规格: 580*1010四方架
 端口: 直径60MM铝驳接头
 主管: 50*5MM铝管
 竖管: 50*3MM铝管
 最大负载/跨度: 33M-54kg/m
 桁架重量: 24.5KG/M

Alloy Material: 6082
 Connectors: 55mm Conical Coupler
 Size: 520*760mm
 ConnectEnd: 60mm Quadrangle frame
 Tube Main tube: 50x5mm
 Brace tube: 50x3mm
 Max Load /Span: 33m-54kg/m
 Self weight: 24.5KG/M

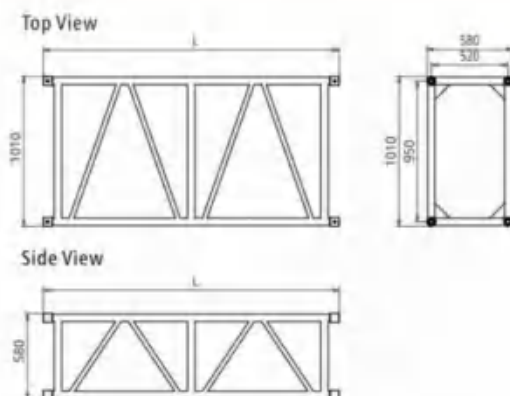
> FG77145D插销四方架 - 770*1450Quadrangle frame



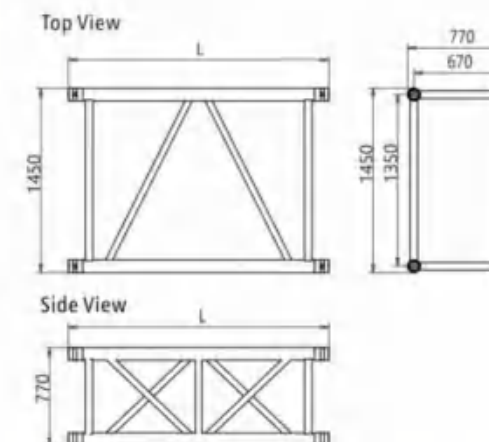
材质: 铝合金6082
 连接配件: 直径55MM铝抽心
 端口规格: 770*1450四方架
 端口: 直径60MM铝驳接头
 主管: 60*5MM 铝管
 竖管: 60*60*3MM铝方管
 最大负载/跨度: 70KG*60M
 桁架重量: 65KG/M

Alloy Material: 6082
 Connectors: 55mm Conical Coupler
 Size: 770*1450mm
 ConnectEnd: 60mm Quadrangle frame
 Tube Main tube: 60x5mm cross tube
 Brace tube: 60x60*3mm
 Max Load /Span: 60m-70kg/m
 Self weight: 65KG/M

CODE	LENGTH
FG65-050	580*1010*500
FG65-100	580*1010*1000
FG65-150	580*1010*1500
FG65-200	580*1010*2000
FG65-250	580*1010*2500
FG65-300	580*1010*3000
FG65-350	580*1010*3500
FG65-400	580*1010*4000



CODE	LENGTH
FG70-050	770*1450*500
FG70-100	770*1450*1000
FG70-150	770*1450*1500
FG70-200	770*1450*2000
FG70-250	770*1450*2500
FG70-300	770*1450*3000
FG70-350	770*1450*3500
FG70-400	770*1450*4000



Metric loading charts

Span ⁺	UDL		CPL		1/3Point Load		1/4Point Load		1/5Point Load	
	Kg/m	mm**	Kg	mm	Kg(2x)	mm	Kg(3x)	mm	Kg(4x)	mm
9	934	20	3357	16	2127	17	1698	18	1416	19
12	518	35	2741	28	1786	30	1461	31	1198	33
15	325	55	2299	44	1529	47	1220	50	996	53
18	221	79	1962	63	1328	67	994	71	828	75
21	158	108	1656	86	1163	91	828	97	690	102
24	117	141	1402	113	1026	120	701	127	584	134
27	89	178	1198	142	899	151	599	160	499	169
30	69	220	1030	176	773	187	515	198	429	209
33	54	266	888	213	666	226	444	239	370	252

Metric loading charts

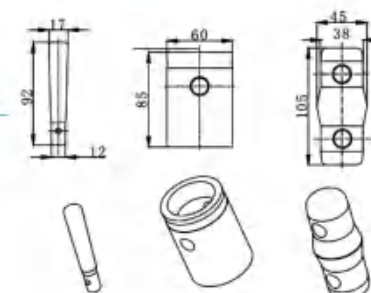
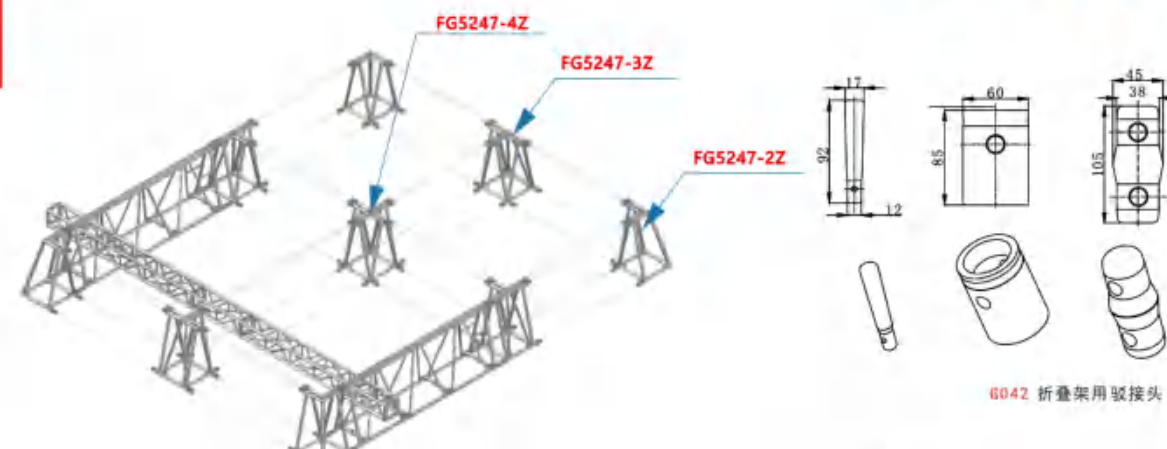
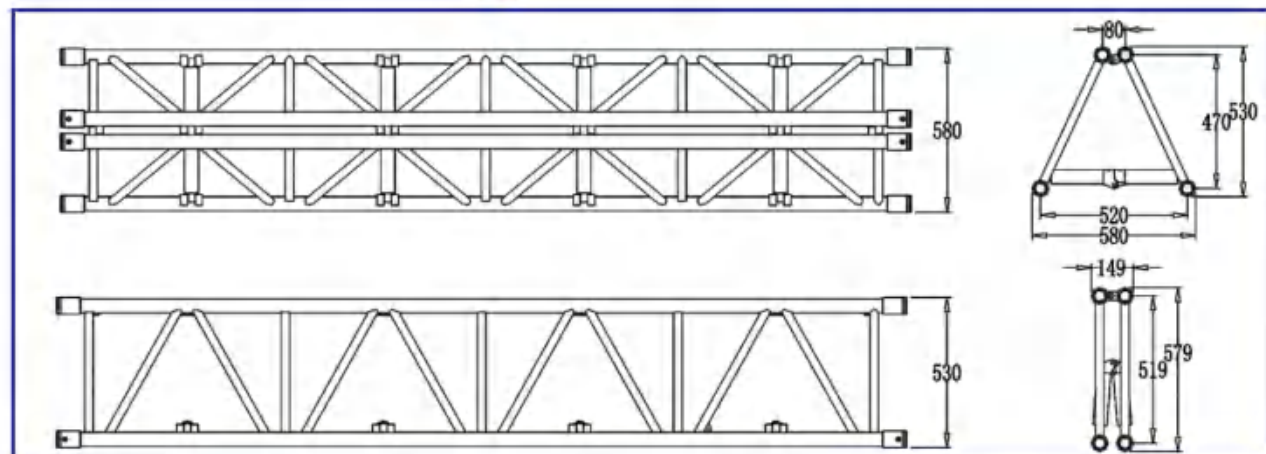
Span ⁺	UDL		CPL		1/3Point Load		1/4Point Load		1/5Point Load	
	Kg/m	mm**	Kg	mm	Kg(2x)	mm	Kg(3x)	mm	Kg(4x)	mm
28	471	173	6780	138	5085	146	3390	156	2814	164
31	394	204	6143	163	4607	174	3072	183	2549	192
34	283	272	5100	217	3825	236	2550	245	2117	254
37	243	310	4665	247	3499	268	2333	279	1936	288
40	210	350	4274	280	3206	305	2137	315	1774	324
43	182	392	3920	314	2940	344	1960	353	1627	362
46	138	485	3300	388	2475	428	1650	437	1370	446
49	120	535	3026	428	2269	473	1513	482	1256	491
52	105	587	2770	470	2078	519	1386	528	1150	538
55	92	642	2533	514	1900	569	1267	578	1051	587
58	80	699	2310	559	1733	620	1155	629	959	638
60	70	759	2100	607	1575	674	1050	683	872	692



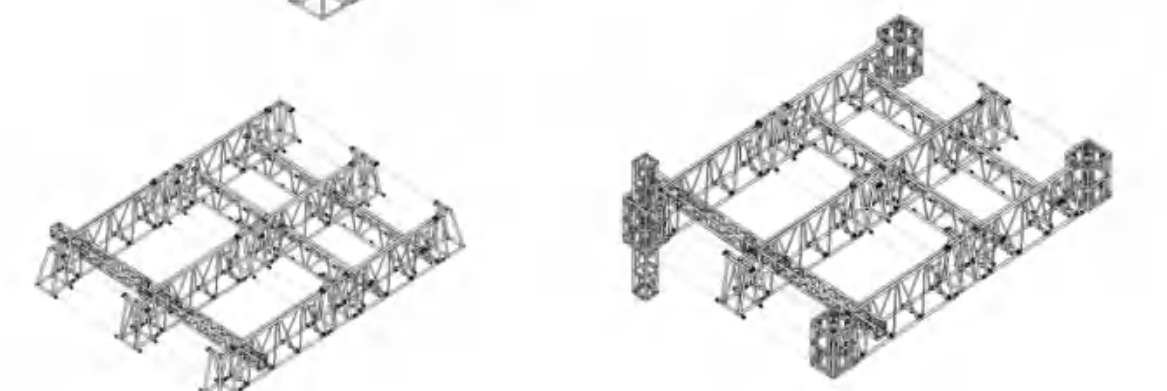


材质: 铝合金6082
 连接配件: 直径55MM铝抽心
 端口规格: 520*470折叠架
 端口: 直径60MM铝驳接头
 主管: 50*4MM铝管
 斜管: 30*2MM铝管
 最大负载/跨度: 59KG*20M
 桁架重量: 19KG/M

Alloy Material: 6082
 Connectors: 55mm Conical Coupler
 Size: 520 * 470 folding rack
 Connect End: 60mm
 Tube Main tube: 50x4mm
 Oblique tube: 30x2mm
 Max Load /Span: 20m-59kg/m
 Self weight: 19KG/M



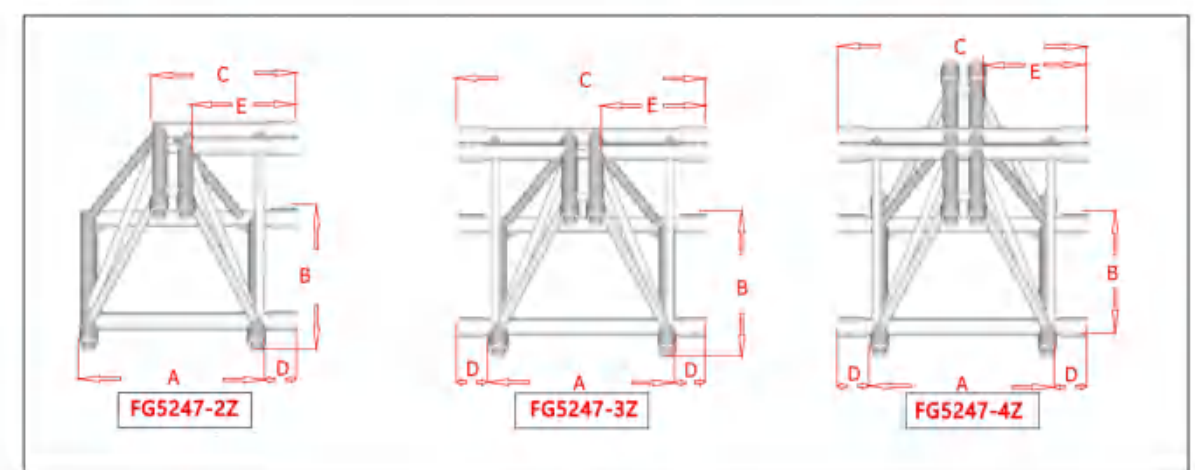
6042 折叠架用驳接头



TUV CE I9001 5247 Folding Frame Force Table

length		total load	Load per meter	1点	2点	3点	4点	sink
(M)	(ft)	(KG)	(KG)	(KG)	(KG)	(KG)	(KG)	(mm)
4.0	13.1	2809.0	702.2	2756.2	2105.4	1403.6	1167.8	4.0
5.0	16.4	2807.2	561.4	2319.8	1772.1	1181.4	983.0	6.0
6.0	19.7	2809.0	468.2	1932.8	1475.8	984.3	818.9	8.0
7.0	23.0	2809.0	401.3	1657.2	1265.9	843.9	702.2	10.0
8.0	26.2	2809.0	351.1	1342.0	1006.5	671.0	566.2	20.0
9.0	29.5	2621.5	291.3	1313.0	984.7	656.5	546.2	31.0
10.0	32.8	2358.4	235.8	1181.0	885.7	590.5	491.3	40.0
11.0	36.0	2149.0	195.4	1073.6	805.2	536.8	446.6	50.0
12.0	39.3	1964.2	163.7	984.7	738.6	492.4	409.6	61.0
13.0	42.6	1819.0	139.9	909.0	681.1	454.5	378.1	74.0
14.0	45.9	1687.8	120.6	843.9	633.0	422.0	351.0	89.0
15.0	48.2	1570.8	104.7	787.6	590.7	393.8	327.6	103.0
16.0	52.5	1478.4	92.4	738.3	553.8	369.2	307.1	118.0
17.0	55.7	1391.3	81.8	695.2	521.4	347.6	289.2	136.0
18.0	59.0	1314.7	73.0	656.5	492.4	328.2	273.1	154.0
19.0	52.3	1237.3	65.1	622.2	466.7	311.2	258.8	171.0
20.0	65.6	1179.2	59.0	590.5	442.9	295.2	245.6	195.0

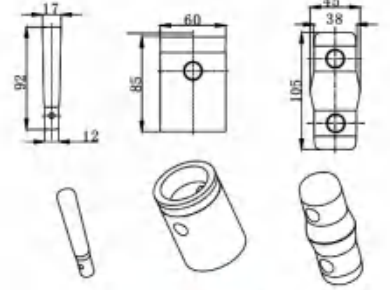
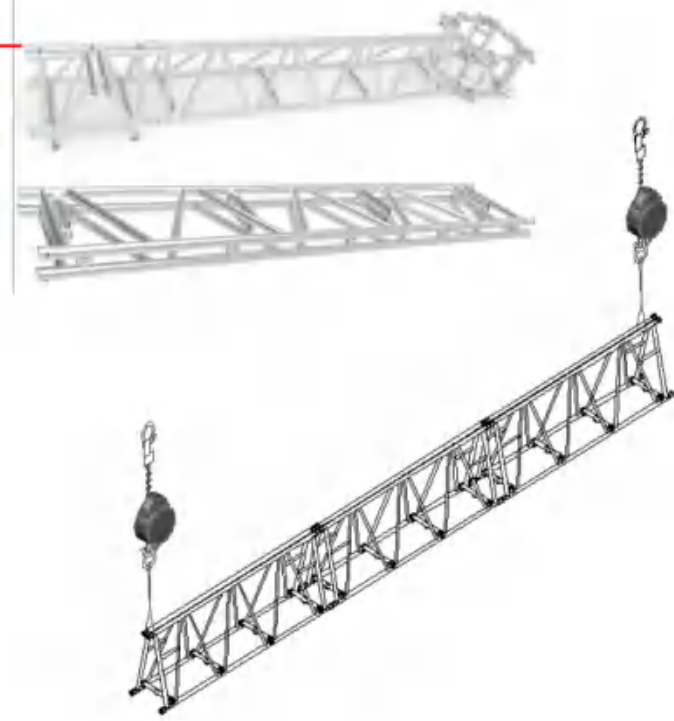
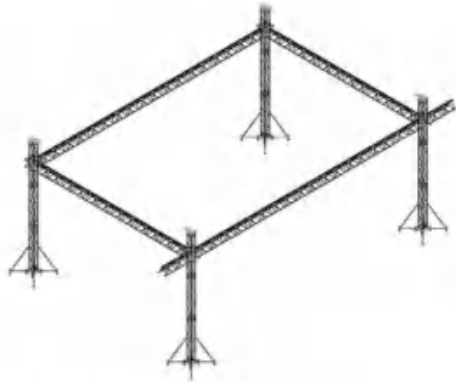
尺寸	A	B	C	D	E
FG5247-2Z	580	675	450	95	315
FG5247-3Z	580	675	770	95	315
FG5247-4Z	580	770	770	95	315



FG5295D插销折叠架 - 520*950Qfolding rack

材质: 铝合金6082
 连接配件: 直径55MM铝抽心
 端口规格: 520*950折叠架
 端口: 直径60MM铝驳接头
 主管: 50*4MM铝管
 斜管: 42*3MM铝管
 最大负载/跨度: 29KG*36M
 桁架重量: 24.5KG/M

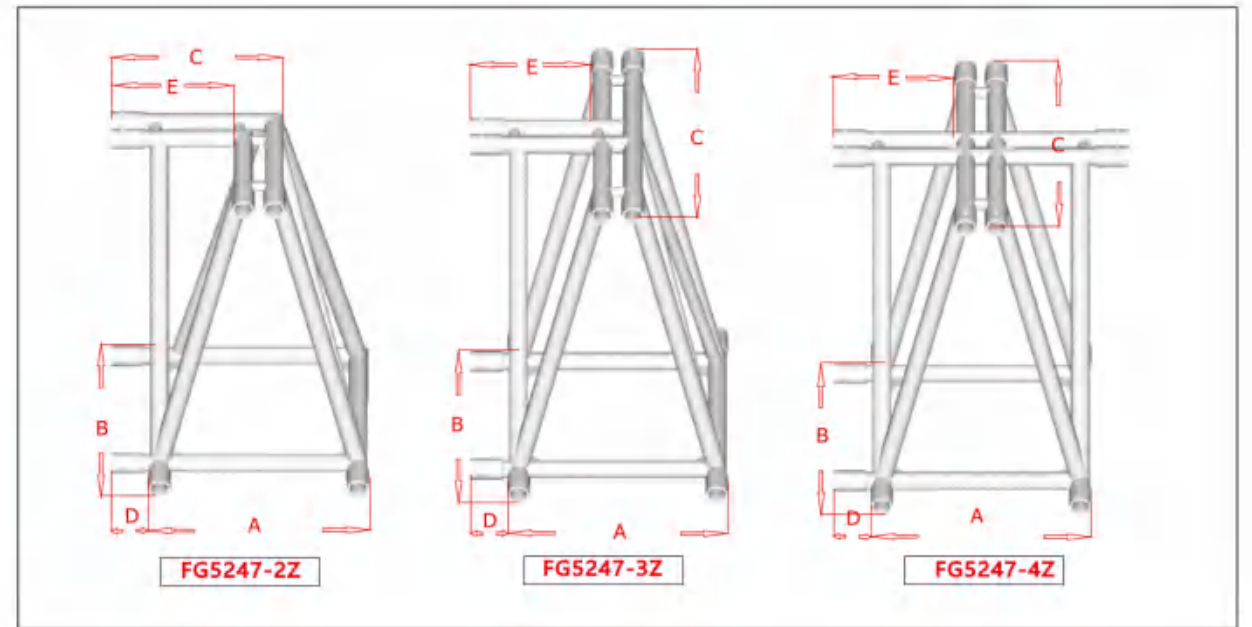
Alloy Material: 6082
 Connectors: 55mm Conical Coupler
 Size: 520 * 950 folding rack
 ConnectEnd : 60mm
 TubeMain tube: 50x4mm
 Oblique tube: 42x3mm
 Max Load /Span36m-29kg/m
 Self weight: 24.5KG/M



G042 折叠架用驳接头

尺寸	A	B	C	D	E
编号					
FG5247-2Z	580	675	450	95	315
FG5247-3Z	580	675	770	95	315
FG5247-4Z	580	770	770	95	315

length		total load	Load per meter	1点	2点	3点	4点	sink
(M)	(ft)	(KG)	(KG)	(KG)	(KG)	(KG)	(KG)	(mm)
2.4	7.9	1899	791	1877	939	626	469	0
4.8	15.7	1866	389	1877	939	626	469	1
7.2	23.6	1833	255	1693	846	564	423	3
9.6	31.5	1800	188	1501	751	500	375	8
12.0	39.4	1767	147	1349	674	449	337	15
14.4	47.2	1734	120	1224	612	408	324	25
16.8	55.1	1701	101	1120	560	374	280	38
19.2	63.0	1669	87	1034	517	343	258	56
21.6	70.8	1635	76	959	479	320	240	78
24.0	78.7	1554	65	894	447	298	224	102
26.4	86.6	1456	55	837	419	279	209	127
28.8	94.5	1357	47	788	394	263	197	154
31.2	102.3	1253	40	744	372	248	186	180
33.6	110.2	1153	34	704	352	235	176	207
36.0	118.1	1055	29	669	334	223	167	233



附属品

<p>CONICAL COUPLER KIT 锥形连接器套件</p>  <p>编码:GD001</p>	<p>Aluminum sleeve 铝套筒</p>  <p>编码:GD002</p>	<p>Axis adjustment foot 轴心调脚</p>  <p>编码:GD003</p>
<p>CONICAL SPIGOT 锥形套管</p>  <p>编码:GD004</p>	<p>Iron half axis 铁半轴</p>  <p>编码:GD005</p>	<p>R CLIPS R夹子</p>  <p>编码:GD006</p>
<p>PIN+R CLIPS 栓+R夹子</p>  <p>编码:GD007</p>	<p>Connecting rod P10 连接杆P10</p>  <p>编码:GDP10</p>	<p>Connecting rod P11 连接杆P11</p>  <p>编码:GDP11</p>
<p>MUSHROOM SPIGOT 蘑菇塞</p>  <p>编码:GD008</p>	<p>HALF CONICAL KIT 半锥形套件</p>  <p>编码:GD009</p>	<p>HALF CONICAL BOX KIT 半锥形转角套件</p>  <p>编码:GD010</p>

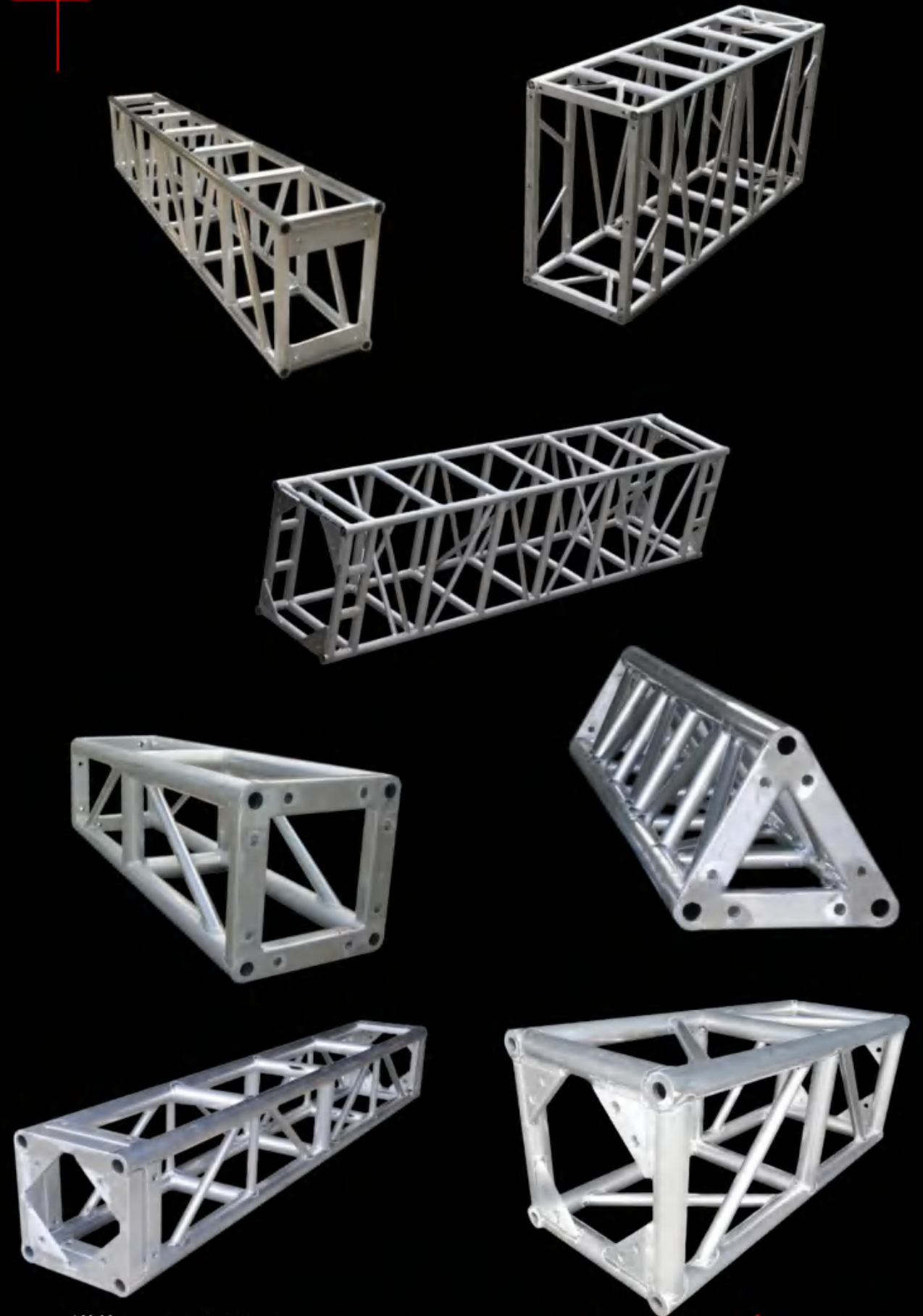
附属品

<p>SPACER COUPLER 间隔耦合器</p>  <p>编码:GD011</p>	<p>SPACER SPIGOT KIT 隔套套件</p>  <p>编码:GD012</p>	<p>180° union 180° 活接头</p>  <p>编码:GD013</p>
<p>EYE CLAMP 锥形连接器套件</p>  <p>编码:GD014</p>	<p>FOLD COUPLER KIT 折叠耦合器套件</p>  <p>编码:GD015</p>	<p>SPACER TIGER CLAMP 垫片跳汰机夹具</p>  <p>编码:GD016</p>
<p>HALF CONICAL CLAMP 半锥夹扣</p>  <p>编码:GD017</p>	<p>TV CONICAL CLAMP 电视锥夹扣</p>  <p>编码:GD018</p>	<p>HOOK CLAMP 灯钩夹扣</p>  <p>编码:GD019</p>
<p>HOOK CLAMP 灯钩夹扣</p>  <p>编码:GD020</p>	<p>BOLT CLAMP 螺栓夹扣</p>  <p>编码:GD021</p>	<p>HOOK CLAMP 钩夹</p>  <p>编码:GD022</p>

HOOK STEEL CLAMP 钩钢夹 编码:GD023	HOOK ALU CLAMP 吊钩铝夹 编码:GD024	BRACKET KIT 吊铃 编码:GD025
SWIVEL CLAMP HV 双扣旋转夹 编码:GD027	SWIVEL CLAMP LT 单扣旋转夹具 编码:GD028	SWIVEL CLAMP FX 旋转夹具FX 编码:GD029
D SHACKLE 吊钩环 编码:GD030	EYE NUT 螺母吊环 编码:GD031	STEEL WIRES 钢丝 编码:GD032
TURNBUCKLE KIT 螺丝扣套件 编码:GD033	SAFETY ROPE 安全绳 编码:GD034	SOFT ERGO WIRES ERGO 编码:GD035

TIE RATCHETS 拉杆棘轮 编码:GD036	STAGE SLING 舞台吊索 编码:GD037	STAGE ROUND SLING 舞台圆形吊索 编码:GD038
CABLE PROTECTOR 电缆槽 编码:GD039	BEARER CLAMP 承载夹 编码:GD040	Accessory flight box 配件飞行箱 编码:GD041
RATCHET WRENCH 棘轮扳手 编码:GD042	RIGGING HAND 索具手 编码:GD043	ELECTRIC WRENCH 电动扳手 编码:GD044
TRUSS BAG 桁架包 编码:GD045	SAFETY HELMET 安全帽 编码:GD046	SAFETY STRAP 安全带 编码:GD047

> 螺丝式灯光桁架FN-D系列Square Bolt Truss FN-D



螺丝式灯光桁架FN-D系列 Square Bolt Truss FN-D



FN300V三角螺丝架, 轻型结构, 适用与固定安装, 剧院, 酒店展会 学校 教堂 吊装, 支持各种尺寸定制, 圆形 椭圆, 表面可以做烤漆, 阳极处理, 各种颜色。

FN300V triangular screw holder, lightweight structure, suitable for fixed installation in theaters, hotels Exhibition school church hoisting, supporting various sizes customization, circular ellipse, surface can be made Baking paint, anodizing, various colors.

FN-V



FN300D铝合金螺丝四方架, 欧美款设计, 是一款重型演出桁架 适合室外演出, 顶棚搭建, 中大型演出活动, 根据不同跨度选型号, 规格 FN300D FN400D FN450D FN500D FN4060D FN5276D FN60120D 等系列结构

FN300D aluminum alloy screw square frame, designed in European and American styles, is a heavy-duty performance truss suitable for outdoor performances, ceiling construction, medium to large performance activities, select models and specifications according to different spans FN300D FN400D FN450D FN500D FN4060D FN5276D FN60120D and other series structures

FN-D



FN400A铝合金三角板螺丝四方架, 欧美款设计, 是一款重型演出桁架 适合室外演出, 顶棚搭建, 中大型演出活动, 根据不同跨度选型号, 规格 FN300S FN400S FN450S FN500S FN4060S FN5276S FN60120S 等系列结构

FN400A aluminum alloy triangular plate screw square frame, designed in European and American styles, is a heavy-duty performance truss suitable for outdoor performances, ceiling construction, medium to large performance activities, select models and specifications according to different spans FN300A FN400A FN450A FN500A FN4060A FN5276A FN60120A and other series structures

FN-S



FN400L铝合金托马斯桁架, 此款桁架为重型桁架, 端口采用L型加厚铝板, 适用与大型音乐节, 大型赛事, 车展 室外电音节等中大型活动使用, 据不同跨度选型号, 规格 FN300L FN400L FN450L FN500L FN4060L FN5276L FN60120L 等系列结构, 表面可以做烤漆, 阳极处理, 各种颜色。

FN400L aluminum alloy Thomas truss, this truss is a heavy-duty truss with L-shaped thickened aluminum plate at the end, suitable for used for large and medium-sized events such as large-scale music festivals, sports events, and car shows, selected according to different spans Model and specification FN300L FN400L FN450L FN500L FN4060L FN5276L FN60120L and other series Column structure, surface can be painted, anodized, and of various colors.

FN-L



我们的 FN300E 位于矩形桁架的前线, 有助于满足您苛刻的项目要求, 因为它专为需要重型性能的应用而开发。它是租赁公司的完美选择, 它具有我们的端镀连接系统, 具有更大的抗扭曲性, 减少弯曲, 并且由于没有变形风险, 因此多年来其他桁架之间的绝对连接兼容性。所有四个侧面的对角线使其完全抗扭。

Our FN300E is on the front line of rectangular truss that helps tame your demanding projects, as it has been specifically developed for applications that require heavy-duty performance. A perfect choice for rental companies, it features our end plated connection system for greater resistance to twisting, decrease in bending and absolute connection compatibility between other trusses throughout the years due to no risk of deformation. Diagonals on all four sides make it fully anti-torsive.

FN-E

螺丝式灯光桁架 FN290E ---- Square Bolt Truss FN290E

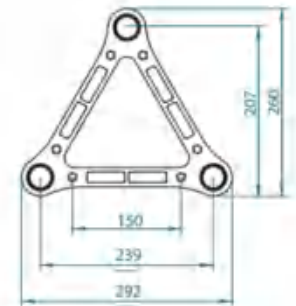
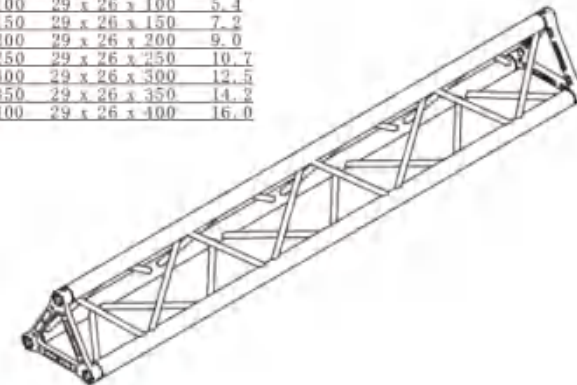


材质: 铝合金6082
连接配件: M10 螺丝
端口规格: 290*260MM
端口: 挤压铝
主管: 48*3MM铝管
竖管: 30*2MM铝管
最大安全受力跨度12M*13KG/M
可用长度(厘米)100-150-200-250-300-350-400

Alloy Material: 6082
Connectors: M10 bolt connection kit
Size: 287*260MM
Connect End: aluminium
Tube Main tube: 48x3mm
Brace tube: 30x2mm
Max Load / Span: 12m-13kg/m
Available length (cm):
100 - 150 - 200 - 250 - 300 - 350 - 400

Linear elements

code	cm	kg
FN290E10	29 x 26 x 10.5	2.3
FN290E21	29 x 26 x 21	2.6
FN290E25	29 x 26 x 25	2.7
FN290E50	29 x 26 x 50	3.7
FN290E100	29 x 26 x 100	5.4
FN290E150	29 x 26 x 150	7.2
FN290E200	29 x 26 x 200	9.0
FN290E250	29 x 26 x 250	10.7
FN290E300	29 x 26 x 300	12.5
FN290E350	29 x 26 x 350	14.2
FN290E400	29 x 26 x 400	16.0



Load table / Spigot connection

SPAN	Unit distributed load			Centre point load			Triang point load			Quarter point load			Fifth point load		
	Down-load	Sub-load	Central deflection	Down-load	Full-load	Central deflection	Down-load	Full-load	Central deflection	Down-load	Full-load	Central deflection	Down-load	Full-load	Central deflection
m	kg/m	kg	mm	kg	kg	mm	kg	kg	mm	kg	kg	mm	kg	kg	mm
1	1219	2820	0	1493	3461	0	908	2085	2	680	1519	0	450	1000	0
2	782	1845	-3	982	2211	3	586	1372	3	391	872	3	306	682	3
3	545	1284	0	657	1527	0	408	930	0	259	590	0	175	392	0
4	382	890	10	484	1094	0	288	670	11	182	410	10	130	290	10
5	282	636	26	350	781	22	207	456	17	131	298	15	90	202	14
6	205	467	43	248	569	37	146	332	24	94	210	22	63	144	21
7	148	337	60	175	398	52	104	237	31	66	147	29	45	100	28
8	108	246	76	124	284	66	75	168	37	47	102	35	32	71	34
10	67	153	112	77	173	92	46	104	49	29	64	44	19	42	46
11	51	116	128	57	128	107	34	77	55	22	48	49	15	33	50
12	41	92	144	43	97	123	26	58	62	17	36	53	11	25	37
15	26	59	180	28	63	159	16	38	77	10	24	37	7	16	22
20	15	35	240	17	38	216	8	23	107	5	14	19	4	8	11
25	9	20	300	10	22	273	4	13	136	2	8	11	2	5	6
30	6	14	360	6	15	330	2	9	165	1	5	6	1	3	4

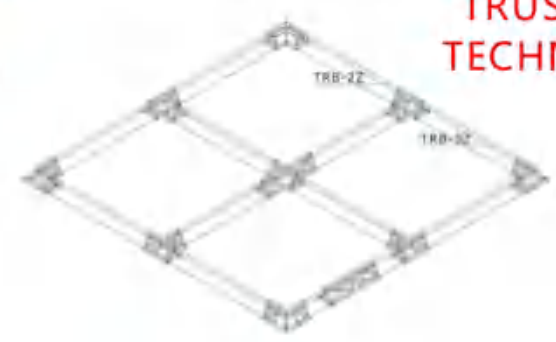
螺丝式灯光桁架 **FN300V** ----Square Bolt Truss **FN300V**



材质: 铝合金6082 Alloy Material:6082
 连接配件: M14*75-8.8级 Connectors:M14*75-8.8级
 端口规格: 300*300MM三角架 Size:300*300MM triangle
 端口: 50*25MM "目字管" ConnectEnd : aluminium
 主管: 50*3MM铝管 TubeMain tube:50x3mm
 竖管: 25*2MM铝管 Vice tube:25x2mm
 斜管: 25*2MM铝管 Brace tube:25x2mm
 最大安全受力跨度12M*21KG/M Max Load /Span: 12m-21kg/m
 可用长度 (厘米)100-150-200 Available lenght (cm):
 250 -300-350-400 100 -150 -200 -250 -300 -350 -400



TRUSS SYSTEM TECHNICAL DATA



Linear elements

code	cm	kg
FN300V10	30 x 30 x 10.5	1.8
FN300V21	30 x 30 x 21	2.1
FN300V25	30 x 30 x 25	2.0
FN300V50	30 x 30 x 50	3.25
FN300V100	30 x 30 x 100	6.0
FN300V150	30 x 30 x 150	8.25
FN300V200	30 x 30 x 200	11.0
FN300V250	30 x 30 x 250	13.75
FN300V300	30 x 30 x 300	16.5
FN300V350	30 x 30 x 350	19.25
FN300V400	30 x 30 x 400	22.0

Linear elements

code	cm	kg
FN400V10	40 x 40 x 10.5	2.5
FN400V21	40 x 40 x 21	3.2
FN400V25	40 x 40 x 25	3.7
FN400V50	40 x 40 x 50	5.5
FN400V100	40 x 40 x 100	7.5
FN400V150	40 x 40 x 150	11.2
FN400V200	40 x 40 x 200	15.0
FN400V250	40 x 40 x 250	18.8
FN400V300	40 x 40 x 300	22.5
FN400V350	40 x 40 x 350	26.5
FN400V400	40 x 40 x 400	29.8

TUV CE 19001 FN300V- Triangle Force Meter								
length		total load	Load per meter	1点	2点	3点	4点	sink
(M)	(ft)	(KG)	(KG)	(KG)	(KG)	(KG)	(KG)	(mm)
4.0	13.1	781.4	195.4	390.7	293.0	195.4	162.6	5.0
5.0	16.4	624.8	125.0	312.4	234.3	156.2	130.0	13.0
6.0	19.7	522.7	87.1	261.4	196.0	130.7	108.8	22.0
7.0	23	443.5	63.4	221.8	166.3	110.9	92.2	33.0
8.0	26.2	387.2	48.4	193.6	145.2	96.8	80.5	45.0
9.0	29.5	340.6	37.8	170.7	128.0	85.4	71.1	59.0
10.0	32.8	308.0	30.8	154.0	115.5	77.0	64.0	75.0
11.0	36	280.7	25.5	140.8	105.6	70.4	58.6	92.0
12.0	39	253.4	21.1	126.7	95.0	63.4	52.7	110.0

TUV CE 19001 FN400V- Triangle Force Meter								
length		total load	Load per meter	1点	2点	3点	4点	sink
(M)	(ft)	(KG)	(KG)	(KG)	(KG)	(KG)	(KG)	(mm)
4.0	13.1	951.0	237.8	444.4	333.3	222.2	184.9	9.0
5.0	16.4	888.8	177.8	444.4	333.3	222.2	184.9	14.0
6.0	19.7	887.0	147.8	443.5	332.6	221.8	184.6	23.0
7.0	23	874.7	125.0	437.4	328.0	218.7	181.9	34.0
8.0	26.2	767.4	95.9	383.7	287.8	191.8	159.6	45.0
9.0	29.5	681.1	75.7	340.6	255.4	170.3	141.7	53.0
10.0	32.8	616.0	61.6	308.0	231.0	154.0	128.2	77.0
11.0	36	561.4	51.0	280.7	210.5	140.4	116.8	78.0
12.0	39.2	517.4	43.1	258.7	194.0	129.4	107.6	97.0



螺丝式灯光桁架 FN290E ---- Square Bolt Truss FN290E



材质: 铝合金6082
连接配件: M10 螺栓
端口规格: 290*290MM
端口: 挤压铝
主管: 48*3MM铝管
竖管: 20*2MM铝管
最大安全受力跨度18M*31KG/M
可用长度 (厘米)100-150-200
250 -300-350-400

Alloy Material:6082
Connectors: M10bolt connection kit
Size:290*290MM
ConnectEnd : aluminium
TubeMain tube:48x3mm
Brace tube:20x2mm
Max Load /Span: 18m-31kg/m
Available lenght (cm):
100 - 150 -200 -250 -300 -350 -400

Linear elements

code	cm	kg
FN290E10	30 x 30 x 10.5	3.1
FN290E21	30 x 30 x 21	3.6
FN290E25	30 x 30 x 25	4.1
FN290E50	30 x 30 x 50	4.3
FN290E100	30 x 30 x 100	5.8
FN290E150	30 x 30 x 150	9.1
FN290E200	30 x 30 x 200	12.3
FN290E250	30 x 30 x 250	15.5
FN290E300	30 x 30 x 300	18.7
FN290E350	30 x 30 x 350	21.9
FN290E400	30 x 30 x 400	28.4



The application of the load shall be on the centre line of the truss. The values shown in the table are the allowable statics loads that can be applied to the truss. This is the live load or the payloadThe self weight of the truss has been taken into account when calculating the values in the table. it should be noted that this are idealised loading condition and the User shall re-analyze the truss for the loading condition which prevail for theapplication begin considered

跨距 m	分布式荷载			中心点荷载			第三点荷载			四分之一点荷载			第五点荷载		
	重点 kg/m	全部 公斤	中心的 偏转 毫米	重点 公斤	全部 公斤	中心的 偏转 毫米	重点 公斤	全部 公斤	中心的 偏转 毫米	重点 公斤	全部 公斤	中心的 偏转 毫米	重点 公斤	全部 公斤	中心的 偏转 毫米
1	2775	2775	0	2775	2775	0	1387	2775	0	925	2775	0	694	2775	0
2	1384	2768	2	2677	2677	3	1384	2768	2	923	2768	2	692	2768	2
3	920	2760	6	1894	1894	6	1335	2670	7	920	2760	7	690	2760	7
4	688	2753	13	1454	1454	11	1046	2692	14	753	2759	14	614	2454	14
5	492	2462	24	1175	1175	18	955	1709	22	602	1809	22	494	1976	23
6	340	2039	34	982	982	26	720	1439	33	501	1603	32	412	1649	33
7	248	1734	46	840	840	36	619	1239	45	427	1282	43	352	1410	45
8	188	1503	60	732	732	47	542	1083	59	371	1114	57	307	1227	60
9	147	1323	76	646	646	60	480	960	76	327	981	72	271	1083	76
10	118	1176	94	576	576	75	429	859	94	291	874	89	241	966	94
11	96	1056	114	518	518	91	387	774	114	262	785	108	217	869	114
12	79	954	136	469	469	109	351	703	136	237	710	129	197	786	135
13	67	866	159	427	427	129	320	641	161	215	645	151	179	715	159
14	56	790	185	390	390	150	294	587	187	196	589	176	163	654	185
15	48	723	212	357	357	173	270	540	215	180	539	202	150	600	213
16	42	664	241	328	328	198	249	497	246	165	495	230	138	551	242
17	36	611	272	302	302	225	230	459	278	152	456	260	127	508	274
18	31	563	305	278	278	254	213	425	313	140	420	292	117	469	307



螺丝式灯光桁架 FN400E ---- Square Bolt Truss FN400E

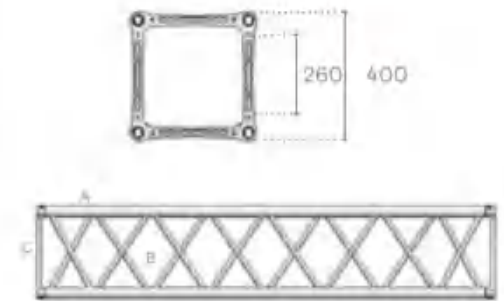


材质: 铝合金6082
连接配件: M10 螺栓
端口规格: 400*290MM
端口: 挤压铝
主管: 48*3MM铝管
竖管: 20*2MM铝管
最大安全受力跨度18M*50KG/M
可用长度 (厘米)100-150-200
250 -300-350-400

Alloy Material:6082
Connectors: M10bolt connection kit
Size:400*400MM
ConnectEnd : aluminium
TubeMain tube:48x3mm
Brace tube:20x2mm
Max Load /Span: 18m-50kg/m
Available lenght (cm):
100 - 150 -200 -250 -300 -350 -400

Linear elements

code	cm	kg
FN400E10	30 x 30 x 10.5	4.4
FN400E21	30 x 30 x 21	4.8
FN400E25	30 x 30 x 25	5.6
FN400E50	30 x 30 x 50	7.6
FN400E100	30 x 30 x 100	11.3
FN400E150	30 x 30 x 150	14.9
FN400E200	30 x 30 x 200	18.6
FN400E250	30 x 30 x 250	22.3
FN400E300	30 x 30 x 300	26.0
FN400E350	30 x 30 x 350	29.6
FN400E400	30 x 30 x 400	33.3



The application of the load shall be on the centre line of the truss. The values shown in the table are the allowable statics loads that can be applied to the truss. This is the live load or the payloadThe self weight of the truss has been taken into account when calculating the values in the table. it should be noted that this are idealised loading condition and the User shall re-analyze the truss for the loading condition which prevail for theapplication begin considered

跨距 m	分布式荷载			中心点荷载			第三点荷载			四分之一点荷载			五点荷载		
	重点 kg/m	全部 公斤	中心的 偏转 毫米	重点 公斤	全部 公斤	中心的 偏转 毫米	重点 公斤	全部 公斤	中心的 偏转 毫米	重点 公斤	全部 公斤	中心的 偏转 毫米	重点 公斤	全部 公斤	中心的 偏转 毫米
1	3650	3650	0	3650	3650	0	1825	3650	0	1217	3650	0	913	3650	0
2	1825	3644	0	3627	3627	0	1796	3647	1	1215	3644	1	911	3644	1
3	1213	2688	4	3580	2688	8	1408	2688	4	1095	3176	5	807	3627	5
4	908	2621	8	3533	2621	12	1379	2621	8	1080	2621	8	787	3088	8
5	693	2467	16	3486	2467	16	1350	2467	16	1065	2467	16	767	2548	16
6	498	2313	24	3439	2313	24	1321	2313	24	1050	2313	24	747	2176	24
7	393	2159	32	3392	2159	32	1292	2159	32	1035	2159	32	727	1804	32
8	298	2005	40	3345	2005	40	1263	2005	40	1020	2005	40	707	1432	40
9	213	1900	48	3298	1900	48	1234	1900	48	1005	1900	48	687	1060	48
10	178	1746	56	3251	1746	56	1205	1746	56	990	1746	56	667	688	56
11	143	1592	64	3204	1592	64	1176	1592	64	975	1592	64	647	316	64
12	108	1438	72	3157	1438	72	1147	1438	72	960	1438	72	627	124	72
13	83	1284	80	3110	1284	80	1118	1284	80	945	1284	80	607	124	80
14	58	1130	88	3063	1130	88	1089	1130	88	930	1130	88	587	124	88
15	43	1025	96	3016	1025	96	1060	1025	96	915	1025	96	567	124	96
16	33	920	104	2969	920	104	1031	920	104	900	920	104	547	124	104
17	23	815	112	2922	815	112	1002	815	112	885	815	112	527	124	112
18	13	710	120	2875	710	120	973	710	120	870	710	120	507	124	120

40m大跨度桁架



■ 规格型号:FN60105D螺丝四方架

材 质 : 6082
 连接配件 : M14x105--8.8级六角螺丝
 端口规格 : 600*1050mm四方
 端 口 : 50x40mm"圆"型材
 主 管 : \varnothing 50x4mm "田"型材
 竖 管 : \varnothing 50x2mm
 斜 管 : \varnothing 30x2mm
 最大安全受力跨度 : 36m-23kg/m 40m-16.3kg/m

■ FN60105DSquare Bolt Truss

Alloy Material:6082
 Connectors : M14x105--8.8
 Size : 300*400mm Square
 Connect End : 50x40mm"圆"
 TubeMain tube: \varnothing 50x4mm "田"
 Vice tube: \varnothing 50x2mm
 Brace tube: \varnothing 30x2mm
 Max Load /Span: 36m-23kg/m 40m-16.3kg/m



长度 (M)	总受重 (KG)	kg/m (KG)	下沉 (mm)	1点kg (KG)	2点kg (KG)	3点kg (KG)	4点kg (KG)
18.0	1482	82	134	745	559	365	301
19.0	1376	72	149	693	520	340	280
20.0	1281	64	165	646	484	316	261
21.0	1201	57	182	602	452	295	244
22.0	1107	50	199	562	422	276	227
23.0	1127	49	218	525	393	257	213
24.0	1152	48	237	491	367	237	198
25.0	1150	46	240	456	338	218	185
26.0	1144	44	252	421	308	200	172
27.0	1161	43	264	386	278	181	158
28.0	1176	42	276	352	248	162	145
29.0	1160	40	288	313	218	142	131
30.0	1140	38	300	278	188	123	118
31.0	1116	36	315	279	189	124	119
32.0	1088	34	320	280	190	125	120
33.0	1056	32	325	281	191	126	121
34.0	1020	30	330	282	192	127	122
35.0	980	28	334	283	193	128	123
36.0	936	26	336	284	194	129	124
37.0	888	24	338	285	195	130	125
38.0	798	21	340	286	196	131	126
39.0	780	20	345	287	197	132	127
40.0	720	18	350	288	198	133	128

■规格型号:FN6076D螺丝四方架

材 质 : 6082
 连接配件 : M14x105--8.8级
 端口规格 : 600*760mm四方
 端 口 : 50x40mm"圆"型材
 主 管 : \varnothing 50x3mm "O" / "田"
 竖 管 : \varnothing 50x2mm
 斜 管 : \varnothing 30x2mm
 最大安全受力跨度 : 20m-53kg/m 24m-33kg/m

■ FN6076:DSquare Bolt Truss

Alloy Material:6082
 Connectors : M14x105--8.8
 Size : 600*760mm Square
 Connect End : 50x40mm"圆"
 TubeMain tube: \varnothing 50x3mm "O" / "田"
 Vice tube: \varnothing 50x2mm
 Brace tube: \varnothing 30x2mm
 Max Load /Span: 20m-53kg/m 24m-33kg/m



■ 规格型号:FN5276D螺丝四方架

材 质 : 6082
 连接配件 : M14x105--8.8级
 端口规格 : 520*760mm四方
 端 口 : 50x40mm"圆"型材
 主 管 : \varnothing 50x3mm "O" / "田"
 竖 管 : \varnothing 50x2mm
 斜 管 : \varnothing 30x2mm
 最大安全受力跨度 : 20m-53kg/m 24m-33kg/m

■ FN5276DSquare Bolt Truss

Alloy Material:6082
 Connectors : M14x105--8.8
 Size : 520*760mm Square
 Connect End : 50x40mm"圆"
 TubeMain tube: \varnothing 50x3mm "O" / "田"
 Vice tube: \varnothing 50x2mm
 Brace tube: \varnothing 30x2mm
 Max Load /Span: 20m-53kg/m 24m-33kg/m



■规格型号:FN4560D螺丝四方架

材 质 : 6082
 连接配件 : M14x105--8.8级
 端口规格 : 450*600mm
 端 口 : 50x40mm"圆"型材
 主 管 : \varnothing 50x3mm "O" / "田"
 竖 管 : \varnothing 50x2mm
 斜 管 : \varnothing 30x2mm
 最大安全受力跨度 : 18m-49kg/m 22m-30kg/m

■ FN4560DSquare Bolt Truss

Alloy Material:6082
 Connectors : M14x105--8.8
 Size : 450*600mm Square
 Connect End : 50x40mm"圆"
 TubeMain tube: \varnothing 50x3mm "O" / "田"
 Vice tube: \varnothing 50x2mm
 Brace tube: \varnothing 30x2mm
 Max Load /Span: 18m-49kg/m 22m-30kg/m



■ 规格型号:FN4060D螺丝四方架

材 质 : 6082
 连接配件 : M14x75--8.8级
 端口规格 : 400*600mm四方
 端 口 : 50x25mm*目*型材
 主 管 : \varnothing 50x3mm "O" / "田"
 竖 管 : \varnothing 50x2mm
 斜 管 : \varnothing 30x2mm
 最大安全受力跨度 : 18m-45kg/m 22m-27kg/m

■ FN4060D Square Bolt Truss

Alloy Material:6082
 Connectors : M14x75--8.8
 Size : 400*600mm Square
 Connect End : 50x25mm*目*
 TubeMain tube: \varnothing 50x3mm "O" / "田"
 Vice tube: \varnothing 50x2mm
 Brace tube: \varnothing 30x2mm
 Max Load /Span: 18m-45kg/m 22m-27kg/m

■ 规格型号:FN450A螺丝四方架

材 质 : 6082
 连接配件 : M14x75--8.8级
 端口规格 : 450*450mm四方
 端 口 : 50x25mm*目*型材
 主 管 : \varnothing 50x3mm
 竖 管 : \varnothing 30x2mm
 斜 管 : \varnothing 30x2mm
 最大安全受力跨度 : 14m-57kg/m 18m-38kg/m

■ FN450D Square Bolt Truss

Alloy Material:6082
 Connectors : M14x75--8.8
 Size : 450*450mm Square
 Connect End : 50x25mm*目*
 TubeMain tube: \varnothing 50x3mm
 Vice tube: \varnothing 30x2mm
 Brace tube: \varnothing 30x2mm
 Max Load /Span: 14m-57kg/m 18m-38kg/m



■ 规格型号:FN450B螺丝四方架

材 质 : 6082
 连接配件 : M14x105--8.8级
 端口规格 : 450*450mm四方
 端 口 : 50x40mm*田*型材
 主 管 : \varnothing 50x3mm "O" / "田"
 竖 管 : \varnothing 50x2mm
 斜 管 : \varnothing 30x2mm
 最大安全受力跨度 : 14m-60kg/m 18m-40kg/m

■ FN450B Square Bolt Truss

Alloy Material:6082
 Connectors : M14x105--8.8
 Size : 450*450mm Square
 Connect End : 50x40mm*田*
 TubeMain tube: \varnothing 50x3mm "O" / "田"
 Vice tube: \varnothing 50x2mm
 Brace tube: \varnothing 30x2mm
 Max Load /Span: 14m-60kg/m 18m-40kg/m



■ 规格型号:FN400A螺丝四方架

材 质 : 6082
 连接配件 : M14x75--8.8级
 端口规格 : 400*400mm四方
 端 口 : 50x25mm*目*型材
 主 管 : \varnothing 50x3mm
 竖 管 : \varnothing 38x2mm
 斜 管 : \varnothing 30x2mm
 最大安全受力跨度 : 12m-77kg/m 16m-43kg/m

■ FN400A Square Bolt Truss

Alloy Material:6082
 Connectors : M14x75--8.8
 Size : 400*400mm Square
 Connect End : 50x25mm*目*
 TubeMain tube: \varnothing 50x3mm
 Vice tube: \varnothing 38x2mm
 Brace tube: \varnothing 30x2mm
 Max Load /Span: 12m-77kg/m 16m-43kg/m

■ 规格型号:FN400B螺丝四方架

材 质 : 6082
 连接配件 : M14x75--8.8级
 端口规格 : 400*400mm四方
 端 口 : 50x25mm*目*型材
 主 管 : \varnothing 50x3mm
 竖 管 : \varnothing 30x2mm
 斜 管 : \varnothing 30x2mm
 最大安全受力跨度 : 12m-77kg/m 16m-43kg/m

■ FN400B Square Bolt Truss

Alloy Material:6082
 Connectors : M14x75--8.8
 Size : 400*400mm Square
 Connect End : 50x25mm*目*
 TubeMain tube: \varnothing 50x3mm
 Vice tube: \varnothing 30x2mm
 Brace tube: \varnothing 30x2mm
 Max Load /Span: 12m-77kg/m 16m-43kg/m



■ 规格型号:FN3040D螺丝四方架

材 质 : 6082
 连接配件 : M14x75--8.8级
 端口规格 : 300*400mm四方
 端 口 : 50x25mm*目*型材
 主 管 : \varnothing 50x3mm
 竖 管 : \varnothing 30x2mm
 斜 管 : \varnothing 30x2mm
 最大安全受力跨度 : 12m-77kg/m 16m-43kg/m

■ FN3040D Square Bolt Truss

Alloy Material:6082
 Connectors : M14x75--8.8
 Size : 300*400mm Square
 Connect End : 50x25mm*目*
 TubeMain tube: \varnothing 50x3mm
 Vice tube: \varnothing 30x2mm
 Brace tube: \varnothing 30x2mm
 Max Load /Span: 12m-77kg/m 16m-43kg/m



■ 规格型号:FN300D螺丝四方架

材 质 : 6082
 连接螺栓 Screw : M14x75--8.8级
 端 口 : 300*300mm四方
 端 口 : 50x25mm *目*型材
 主 管 : \varnothing 50x3mm
 竖 管 : \varnothing 25x2mm
 斜 管 : \varnothing 25x2mm
 最大安全受力跨度 : 10m-66kg/m 12m-46kg/m

■ FN300D Square Bolt Truss

Alloy Material:6082
 Connectors : M14x75--8.8
 Size : 300*300mm Square
 Connect End : 50x25mm *目*
 TubeMain tube: \varnothing 50x3mm
 Vice tube: \varnothing 25x2mm
 Brace tube: \varnothing 25x2mm
 Max Load /Span: 10m-66kg/m 12m-46kg/m

■ 规格型号:FN300DA螺丝四方架

材 质 : 6082
 连接配件 : M14x75--8.8级
 端口规格 : 300*300mm四方
 端 口 : 50x25mm *目*型材
 主 管 : \varnothing 50x3mm
 竖 管 : \varnothing 30x2mm
 斜 管 : \varnothing 25x2mm
 最大安全受力跨度 : 10m-66kg/m 12m-46kg/m

■ FN300DA Square Bolt Truss

Alloy Material:6082
 Connectors : M14x75--8.8
 Size : 300*300mm Square
 Connect End : 50x25mm *目*
 TubeMain tube: \varnothing 50x3mm
 Vice tube: \varnothing 30x2mm
 Brace tube: \varnothing 25x2mm
 Max Load /Span: 10m-66kg/m 12m-46kg/m



■ 规格型号:FN250D螺丝四方架

材 质 : 6082
 连接螺栓 Screw : M14x75--8.8级
 端 口 : 250*250mm四方
 端 口 : 50x25mm *目*型材
 主 管 : \varnothing 50x3mm
 竖 管 : \varnothing 25x2mm
 斜 管 : \varnothing 20x2mm
 最大安全受力跨度 : 10m-52kg/m 12m-34kg/m

■ FN250D Square Bolt Truss

Alloy Material:6082
 Connectors : M14x75--8.8
 Size : 250*250mm Square
 Connect End : 50x25mm *目*
 TubeMain tube: \varnothing 50x3mm
 Vice tube: \varnothing 25x2mm
 Brace tube: \varnothing 20x2mm
 Max Load /Span: 10m-52kg/m 12m-34kg/m



■ 规格型号:FN400S螺丝四方架

材 质 : 6082
 连接螺栓 Screw : M16*45MM-8.8级
 端 口 : 12MM三角铝板
 端 口 : 400*400mm四方架
 主 管 : \varnothing 50x3mm
 竖 管 : \varnothing 50*2MM
 斜 管 : \varnothing 25x2mm
 最大安全受力跨度 : 14m-55kg/m 16m-35kg/m

■ FN400D Square Bolt Truss

Alloy Material:6082
 Connectors : M16*45MM-8.8
 Size : 400*400mm Square
 Connect End : 12mm triangular aluminum plate
 TubeMain tube: \varnothing 50x3mm
 Vice tube: \varnothing 50*2MM
 Brace tube: \varnothing 25x2mm
 Max Load /Span: 14m-55kg/m 16m-35kg/m



■ 规格型号:FN4060S螺丝四方架

材 质 : 6082
 连接螺栓 Screw : M16*45MM-8.8级
 端 口 : 12MM三角铝板
 端 口 : 400*600mm四方架
 主 管 : \varnothing 50x3mm
 竖 管 : \varnothing 50*2MM
 斜 管 : \varnothing 25x2mm
 最大安全受力跨度 : 20m-35kg/m 22m-24kg/m

■ FN4060D Square Bolt Truss

Alloy Material:6082
 Connectors : M16*45MM-8.8
 Size : 400*600mm Square
 Connect End : 12mm triangular aluminum plate
 TubeMain tube: \varnothing 50x3mm
 Vice tube: \varnothing 50*2MM
 Brace tube: \varnothing 25x2mm
 Max Load /Span: 20m-35kg/m 22m-24kg/m



■ 规格型号:FN305SA螺丝四方架

材 质 : 6082
 连接配件 : M16x50--8.8级
 端口规格 : 305*305mm四方
 端 口 : 100x35x10mm*L*型材
 主 管 : \varnothing 50x3mm
 竖 管 : \varnothing 50x2mm
 斜 管 : \varnothing 25x2mm
 最大安全受力跨度 : 10m-66kg/m 12m-46kg/m

■ FN305LA Square Bolt Truss

Alloy Material:6082
 Connectors : M16x50--8.8
 Size : 305*305mm Square
 Connect End : 100x35x10mm*L*
 TubeMain tube: \varnothing 50x3mm
 Vice tube: \varnothing 50x2mm
 Brace tube: \varnothing 25x2mm
 Max Load /Span: 10m-66kg/m 12m-46kg/m



■ 规格型号:FN305LB螺丝四方架

材 质 : 6082
 连接配件 : M16x50--8.8级
 端口规格 : 305*305mm四方
 端 口 : 100x35x10mm*L*型材
 主 管 : \varnothing 50x3mm
 竖 管 : \varnothing 50x2mm
 斜 管 : \varnothing 25x2mm
 最大安全受力跨度 : 10m-66kg/m 12m-46kg/m

■ FN305LB Square Bolt Truss

Alloy Material:6082
 Connectors : M16x50--8.8
 Size : 305*305mm Square
 Connect End : 100x35x10mm*L*
 TubeMain tube: \varnothing 50x3mm
 Vice tube: \varnothing 50x2mm
 Brace tube: \varnothing 25x2mm
 Max Load /Span: 10m-66kg/m 12m-46kg/m

■ 规格型号:FN410L螺丝四方架

材 质 : 6082
 连接配件 : M16x50--8.8级
 端口规格 : 410*410mm四方
 端 口 : 100x35x10mm*L*型材
 主 管 : \varnothing 50x3mm
 竖 管 : \varnothing 50x2mm
 斜 管 : \varnothing 30x2mm
 最大安全受力跨度 : 12m-77kg/m 12m-43kg/m

■ FN410L Square Bolt Truss

Alloy Material:6082
 Connectors : M16x50--8.8
 Size : 410*410mm Square
 Connect End : 100x35x10mm*L*
 TubeMain tube: \varnothing 50x3mm
 Vice tube: \varnothing 50x2mm
 Brace tube: \varnothing 30x2mm
 Max Load /Span: 12m-77kg/m 16m-43kg/m



■ 规格型号:FN6080L螺丝四方架

材 质 : 6082
 连接配件 : M16x50--8.8级
 端口规格 : 600*800MM四方
 端 口 : 120*35*12mm "L" 型铝材
 主 管 : \varnothing 50x3mm
 竖 管 : \varnothing 50x2mm
 斜 管 : \varnothing 25x2mm
 最大安全受力跨度 : 20m-60kg/m 28m-30kg/m

■ FN6080L Square Bolt Truss

Alloy Material:6082
 Connectors : M16x50--8.8
 Size : 600*800MM Square
 Connect End : 120*35*12mm "L" Aluminum profile
 TubeMain tube: \varnothing 50x3mm "O" / "Φ"
 Vice tube: \varnothing 50x2mm
 Brace tube: \varnothing 25x2mm
 Max Load /Span: 20m-60kg/m 28m-30kg/m



■ 规格型号:FN4060L螺丝四方架

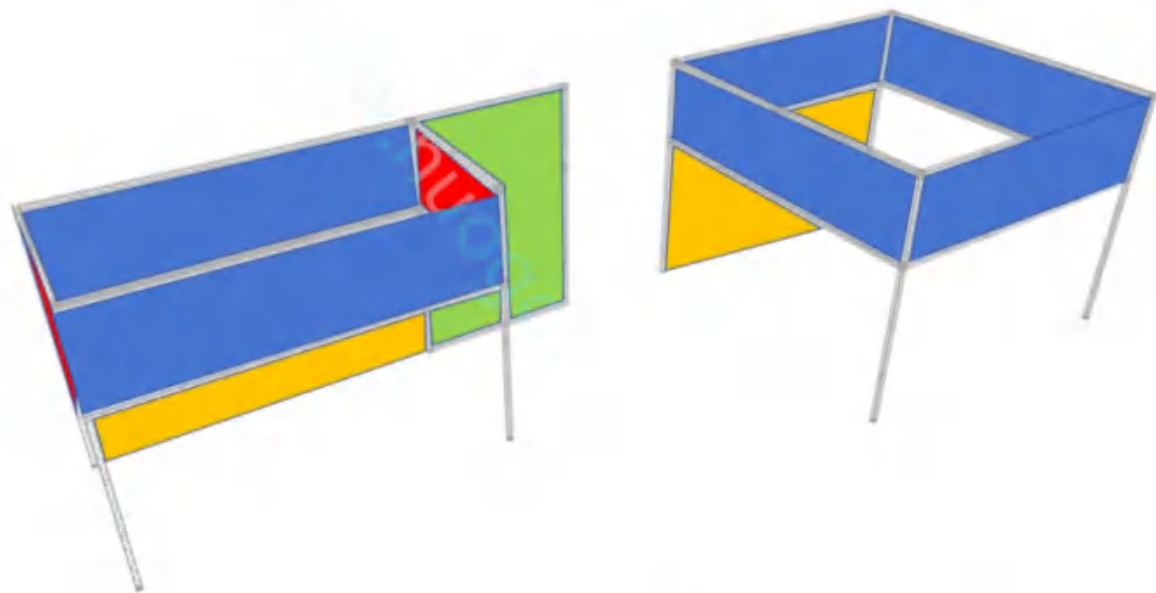
材 质 : 6082
 连接配件 : M20x50--8.8级
 端口规格 : 400*600mm四方
 端 口 : 100x35x10mm*L*型材
 主 管 : \varnothing 50x3mm "O" / "Φ"
 竖 管 : \varnothing 30x2mm
 斜 管 : \varnothing 30x2mm
 最大安全受力跨度 : 18m-49kg/m 22m-30kg/m

■ FN4060L Square Bolt Truss

Alloy Material:6082
 Connectors : M20x50--8.8
 Size : 400*600mm Square
 Connect End : 100x35x10mm*L*
 TubeMain tube: \varnothing 50x3mm "O" / "Φ"
 Vice tube: \varnothing 30x2mm
 Brace tube: \varnothing 30x2mm
 Max Load /Span: 18m-49kg/m 22m-30kg/m



> 背景小桁架. Background truss

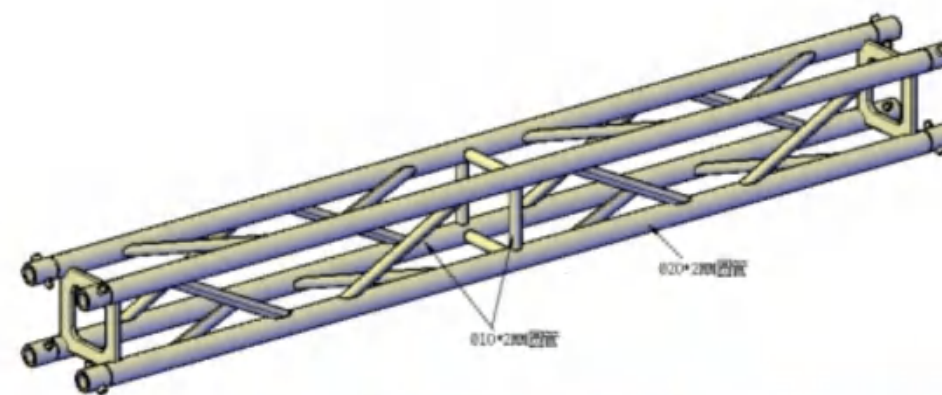
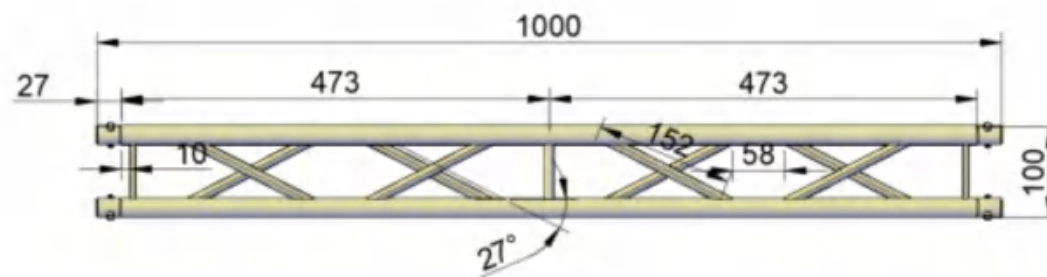


规格型号N200D螺丝四方架

材质: 6082
 连接配件: 15MM铝抽心
 端口规格: 100*100MM四方架
 端 口: 20MM铝驳接头
 主 管: 20*2MM
 竖 管: 6*2MM
 斜 管: 6*2MM
 最大安全受力跨度: 10m-6kg/m

FG100D Square Bolt Truss

Alloy Material: 6082
 Connectors: 15mm Conical Coupler
 Size: 100*100mm triangle
 Connect End: 20MM
 Tube Main tube: 20*2MM
 Vice tube: 6*2MM
 Brace tube: 6*2MM
 Max Load /Span: 10m-6kg/m



Aluminum plate

Universal block

Black truss

铝板

六面接头

桁架 黑色





■ 规格型号:FG220D 插销四方架

材质: 6082-T6
 端口: 220*220MM四方插销架
 主管: 35*2MM
 副管: 8*2MM

■ EXTERNAL DIMENSION: 220mm

TUBES: 35x2mm;
 BRACES: 8mm;
 MATERIAL: EN-AW 6082-T6
 connecting hardware is included with each truss.

■ 规格型号:FG200D 插销四方架

材质: 6082-T6
 端口: 200*200插销四方架
 主管: 30*2MM
 副管: 16*2MM

■ EXTERNAL DIMENSION: 220mm

TUBES: 30x2mm;
 BRACES: 16*2mm;
 MATERIAL: EN-AW 6082-T6
 connecting hardware is included with each truss



■ 规格型号:N200D 螺丝四方架

材质: 6082
 连接配件: M8x30
 端口规格: 200*200mm四方
 规格: 200*200mm四方
 端口: 30x6mm铝板
 主管: 30x2mm
 竖管: 16x1.4mm
 斜管: 16x1.4mm
 最大安全受力跨度: 10m-6kg/m

■ N200D Square Bolt Truss

Alloy Material: 6082
 Connectors: M8x30
 Size: 200*200mm Square
 Connect End: 30x6mm
 TubeMain tube: 30x2mm
 Vice tube: 16x1.4mm
 Brace tube: 16x1.4mm
 Max Load /Span: 10m-6kg/m

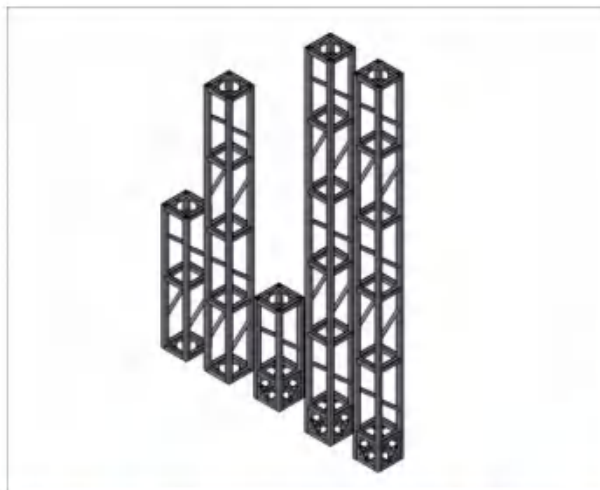


■ FN200F 方管四方架

材质: 6082
 连接配件: M10x40
 端口规格: 200*200mm四方
 端口: 70*10mm铝板
 主管: 25*25*3mm方管
 竖管: 16x1.4mm
 斜管: 16x1.4mm
 最大安全受力跨度: 10m-8kg/m

■ FN200F Square Bolt Truss

Alloy Material: 6082
 Connectors: M10x40
 Size: 200*200mm Square
 Connect End: 70*10mm
 TubeMain tube: 25*25*3mm
 Vice tube: 16x1.4mm
 Brace tube: 16x1.4mm
 Max Load /Span: 10m-8kg/m



■ 规格型号:N200DL螺丝四方架

材质: 6082
 连接配件: M10x40
 端口规则: 200*200mm四方
 端口: 45x8mm铝板
 主管: 30x3mm/30x2
 竖管: 16x1.4mm
 斜管: 16x1.4mm
 最大安全受力跨度: 10m-kg/m

■ N200DL Square Bolt Truss

Alloy Material: 6082
 Connectors: M10x40
 Size: 200*200mm Square
 Connect End: 45x8mm
 TubeMain tube: 30x3mm/ 30x2
 Vice tube: 16x1.4mm
 Brace tube: 16x1.4mm
 Max Load /span: 10m-8kg/m

NEW! 专利产品!

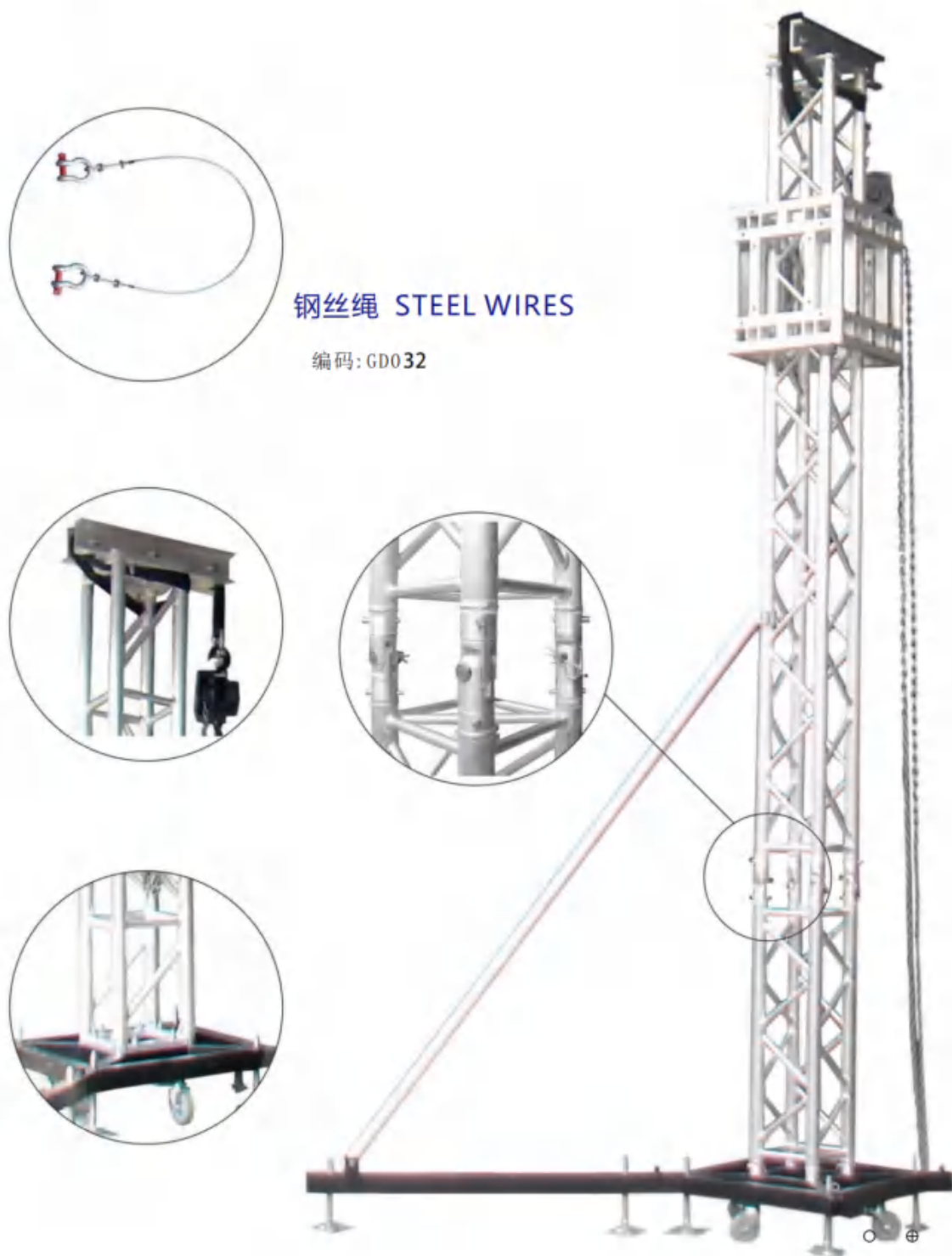
■ 规格型号:N200DF方管桁架

材质: 6082
 连接配件: M8x25
 端口规格: 200*200mm四方
 端口: 30x30x5mm*L*型材
 主管: 30x30x2mm
 竖管: 30x30x2mm
 最大安全受力跨度: 10m-8kg/m
 产品特点: 每条架子两端都带有接头, 方便使用, 无需单独配备接头

■ N200DF Square Bolt Truss

Alloy Material: 6082
 Connectors: M8x25
 Size: 200*200mm Square
 Connect End: 30x30x5mm*L*
 TubeMain tube: 30x30x2mm
 Vice tube: 30x30x2mm
 Max Load /Span: 10m-8kg/m
 产品特点: 每条架子两端都带有接头, 方便使用, 无需单独配备接头

> 立柱系统-Pillar system



> 配件.Assessories

<p>火箭脚 Outrigger</p> <p>编码:F001</p>	<p>顶部部分 Top Section</p> <p>编码:F011</p>	<p>顶部部分 Top Section</p> <p>编码:F012</p>
<p>编码: F002</p> <p>斜撑 Stabilizer</p>	<p>编码: F009</p> <p>方套 Sleeve Block</p>	<p>编码: F010</p> <p>方套 Sleeve Block</p>
<p>编码: F003</p> <p>活动转接头 Activity adapter</p>	<p>编码: F007</p> <p>底座+喷嘴 Base+nozzle</p>	<p>编码: F008</p> <p>钢底座 Ballast Base</p>
<p>编码: F004</p> <p>双层铝底板 Aluminum base plate</p>	<p>编码: F005</p> <p>双层铝底板 Aluminum base plate</p>	<p>编码: F006</p> <p>钢底座 Steel base</p>

> 立柱系统-Pillar system



钢底座 Steel base	底座+接嘴 Base+nozzle
火箭脚 Outrigger	电动葫芦 Hoist MHO1
斜撑 Stabilizer	铝合金桁架 Aluminum truss
顶部铝滑轮 Top Section	型吊索 sling
方套 Sleeve Block	电机支架 Bracket of Motor
活动转接头 Activity adapter	铁塔安全导线 tower secure wire

> 配件.Assessories

TOWER SYSTEM

钢底座 Steel base 编码: F006 	顶部铝滑轮 Top Section 编码: F011 	顶部铝滑轮 Top Section 编码: F012 
火箭脚 Outrigger 编码: F001 	斜撑 Stabilizer 编码: F002 	加固底座 Reinforced base 编码: F008 
电动葫芦 Hoist MHO1 编码: H013 	电机支架 Bracket of Motor 编码: H014 	方套 Sleeve Block 编码: F010 
活动转接头 Activity adapter 编码: F003 	型吊索 sling 编码: H010 	铁塔安全导线 tower secure wire 编码: H001 

> 吊挂系统 Hang System



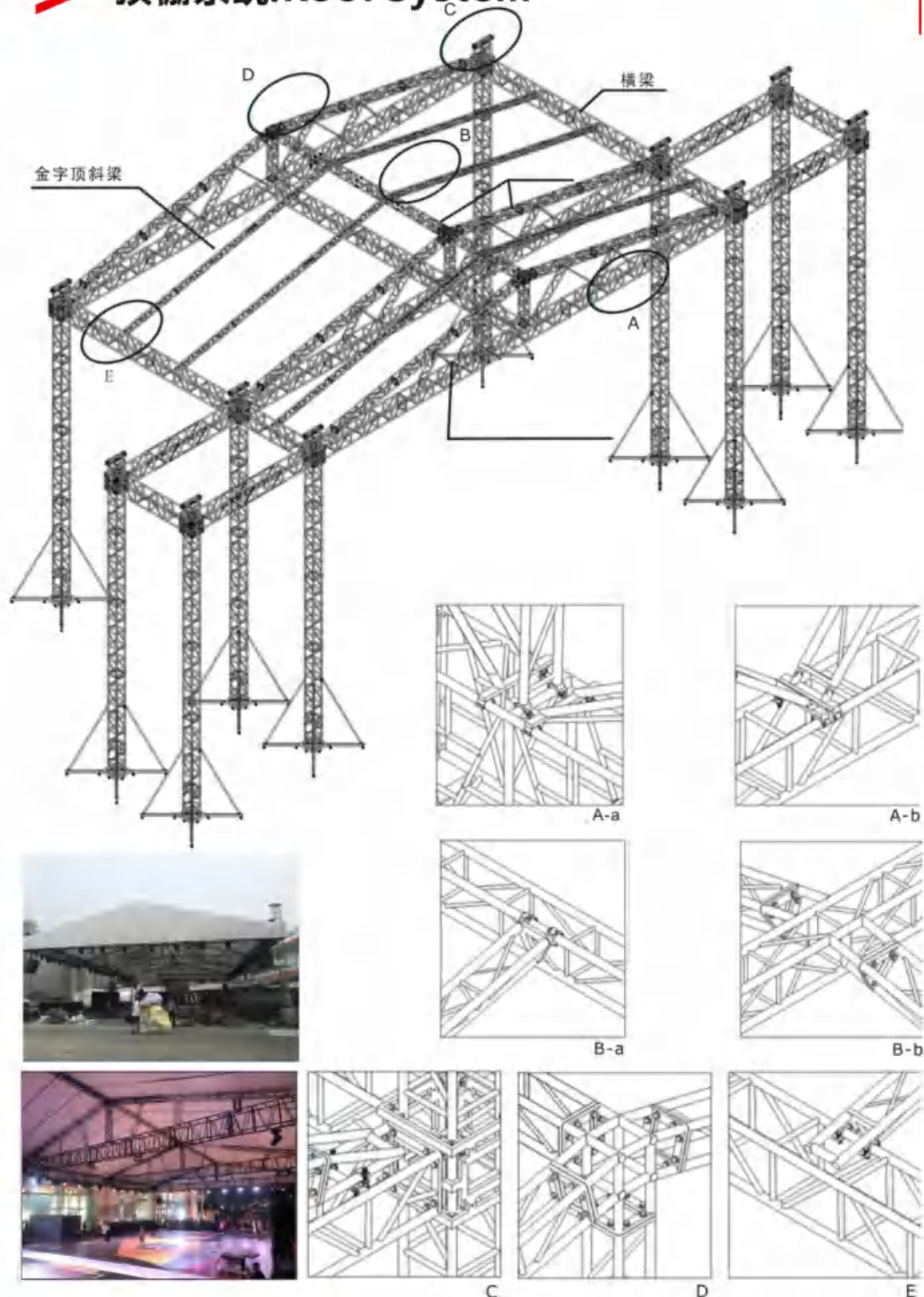
> 配件.Assessories



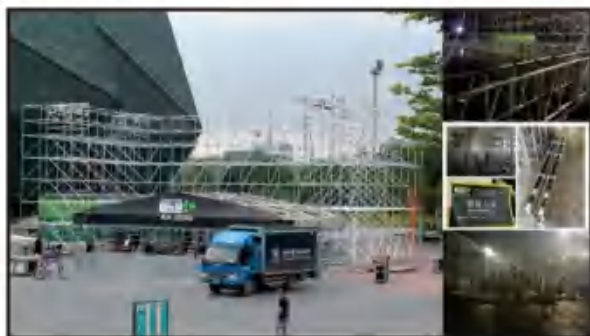
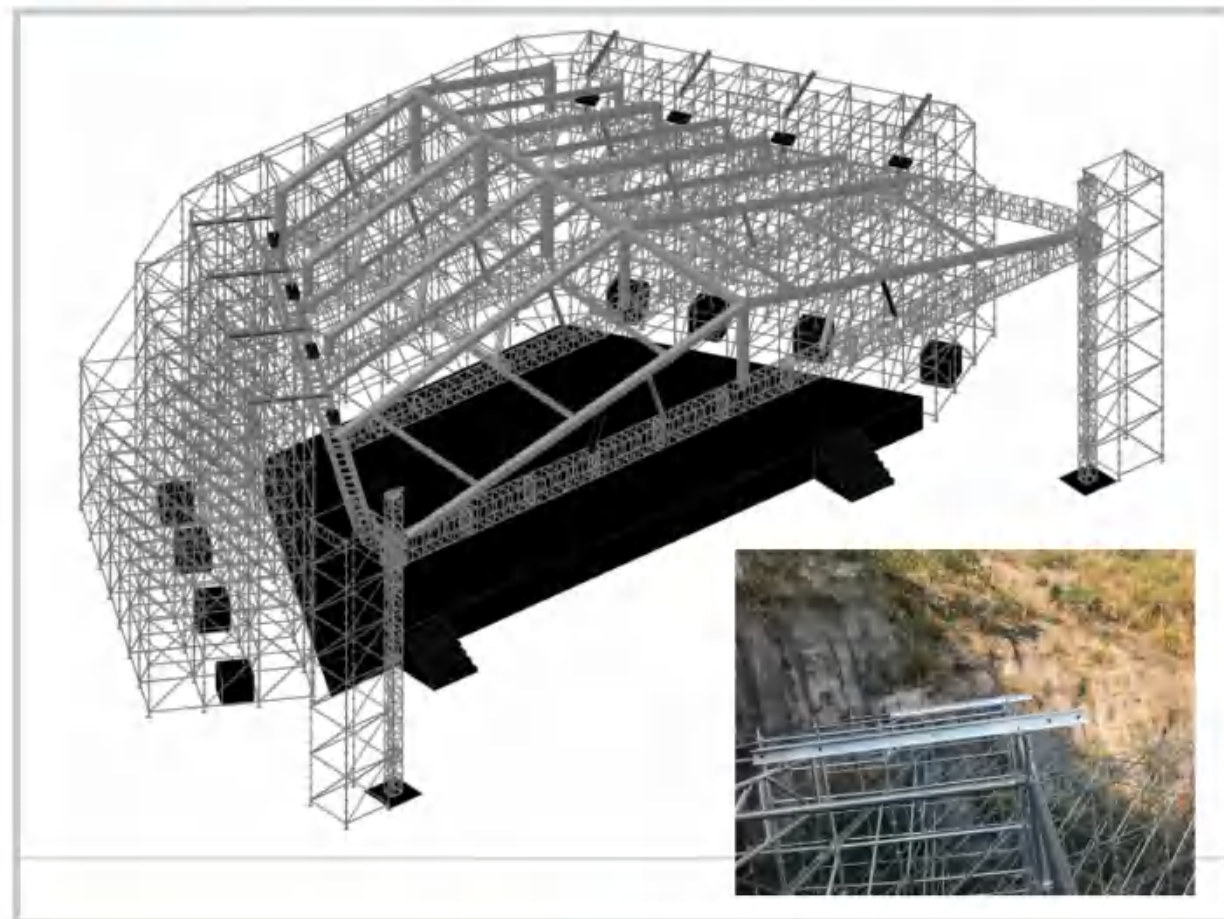
> 顶棚系统.Roof System



> 顶棚系统.Roof System



> 雷亚架顶棚系统 Raya frame ceiling system



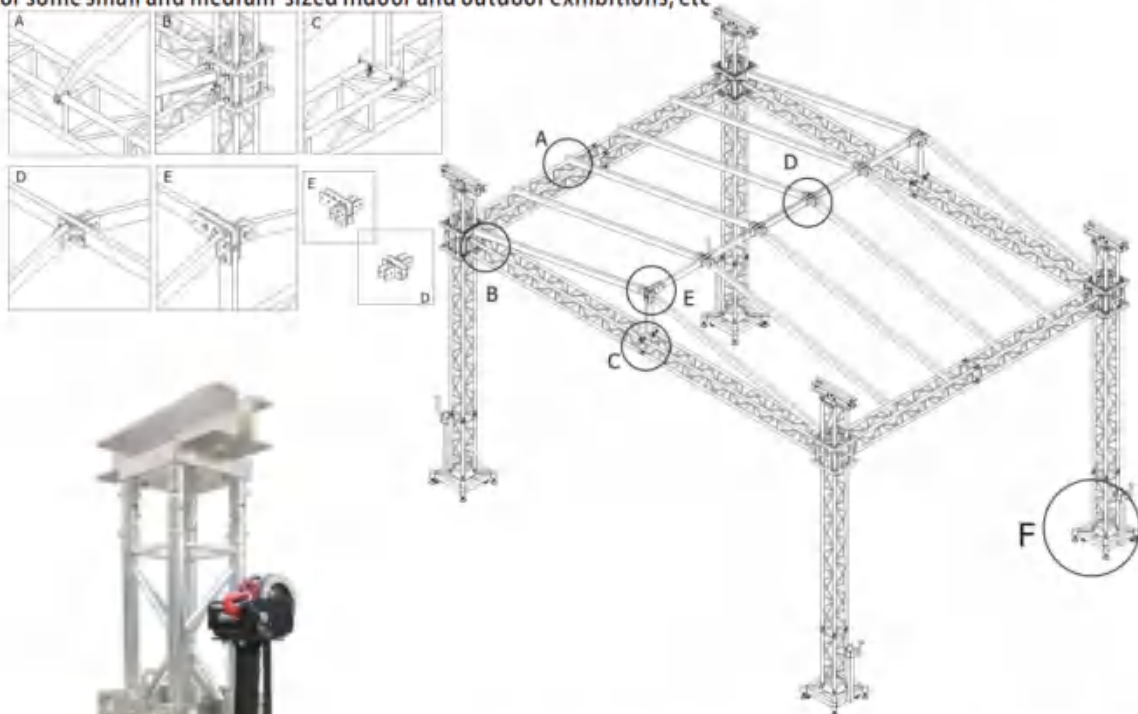
顶棚系统.Roof System



手摇工程架:

方案名: 手摇葫芦轻型工程架
 工程架立柱: 300mm系列升降系统
 横梁: 300mm系列四方架
 顶棚: 100*50铝方通
 方案最大尺寸可做到: 10*10*6M
 葫芦受重: 1吨-2吨手动/电动
 工程架采用: FN300D的架子,
 它具有.造型独特:常规搭建简单 快捷 少横梁和顶部中
 间的梁,使整个工程架更加节约运输 存储 适用于一些
 中、小型的室内外展会等

SHand cranked engineering frame:
 Plan Name: Hand Shake Hull Light Engineering Plus
 Engineering frame column: 300mm series lifting system
 Cross beam: 300mm series square frame
 Ceiling: 100*50 aluminum square tube
 The maximum size of the plan can be achieved: 10*10*6M
 Weight of gourd: 1-2 tons, manual/electric
 The engineering frame adopts FN300D frame,
 It has Unique design: simple and fast construction with fewer crossbeams and middle beams at the top, making the entire construction frame more economical for transportation and storage. Suitable for some small and medium-sized indoor and outdoor exhibitions, etc



这是轻型桁架,用手拉葫芦。塔身采用300*300mm方桁架,梁身采用300*300方桁架。角锥采用100*50mm见方的底座,由卡箍连接。最大的尺寸是10*10*6m,每台起重机可装载1400磅。

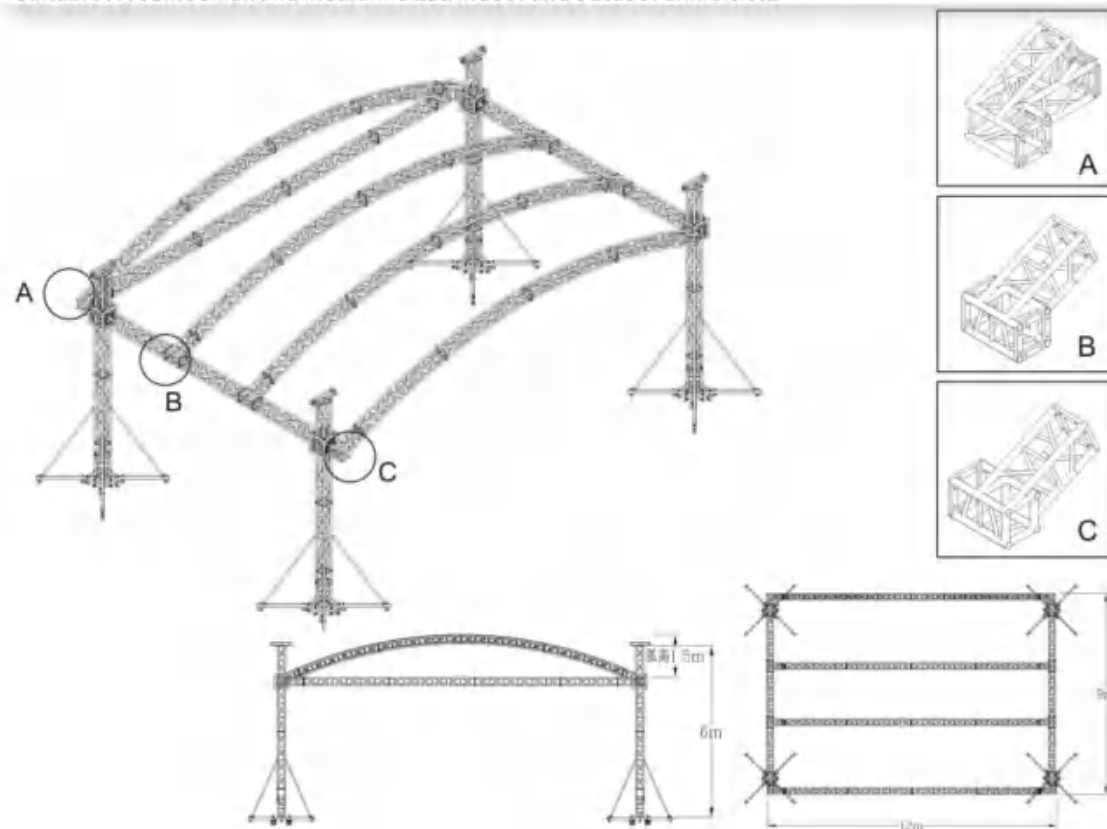
This is the Light-duty truss, Used handle hoist. Tower used 300*300mm Square truss, Beam used 300*300 Square truss. Pyramidal used 100*50mm Square base, connected by the clamp. The biggest size is 10*10*6m. The each hoist which can load 1400 Pound.



圆弧顶轻型工程架:

方案名:圆弧顶轻型
 工程架立柱:300mm系列升降系统
 横梁:300mm系列四方架
 顶棚:300mm系列四方架
 方案最大尺寸可做到:根据场地情况定单个
 葫芦受重:1吨-2吨手动/电动
 圆弧顶架子用FN300D的架子,它具有.
 造型独特:常、搭建简单 快捷 少了一条横梁和顶部中间的
 梁,使整个工程架更加好装灯,挂帆布,适用于一些
 中、小型的室内外展会等

Steel base circular arc top lightweight engineering frame:
 Plan Name: Circular Arc Top Lightweight
 Engineering frame column: 300mm series lifting system
 Cross beam: 300mm series square frame
 Ceiling: 300mm series square frame
 The maximum size of the plan can be determined according to the site conditions
 Weight of gourd: 1-2 tons, manual/electric
 The arc-shaped top shelf uses the FN300D shelf, which has
 Unique design: The construction is simple and fast, with the absence of a crossbeam and the middle beam at the top, making the entire engineering frame easier to install lights and hang canvas, suitable for some small and medium-sized indoor and outdoor exhibitions



> Engineering column support

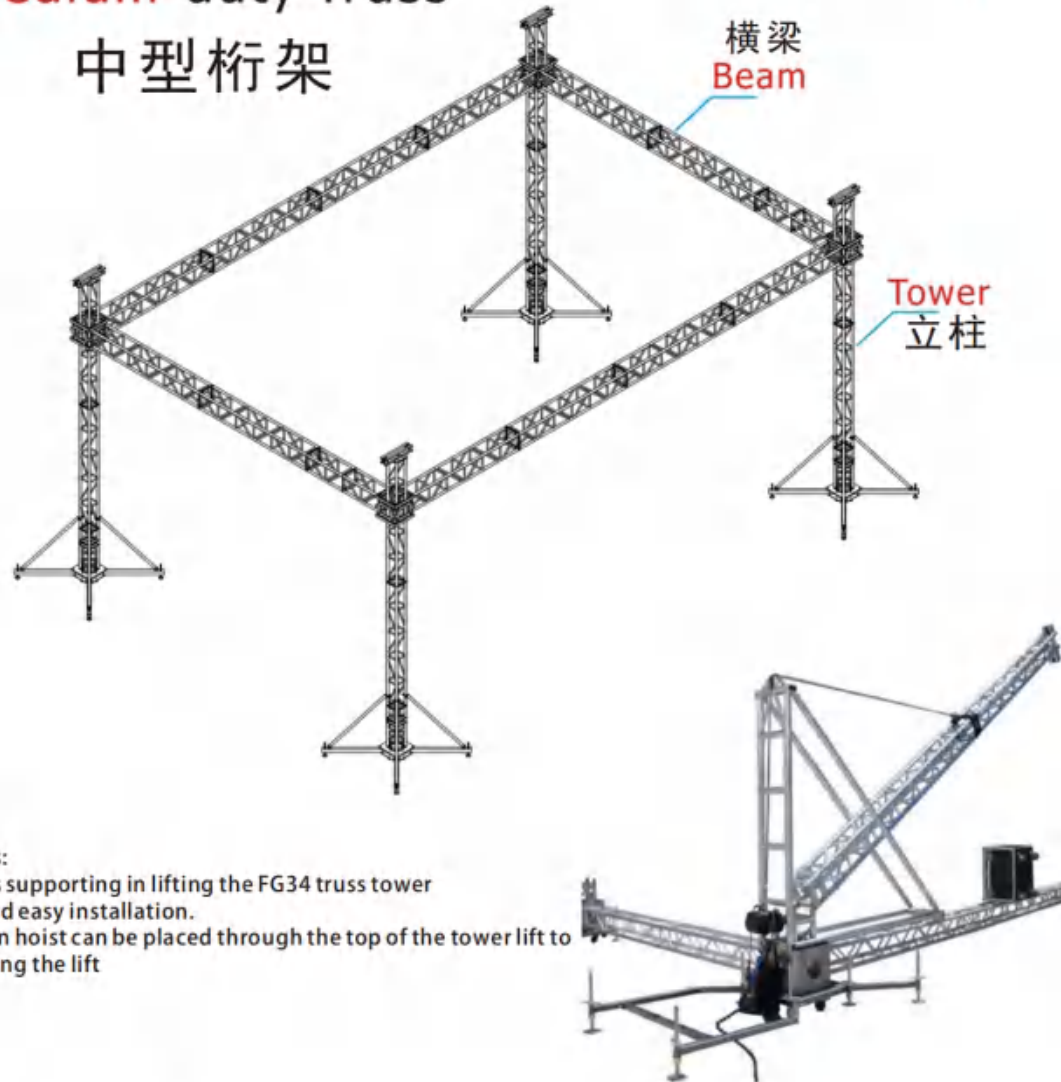


工程起柱架当立柱高于6M时，您可以选着使用“起柱架起柱架”通过葫芦将立柱竖起来，每套工程架只需要一套“起柱架”当立柱高于6m时，通常情况下靠人力去把立柱立起来，当立柱越高或者立柱规格越大时需要的人也就越多。虽然立柱有设计底座架或者活动转接头，可仍然是件非常辛苦的事情尤其在工程做完立柱的时候，同时还需要所有参与的人员配合的非常好才可避免安全问题的发生当您选择用“起柱架”时这些问题都将不再是问题。如列图所示只需要将葫芦与“起柱架”接好，通过葫芦将立柱拉起来，安全可靠，整个过程您只需要两个人就能完成，将立柱升好后即可把“起柱架”撤走，一套工程只需要一套起柱架。

Features:
Provides supporting in lifting the FG34 truss tower
Quick and easy installation.
The chain hoist can be placed through the top of the tower lift to supporting the lift

Medium-duty Truss

中型桁架



Features:
Provides supporting in lifting the FG34 truss tower
Quick and easy installation.
The chain hoist can be placed through the top of the tower lift to supporting the lift

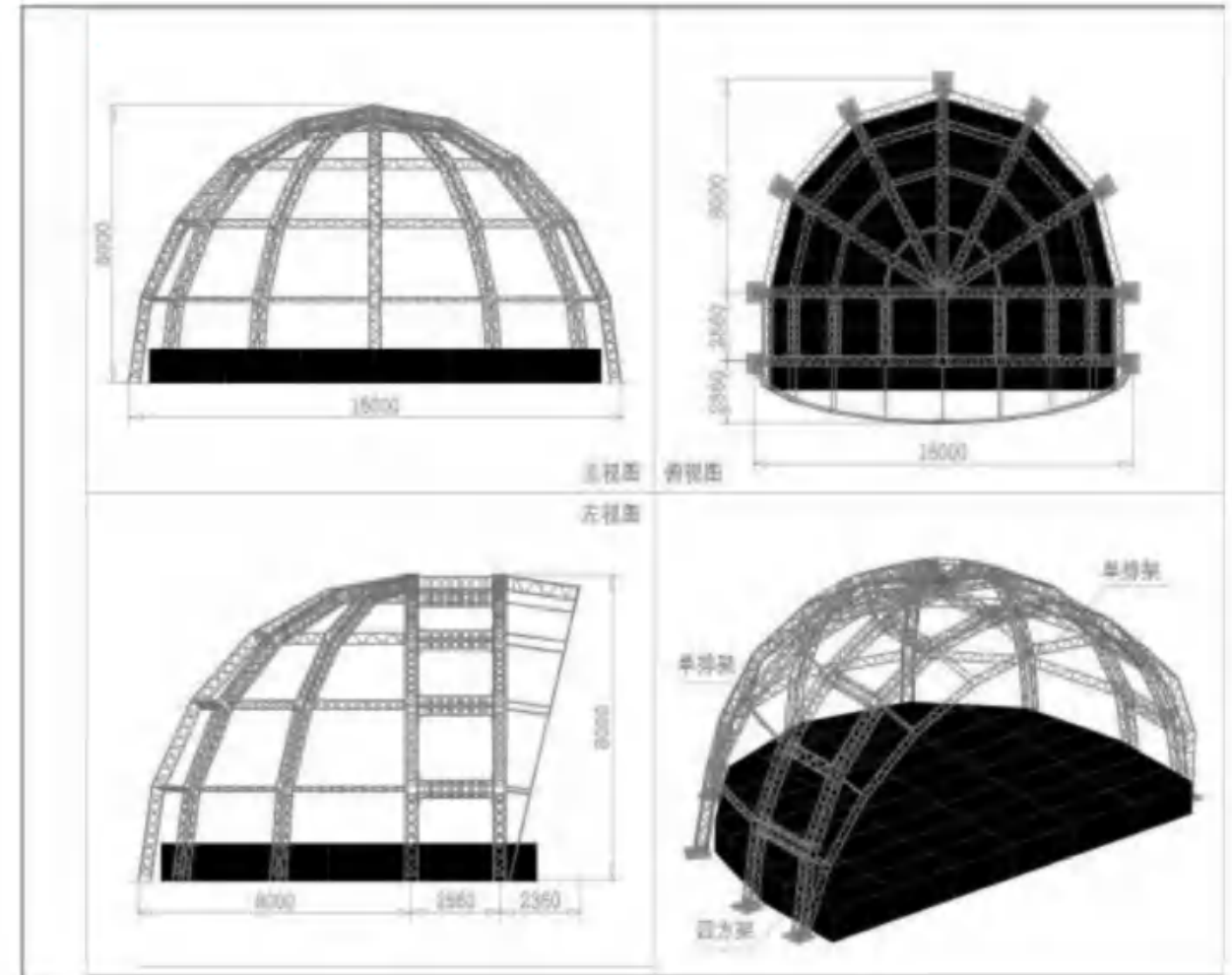
> 异形屋顶结构 Irregular roof structure



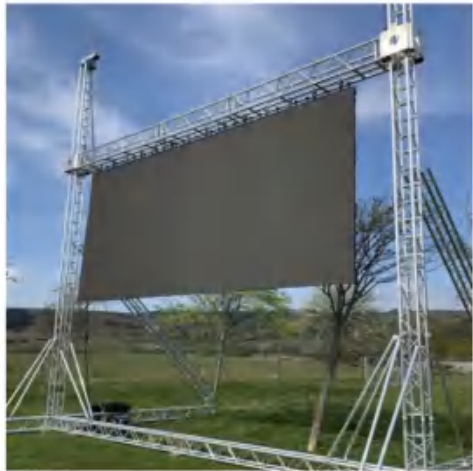
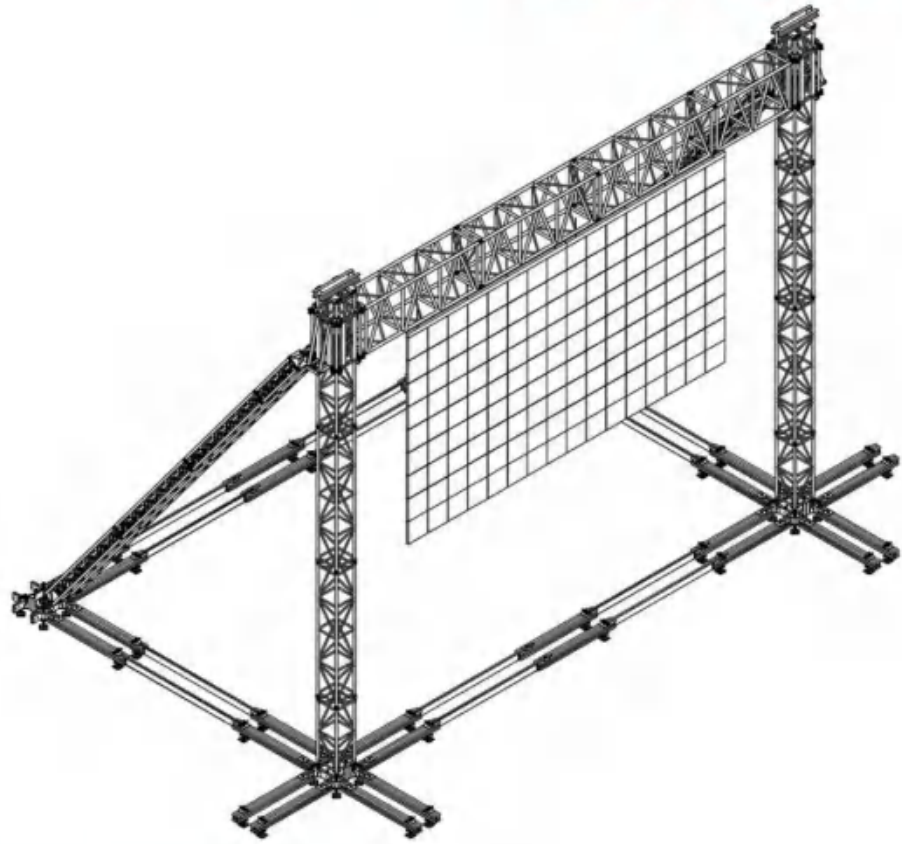
SYSTEM DESCRIPTION

The Tunnel Roof is a hinged truss based structure with an eye on beauty and strength.

The Tunnel Roof consist of standard FG50 straight truss sections and carriers great features like an impressive free clearance of 9m(30ft)and an integrated cantilever of ladder truss. Beside this a clamped on keder tent profile on the truss sections for its canopy, guarantees you a full closing and allows you full flexibility in depth.



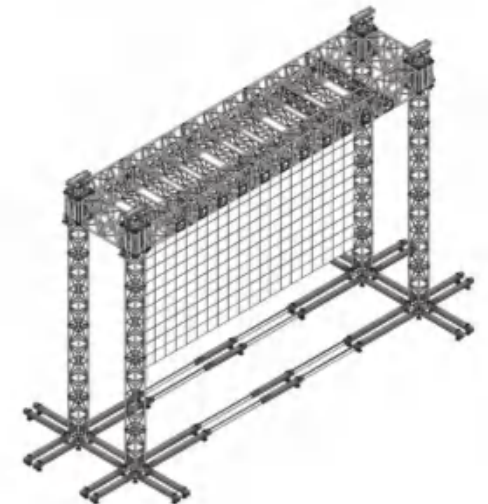
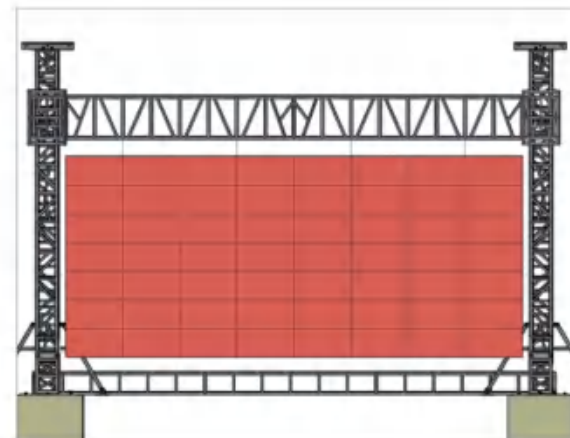
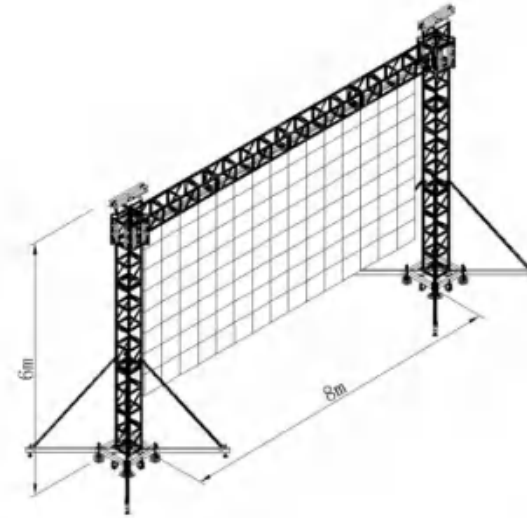
> LED 龙门桁架
LED gantry truss



Facts

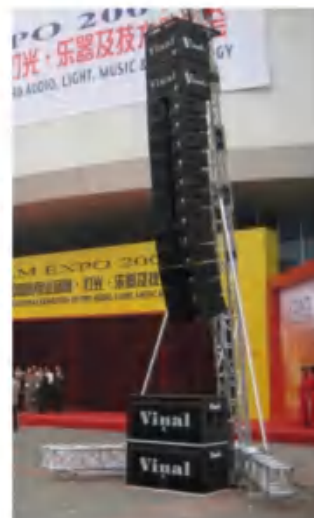
- TÜV approved
- Also available in any non-standard length and shape
- Tolerance free conical connectorsystem
- Available in different sizes

> 各种规格
Specification



> A字架 Speaker and speaker rack

> 扬声器音响架 Speaker and speaker rack



A字架-A-frame

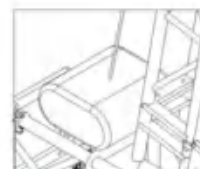
A字架主要用于做活动时用来吊挂线性音响。一般高度12m以内，可吊起约1.1吨它的优势在于只需要一些常规的铝合金架连接在一起，同时只需要很少的配件。

The A-frame is mainly used for hanging linear speakers during activities. Generally within a height of 12m, it can lift about 1.1 tons, and its advantage is that it only requires some conventional aluminum alloy frames to be connected together, Only a few accessories are needed at the same time.



C处放大

Enlarge at point C



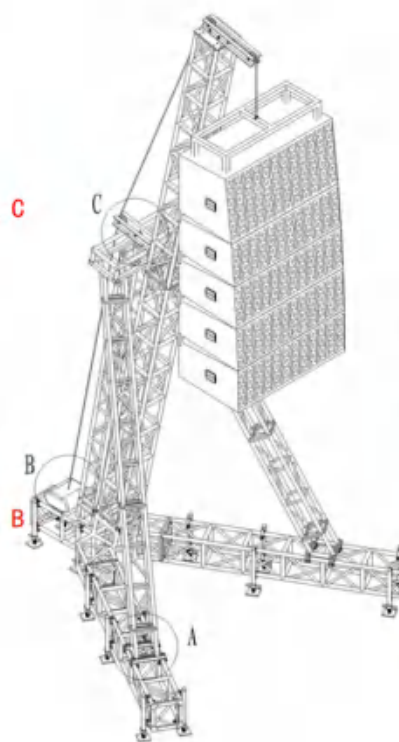
B处放大

Enlarge at point B



A处放大

Enlarge at point A



编号-number	型号-model	料清单-Bill of Material	尺寸-size	总受重-Total weight	
FG38	小型-small-scale	FN300D	300*300 四方螺丝架 -Screw holder	3*3*H:6m	500KG
		FG290D	290*290 四方插销架 -Pin holder		
FG37	中型-medium-sized	FN250D	250*250 螺丝三角架 -Screw tripod	4*4*H:8m	1.0T
		FG290D	290*290 插销三角架 -Pin tripod		
FG50	中型-medium-sized	FN400D	400*400 四方螺丝架-Square screw holder	5*5*H:10m	1.0T
		FG390D	390*390四方插销架-Square plug bracket		

我们可以根据您的需求订做不同的款式及尺寸
We can customize different styles and sizes according to your needs

> 扬声器音响架 Speaker and speaker rack



Facts

- >:TüV approved
- >:Also available in any non-standard
- >:length and shape
- >:Tolerance free conical connector system

AUDIO TOWER SPECIFICATIONS

Height	Load capacity	Truss code
A 6m	1000kg	FG38
B 8m	1000kg	Fg39
C 10m	800kg	FG39

规格型号：H-D

材 质：6082
连接配件：M14x75--8.8级六角螺丝
H片规格：2000*1000mm
1830*1000mm
主 管：∅50x3mm
斜 管：∅30x2mm

H-D

Alloy Material:6082
Connectors: M14x75--8.8
Size: 2000*1000mm
1830*1000mm
TubeMain tube:∅50x3mm
Brace tube:∅30x2mm



> 舞台.Stage

WT001J



■ 规格型号：WT001J 快装舞台

材 质：铝合金+舞台木板

舞台规格：1*2m,

1.2*1.2m

1.22*2.44m

高度调节：0.4-0.6m,0.6-1m可调节

其他高度可按要求定制

舞台框规格：100*50mm

舞 台 脚：直径50mm铝圆管

舞台受力：680kg /平米

■ Model No.: WT001J Fast Stage

Material:Alloy+ Stage Panel

Size: 1*2m,

1.2*1.2m

1.22*2.44m

Alu.Frame:100*50mm

Stand:Dia.50mm alloy tube

Stage Load:680kgs/sqm



WT001



■ 规格型号：WT001 快装舞台

材 质：6082铝合金+18mm专业舞台防滑木板

舞台规格：1*1m, 1*2m
1*1.2m, 1.2*1.2m

高度调节：0.4-0.6m, 0.6-1m可调节
其他高度可按要求定制

脚管直径：φ50x3mm

安装方式：扣式快速安装

运输方式：脚轮

舞台受力：460kg /平米

■ Model No.: WT001 Fast Stage

Material: 6082 Alloy + 18mm Stage Panel

Size: 1*1m, 1*2m

1*1.2m, 1.2*1.2m

Mount: Fast Lock style

Shipping Method: Castor wheels

Stand: Dia. 50mm alloy tube

Stage Load: 460kgs/sqm



Specifications

Size	1000×2000mm
Material	EN-AW 6061-T6
Loading	750kg/m ²
Panel Type	Acrylic / Anti-slip plywood / Plywood with carpet
Legs Type	Telescopic leg / Fixed height leg
Package Size	1020×2020×90mm
Use Range	Indoor / Outdoor

规格:

大小: 1000x2000毫米
材料: 750kg/平方米
面板: 亚克力/防滑胶合板/带地毯的胶合板
封装尺寸: 1220x2040x90毫米
类型腿型: 伸缩腿/固定高度腿
使用范围: 室内/室外



Specifications

Size	1220×2440mm
Material	EN-AW 6061-T6
Loading	1000kg/m ²
Panel Type	Acrylic / Anti-slip plywood / Plywood with carpet
Legs Type	Telescopic leg / Fixed height leg
Package Size	1240×2460×90mm
Use Range	Indoor / Outdoor

规格:

大小: 1220x2440毫米
材料: EN-AW 6061-T6
装载: 1000kg/平方米
面板: 亚克力/防滑胶合板/带地毯的胶合板
封装尺寸: 1240x2460x90毫米
类型腿型: 伸缩腿/固定高度腿
使用范围: 室内/室外

Specifications

Size	1000×1000mm / 1220×1220mm
Material	EN-AW 6061-T6
Loading	750kg/m ²
Panel Type	Acrylic / Anti-slip plywood / Plywood with carpet
Legs Type	Telescopic leg / Fixed height leg
Package Size	1020(1240)×1020(1240)×90mm
Use Range	Indoor / Outdoor

规格:

大小: 1000x1000mm - 1220x1220mm
材料: EN-AW 6061-T6
装载: 750kg/平方米
面板: 亚克力/防滑胶合板/带地毯的胶合板
封装尺寸: 1020x1020x90mm - 1240x1240mm
类型腿型: 伸缩腿/固定高度腿
使用范围: 室内/室外



WT003



Package Size:1020(1240)x1020(1240)x55mm



Package Size:1020(1240)x2020(2460)x55mm

■ 规格型号：WT003 拼装舞台

材 质：6082铝合金+18mm专业舞台防滑木板

舞台规格：1.2*1.2m

1*2m

1.2*2.44m

高度调节：0.4-0.6m,0.6-1m可调节

其他高度可按要求定制

脚管直径：φ50x3mm

安装方式：扣式快速安装

运输方式：脚轮

舞台受力：460kg/平米

■ Model No.: WT003 Assemble Stage

Material:6082 Alloy+18mm Stage Panel

Size:1.2*1.2m,1*2m,1.22*2.44m

Height:0.4-0.6,0.6-1m custom made

Stand:Dia.50x3mm

Mount:Male/female Connect

Shipping Method: Trolley

Stage Load:460kgs/sqm



舞台支架(侧片)

stage brace(ladder)

dimension	1000mm
尺寸	1220mm
	2000mm
	2440mm



楼梯(可调节高度)

Stairs(adjustable height)

Height	400mm-600mm
高度	500mm-800mm
	600mm-1000mm
	700mm-1200mm
	800mm-1400mm
	1000mm-1500mm
	1500mm-2000mm



圆腿(可调节高度)

Round legs(adjustable height)

Height	400mm-600mm
高度	500mm-800mm
	600mm-1000mm
	700mm-1200mm
	800mm-1400mm
	1000mm-1500mm
	1500mm-2000mm



舞台护栏(简单标准)

stage rails (simple standard)

Size	1000x1000mm
大小	1000x1220mm
	1000x2000mm
	1000x2440mm



腿足/脚杯

legs foot

Material	Iron Steel with adjustable
材料	可调节铁钢



舞台平台推车(L型)

Stage deck Dolly(L shape)

Material	Iron Steel 9pcs In One
材料	钢铁9件合一



舞台甲板手推车(经济型)

Stage deck Dolly(economic)

Material	Iron Steel 15pcs In One
材料	钢铁15件合一



固定腿高度



Round legs (fixed height)		
Height	200mm	900mm
高度	300mm	1000mm
	400mm	1100mm
	500mm	1200mm
	600mm	1300mm
	700mm	1400mm
	800mm	1500mm

圆腿(可调节高度)



Round legs(adjustable height)		
Height	300mm-450mm	
高度	400mm-600mm	
	500mm-800mm	
	600mm-1000mm	
	700mm-1200mm	
	800mm-1400mm	

楼梯(可调节高度)



stairs (adjustable height)	
Height	4 Steps
高度	5 Steps
	6 Steps
	7 Steps
	8 Steps

楼梯(固定高度)



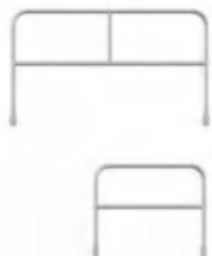
stairs(fixed height)	
Height	2 Steps
高度	3 Steps
	4 Steps

舞台围挡(欧洲标准)



stage rails(Europ standard)		
Size 大小	1000x1000mm	
	1000x1220mm	
	1000x2000mm	
	1000x2440mm	

舞台护栏(亚洲标准)



stage rails (Asia standard)		
Size 大小	1000x1000mm	
	1000x1220mm	
	1000x2000mm	
	1000x2440mm	

楼梯扶手(欧式/简易标准)



stairs rails(europ/simple standard)		
Size 大小	1680x1170x50	
	1880x1470x50	
	2080x1770x50	
	2280x2070x50	
	2480x2370x50	

运输车



Rails transport cart		
Size 大小	230x102x151mm	

舞台平台推车(L型)



Stage deck Dolly(L shape)	
Material	Iron Steel 9pcs In One
材料	9件合一



舞台平台推车(U型)



Stage deck Dolly(U shape)	
Material	Iron Steel 9pcs In One
材料	9件合一

板夹



Board clamp	
Material	Iron Steel with paint
材料	钢铁 开模定制

舞台甲板找平(挂勾)



stage Deck leveling	
Material	aluminum 6061-T6
材料	9件合一

板夹



Rails clamp	
Material	stainless steel
材料	不锈钢

舞台围裙



stage Deck skirting	
Material	fireproof velvet
材料	防火天鹅绒

腿夹(2个和4个腿)



Legs clamp (2 & 4 legs)	
Material	Aluminum 6061-T6
材料	铝合金6061-T6

腿足



legs foot	
Material	Iron Steel with adjustable
材料	可调节铁钢

■ 规格型号：WT004 铝合金折叠舞台

材 质：6082铝合金+18mm专业舞台防滑木板

舞台规格：1*2m

1.2*2.44m

高度调节：0.4-0.6m,0.6-1m可调节

其他高度可按要求定制

脚管直径：φ50x3mm

安装方式：折叠式快速安装

运输方式：运输车

舞台受力：460kg/平米

■ Model No.: WT004 Assemble Stage

Material:6082 Alloy+18mm Stage Panel

Size:1*2m

1.2*2.44m

Height:0.4-0.6,0.6-1m custom made

Stand:Dia.50x3mm

Mount:Fast Folding style

Shipping Method: Transport Trolley

Stage Load:460kgs/sqm



■ 规格型号：WT005 玻璃折叠舞台

材 质：6082铝合金+8+8mm钢化玻璃

舞台规格：1*2m

1.2*2.44m

高度调节：0.4-0.6m,0.6-1m可调节

其他高度可按要求定制

脚管直径：φ50x3mm

安装方式：折叠式快速安装

运输方式：运输车

舞台受力：460kg/平米

■ Model No.: Wt005 Glass Folding Stage

Material:6082 Alloy+8+8mm tempered glass

Size:1*2m

1.2*2.44m

Height:0.4-0.6,0.6-1m custom made

Stand:Dia.50x3mm

Mount:Fast Folding style

Shipping Method: Transport Trolley

Stage Load:460kgs/sqm

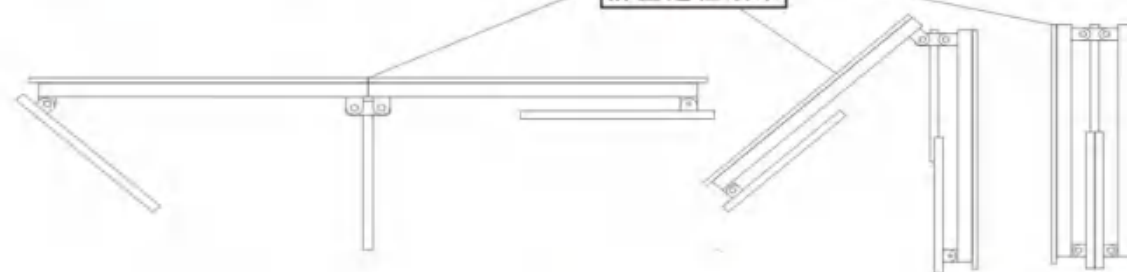
展开效果



WT005除了舞台板外采用全铝制作，舞台可选高密度舞台板或有机玻璃，也可以在舞台上加各种各样的地毯，优点有：安装简单 快捷 运输方便 入库方便 不占多少空间，适用于一些小型的室内、婚庆活动等。

WT005In addition to the stage board, is made of all aluminum. The stage can be made of high-density stage board or organic glass, and various carpets can also be added to the stage. The advantages are: simple installation, fast transportation, convenient storage, and not taking up much space. It is suitable for some small indoor and wedding activities.

折叠过程效果



Wt006 -Hotel Folding Stage



Specifications	
Size	1220×2440mm
Material	Iron steel
Loading	1000kg/m ²
Panel Type	Plywood with carpet
Legs Type	Telescopic leg / Fixed height leg
Package Size	1240×1550×550mm
Use Range	Indoor

Specifications	
Size	1830×2440mm
Material	Iron steel
Loading	1000kg/m ²
Panel Type	Plywood with carpet
Legs Type	Telescopic leg / Fixed height leg
Package Size	1850×1930×550mm
Use Range	Indoor



WT006折叠铁舞台这款舞台常用于中小型会议，宴会及各种演出场合。框架采用铁质材料喷涂而成，结实安全，可折叠起来后又轮子可推动。极大的决绝了，因为是铁质材料造成重量的问题，舞台表面一般选用，地毯，显得非常高档，又大回滑，舞台有两种尺寸选择。可与舞台楼梯，舞台群及其他周边产品配合使用，可根据客户的要求，搭建成不同款式。尺寸：长2440*宽1830*高(410-610)mm，折叠起来它的尺寸为：宽1850*高1930mm*厚度550mm及1220*2440*(610-810)mm，折叠起来它的尺寸为：宽1240*高1550*厚度550mm。

The WT006 folding iron stage is commonly used in small and medium-sized meetings, banquets, and various performance occasions. The frame is sprayed with iron material, which is sturdy and safe. It can be folded up and pushed by wheels. This is a great solution, as the weight problem is caused by iron material. Generally, the stage surface is chosen as a carpet, which appears very high-end and has a large sliding back. The stage has two sizes to choose from. It can be used in conjunction with stage stairs, stage groups, and other peripheral products, and can be built into different styles according to customer requirements. Dimensions: length 2440 * width 1830 * height (410-610) mm. When folded, its dimensions are: width 1850 * height 1930mm * thickness 550mm and 1220 * 2440 * (610-810) mm. When folded, its dimensions are: width 1240 * height 1550 * thickness 550mm.





■ 规格型号: WT007雷亚架舞台

材质: 铝合金框架+18MM防滑舞台板
 大小: 1000*1000/1220*1220/1220*2440MM
 高度: 1000mm, 2000mm, 3000mm,
 平均载荷: 1300KG 最大载荷: 1500KG
 适合场合: 大型演唱会, 音乐节, 户外活动。

■ Model: WT007 Leia stage

Material: Aluminum alloy frame+
 18MM anti slip stage board
 Size: 1000 * 1000/1220 * 1220/1220 * 2440MM
 Height: 1000mm, 2000mm, 3000mm,
 Average load: 1300KG Maximum load: 1500KG
 Scenes: Large scale concerts, music festivals,
 outdoor activities.

基于雷亚架延伸设计, 快速锁扣和快速拼装机制安全组件, 承载高达1300公斤/平方米, 低剖面设计舞台表面顶层夹板可选择平稳性高强度。



Based on the extended design of the Raya frame, the safety components of the quick lock buckle and quick assembly mechanism can bear up to 1300 kg/square meter. The low profile design of the top layer of the stage surface clamp can choose high stability and strength.

The horizontal support rod can support two stage boards to share. It is made of aluminum alloy and iron structure, and it is lightweight. Dimensions of 1m and 2m.



水平托杆

水平托杆可支持两块舞台板共用。其由铝合金和铁质结构, 它的重量轻, 1m和2m的尺寸。

这款舞台是基于雷亚架的基础上延伸设计, 在原始设计上添加了水平托杆、护栏立柱、扶手和支柱。加上舞台板, 使其具有高承载能力和稳定性。这款舞台适应于大型演出, 舞台高度可达2m以上。可以根据客户的要求定制。

This stage is an extended design based on the Raya frame, adding horizontal support rods, guardrail pillars, handrails, and pillars to the original design. Adding a stage board gives it high load-bearing capacity and stability. This stage is suitable for large-scale performances, with a stage height of over 2 meters. Customization can be made according to customer requirements.



调节底座

高度: 180mm, 280mm
 重量: 1.32kg, 1.00kg

Adjusting the base
 Height: 180mm, 280mm
 Weight: 1.32kg,



WT008拉网式舞台-WT008 mesh stage

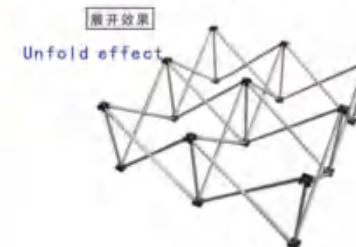
安装简单、运输方便、折叠存储节省空间等特点, 台面采用夹板包地毯面, 采用支架展开后多点支撑于台面, 单张舞台向进行连接固定
 适用各种演出:T台走秀。该产品外型美观、大方, 架体材质为优质钢管。
 舞台规格: 1x1m 1.22x1.22M
 1x2m 1.22x2.44m
 舞台高度: 0.2-0.8m
 舞台面: 地毯面 地板胶面 喷涂面

WT008拉网舞台优点有: 安装简单、方便、快捷、入库方便不占多少空间, 适用于一些小型的室内、婚庆活动、T台走秀等。

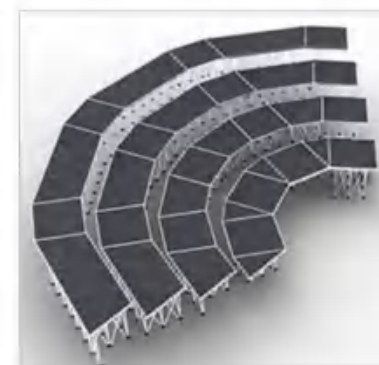
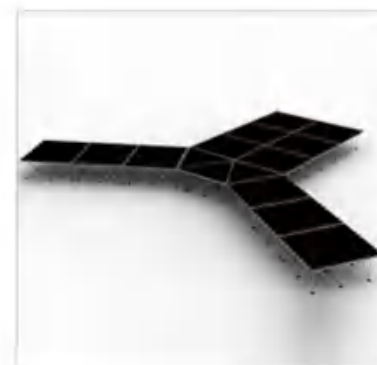
The features include simple installation, convenient transportation, and space saving when folding and storing. The tabletop is covered with plywood and carpeted surface, and is supported by multiple points on the tabletop after being unfolded with brackets. Connecting and fixing between individual stages

Suitable for various performances: runway shows. The product has a beautiful and generous appearance, and the frame material is high-quality steel pipe.

Stage specifications: 1x1m 1.22x1.22M
 1x2m 1.22x2.44m
 Stage height: 0.2-0.8m

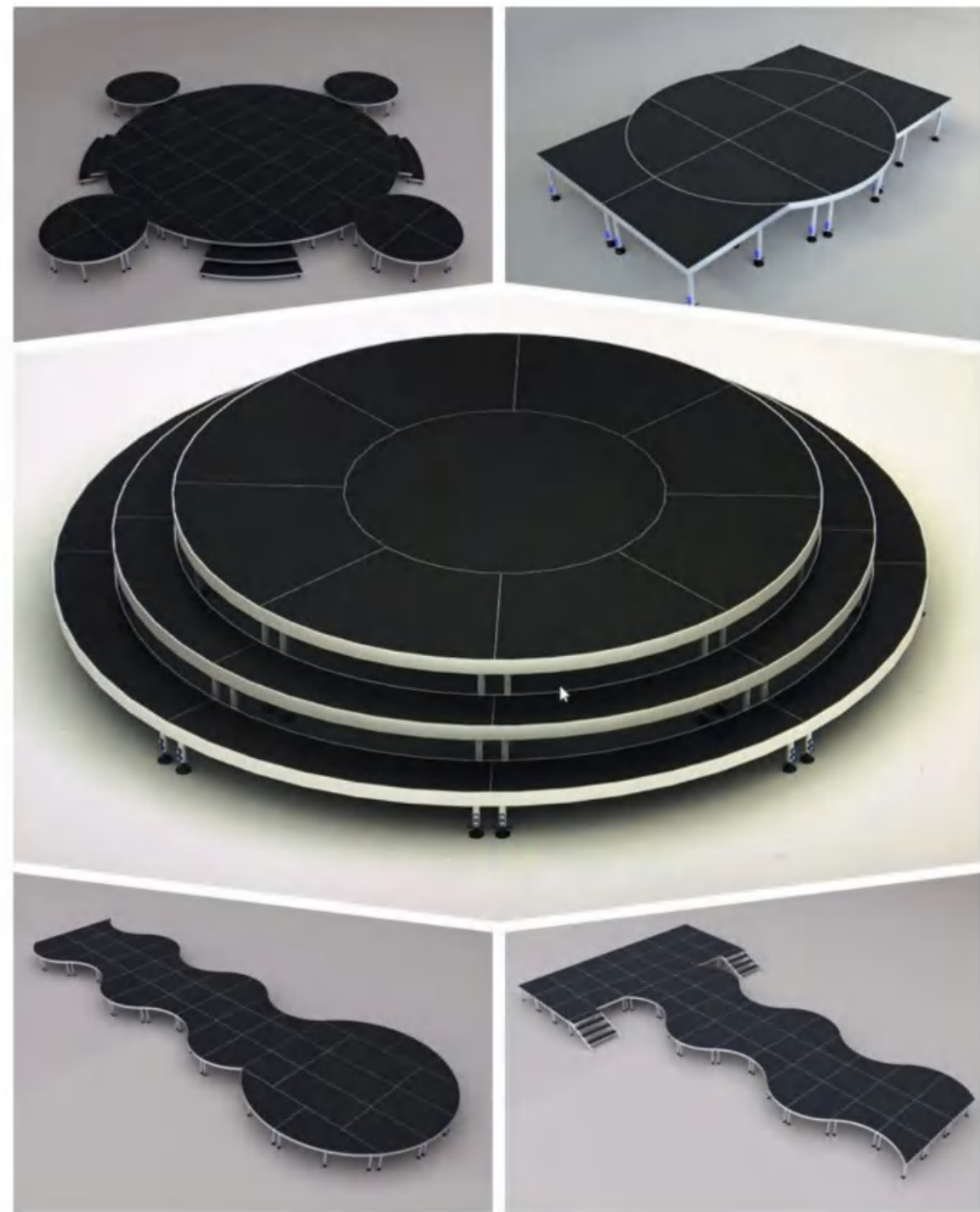


Folding effect



> 定制异形舞台.Custom Made Abnormal Stage

Customization of various shapes



> 合唱台 合影台.Square Bolt Truss



■ 规格型号 : WT009 合唱台

材 质 : 6082铝合金+18mm专业舞台防滑木板
 台面规格 : 1.2*0.4m
 高度调节 : 0.3m/级

台面层数可根据要求定制

安装方式 : 折叠式快速安装

每层受力 : 300kg /级

■ Model No.: WT009 Square Bolt Truss

Material: 6082 Alloy+18mm Stage Panel

Height: 0.4-0.6, 0.6-1m custom made

Stand: Dia. 50x3mm

Mount: Fast Folding style

Shipping Method: Transport Trolley

Stage Load: 300kgs/sqm



> 活动看台-movable stand



产品名称:带座位看台

尺寸:1-5行 定制

单位长度:1.5-4.5m

护栏:带3排、4排和5排护栏

车轮:带或不带车轮

应用范围:学校、教堂、体育馆、礼堂、多功能会议厅、展览馆

Product Name: Bleachers with seats

Rows: 1- 5 rows, customized

Unit length: 1.5-4.5m

Guardrail: With guardrail for 3, 4 and 5 rows

Wheels: With or without wheels

Application: School, Church, Stadium hall, Gymnasium, Auditorium, Multi-functional conference hall, Exhibition hall

全铝合金看台

适合学校, 教堂, 体育馆



All aluminum alloy stands

Suitable for schools, churches, and sports venues

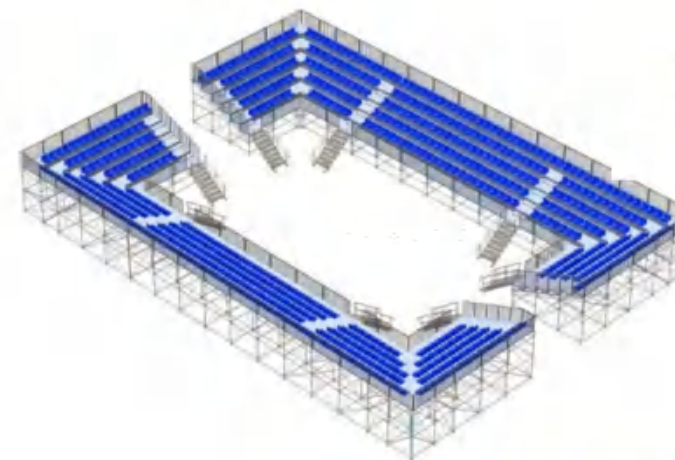
带屋顶看台, 固定式看台

适用于操场 工业园区



Rooftop stand, fixed stand

Suitable for playground industrial parks



雷亚架看台

适用于大型体育馆, 球场

Raya Stand

Suitable for large sports venues and stadiums